



Ilais ffermwyr Cymru

YTIR

the voice of Welsh farming

£2.50



“The cattle may have to go” - harsh reality of NVZ regulations

page 4



Datblygu busnes yng nghefn gwlad - stori Betsan

tudalen 6



What's been happening in your county

pages 18 & 19

Committed to fighting for our family farms

by Glyn Roberts, FUW President

AS *Y Tir* goes to print this month we still don't know who will form the next Welsh Government. Whilst all fingers point to a coalition Government in Cardiff, whoever picks up the baton will be facing many challenges; new ones and old ones. Over the past month we have lobbied all parties on the key asks of our Welsh Senedd Election Manifesto, and the issue of water pollution and the new regulations were hotly debated in hustings up and down the country. There won't be a Senedd Member who doesn't understand how we and our members feel about the issue.

The need to address water pollution has been a significant priority for the FUW for decades, as evidenced by the FUW's work with bodies such as the now disbanded Environment Agency over the years. However, the draconian regulations before us today will not solve the problem, despite the Welsh Government claiming that a voluntary approach had failed to achieve the desired outcome and using it as a justification for the current regulations before us all.

We are therefore quite clear - the next Welsh Government must withdraw the Water Resources (Control of Agricultural Pollution) (Wales) Regulations, consider the WLMF Subgroup report on tackling agricultural pollution and work with the organisations represented on the group to find a targeted solution tailored to Wales.

Watching the recent Panorama documentary, which revealed how utility companies are discharging sewage into our rivers, came as no surprise to us. Whilst farmers have been a convenient scapegoat for river pollution, others, like the water sector, have escaped under the radar compared to the media attention heaped on the agriculture sector.

The irony is that had the Welsh Government implemented the 45 recommendations put together by stakeholders that included the FUW and Dŵr Cymru, we would have been well on the way to better targeting and tackling all Welsh pollution incidents, instead of which they chose to sit on their hands for almost three years then introduce draconian NVZ regulations that will make matters worse and have devastating impacts for Welsh farm businesses.

To address the current regulations and accurately outline how and why they're going to achieve the exact opposite of what is intended, the FUW has established a NVZ working group. The group will go through the



findings of our NVZ working group to the Welsh Government.

However, we must not lose sight of the bigger picture: No matter how big the NVZ issue is for our industry, we are also fighting proposed changes to agricultural policies, as set out in the Welsh Government's white paper, that will impact on every aspect of farming for the next twenty years or more.

With England basically following the same path as Wales (but a few steps ahead) English farmers and organisations are finally waking up to the impacts and dangers of cuts to the English basic payment, which start in England this year, with the Foundation for Common Land recently expressing its disappointment at the Prime Minister's response to a letter in which they warned of an 'impending car crash' which will leave 14,000 English farms at risk of being loss making or earning less than half the national minimum wage by 2024.

Even the English Labour party has said that the phasing out of direct farm payments could lead to thousands of agricultural jobs being lost and family farms pushed to the brink of closure - and has launched a year-long review of its rural policies.

Ironically, Welsh Labour don't seem to agree, and has been simply following the same path as the UK Government, with the similarity and links between Wales and England not lost on the Irish industry: Writing on the Irish Agriland website, agricultural chemist and former chair of the Northern Ireland Institute of Agricultural Science Richard Halleron said recently that: "UK government's decision to phase out the single payment support mechanism for livestock farmers in England and Wales opens up a door of opportunity for Irish beef producers."

He also stated that: "Irish...record lamb and hogget prices...is a trend that is very likely to gain further momentum during the period ahead. At the heart of the issue is the Brexit deal struck by Britain, which now sees British sheep producers totally hampered by enhanced red tape and product inspections, when it comes to them

regulations and highlight its shortcomings and contradictions to the Welsh Government in detail with the aim of seeing the current regulations amended accordingly, if not annulled.

I therefore want to reassure members that the fight over the NVZ regulations is not over. We will do everything we can to combat these regulations and our next step is to outline the detailed

servicing the French and EU markets. All these administrative obstacles are adding to their costs...France still needs lamb with the result that Irish lamb producers will benefit accordingly now and into the future."

With Welsh lamb prices still extremely buoyant, we can only hope that this analysis is wrong, but our role as a Union is to see well beyond last week's market prices or promises of a bright future made by our politicians, and whether its NVZs, trade deals or cuts to payments, the FUW is committed to fighting for our family farms.

With Labour likely to be in power in Wales in some form or other for the coming five years, let us hope that they are listening to the warnings of their colleagues over the border in England, not to mention our Irish competitors.


Mae'r golofn yma yn Gymraeg ar wefan yr FUW - Newyddion - Newyddion Y Tir: "Ymrwymo i ymladd dros ein ffermydd teuluol."

Shearwell Data


Livestock Systems

Working to help the livestock farmer


The future of high welfare, high throughput tagging



“Mae'r Turbo Tagger yn gwneud hi'n waith ar gyfer un person. Mae'n un or pethau gorau sydd wedi digwydd i tagio”



SET TAGS are supplied in 'drums' of 20 tags



Prices exclude VAT and delivery

North Wales dani.hughes@shearwell.co.uk 07494 499096
 South Wales lisa.jones@shearwell.co.uk 07837 988977
 Call 01643 841611 www.shearwell.co.uk Ad code YTIR

FUW UPDATE

Proud to be re-vitalising the rural economy in Wales

by Guto Bebb, FUW Group Managing Director

IT feels somewhat odd to be writing an article in the midst of a campaign for the Senedd elections knowing that by the time it appears the election will be over apart from the horse trading that might be required if the electorate decide to offer no party an overall majority.

I will therefore refrain from commenting on political developments apart from stating that I have been pleased with the number of hustings arranged by the Union. Turnout at these events has been good and that is pleasing. It underlines the fact that as a sector, more than most perhaps, we are very aware of the ability of the Senedd to impact our daily lives.

Our policy team excelled themselves with our detailed and pragmatic Manifesto for 2021 and we also ran an innovative marketing campaign to ensure that our key demands were communicated to aspiring politicians and the media.

Since 1999 the FUW has understood the potential of devolution to better serve our needs as a sector and it is therefore concerning to feel the sense of disappointment felt by many members who feel that, despite the odd exception, so much more could have been done by successive Welsh Governments to support and develop farming in Wales.

It's a message that I hope will have resonated with the candidates who took part in our hustings and I hope that we will see evidence from the next Welsh Government, regardless of its composition, that it's now time to deliver for this key sector of the Welsh economy.

Talking of delivering for the rural Welsh economy, I am pleased to be

able to write in this column about both my work with the Union and the activities of FUWIS. When the FUW was established back in 1955 one of the earliest decisions made was to form an insurance arm to both service the needs and demands of members and to act as a source of funding for the Union.

As Group MD one of the key responsibilities that I have is to ensure that we build on the success story of the past decade from a FUWIS perspective but doing so whilst re-stating the relationship between Union members and FUWIS.

It should be a source of pride to all of us that the FUW has practiced what it preaches when it comes to our demands to re-vitalise the rural economy here in Wales. The fact that FUWIS employs almost 80 members of staff in thirteen offices across rural Wales is a significant achievement. We are, by the very creation of FUWIS, highlighting the fact that supporting Welsh agriculture is about more than supporting any individual farm. It's actually about supporting a rural economy which is interdependent where the success of farming contributes to the success of local traders, merchants, and of course, insurance brokers!

Regardless of who will have responsibility for supporting Welsh agriculture and developing our rural economy after the Senedd elections on May 6, they could do worse than seeking our advice as an organisation. Not only do we speak for Welsh farmers but by our actions in creating and sustaining a business of the size of FUWIS we have shown one of our key messages to be true. A strong agricultural sector will contribute to and sustain a strong rural economy.



Key Welsh agriculture white paper proposals rejected

THE FUW has rejected the key proposals for the future of agricultural support in Wales set out in the Welsh Government's agriculture white paper, and called for a genuine Welsh policy to be developed to meet Welsh objectives.

The Agriculture (Wales) White Paper sets out Welsh Government policy proposals for a legislative framework governing Welsh agriculture, as well as forestry and woodlands, over the coming decades.

Central to the proposals would be moves to ratchet up rules and restrictions, and base farm support payments purely on the delivery of 'public goods' - an academic term that in most cases means environmental benefits such as clean air, water quality, and wildlife habitat.

"We of course agree that public goods should be an important part of a future rural support scheme, but delivering employment, economic, social and cultural prosperity should also be fundamental principles that underpin the design of future support mechanisms," said FUW President Glyn Roberts.

"We have a proud history of designing agricultural policy for Wales and have previously deviated significantly from English policies - much to our benefit - and we should continue to do so.

"Scotland and Northern Ireland are making the most of their devolved powers and forging ahead with plans to use multiple tools to deliver what is needed for their own agriculture and rural communities," he said.

Wales should therefore abandon the 'cut-and-paste-from-Defra' mentality and design a scheme aimed specifically at delivering not only environmental outcomes, but also the prosperity, jobs, language, culture and other targets inherent to the Wellbeing of Future Generations (Wales) Act 2015, and other Welsh objectives, said Mr Roberts.

Wales currently applies a cap on farm payments and the 'redistributive payment' approach in order to increase support for smaller family farms.

"Much more will need to be done by the next Welsh Government to engage with the industry and alleviate the concerns expressed in our response to this consultation."

"It is shocking that no mention of capping payments or focussing support on family farms is made in the white paper given the current progressive approach adopted in Wales, and the dangers inherent to the one-dimensional public goods approach," said Mr Roberts.

Those dangers include the creation of a postcode lottery, where different farmers are subject to different rules, priorities and payment rates - creating significant market distortion and inequity - and the possible movement of money away from smaller family farms to large landowners and landowning charities, says the Union.

"By comparison, the Welsh farming industry's alternative proposals would encompass environmental, social, cultural and economic priorities in a balanced and fair way," he added.

Mr Roberts said that minimal changes to the Public Goods proposals set out in the Brexit and our Land and Sustainable Farming and our Land consultations in 2018 and 2019 has also led members to question if they are being ignored by the Welsh Government, despite thousands of responses from farmers opposing the public goods proposals.

"Our members are going to be directly affected by any changes to Wales' agricultural policies and support schemes and they were frustrated that points raised by them and farming organisations in response to previous consultations

had been ignored by the current Welsh Government," he said.

"Whilst we welcome the narrative around the importance of sustainable food production, the delivery mechanisms proposed here do not reflect this. They are based purely on environmental goods, without a recognition of the supply of safe, traceable food produced to high standards and the central role of our family farms in doing this.

"What became evident when we spoke to our members was that many are of the view that the environmental outcomes desired by Welsh Government generally resulted in 'doing or farming less'. This, of course, causes concern for the wider rural economy who benefit greatly from farmers' local expenditure and activity, as well as for species which rely on agriculture and land management to thrive," added the Union President.

The Union was also clear that the current RPW Online system and the submission of annual and detailed (down to 0.01ha resolution) land use data should be maintained and developed as a central feature of a future scheme.

The FUW therefore opposed any plans to design a brand new data collection system or the replacement of the current programme with tens of thousands of complex bespoke public goods contracts requiring advisers, personalised reviews and Glastir type mapping.

Furthermore, members feared that optimistic targets for tree-planting could lead to large-scale blanket plantations - to the detriment of rural communities, biodiverse landscapes, and agricultural productivity, whilst diverting agricultural budgets to other sectors and potentially landlords from outside Wales.

"In order to ensure farmers are active participants in the biggest agricultural reform in Wales for more than half a century, much more will need to be done by the next Welsh Government to engage with the industry and alleviate the concerns expressed in our response to this consultation," added Mr Roberts.

If we have published anything that is factually inaccurate, please contact the editor on 01970 820820 at ytir@fuw.org.uk or at FUW, Llys Amaeth, Plas Gogerddan, Aberystwyth, Ceredigion, SY23 3BT and once verified we will correct it here as soon as possible.

South Wales Evening Post is part of Trinity Mirror North West & North Wales Ltd, a subsidiary company of Reach PLC, which is a member of IPSO, the Independent Press Standards Organisation. We adhere to the Editors' Code Of Practice as enforced by IPSO, who are contactable for advice at Independent Press Standards Organisation, Gate House, 1 Farringdon Street, London, EC4M 7LG. Website: <http://www.ipso.co.uk> Telephone: 0300 123 2220; email advice@ipso.co.uk

If you have a complaint concerning a potential breach of the Code of Practice, we will deal with your complaint directly or IPSO can refer your complaint to us. Please go to <https://www.reachplc.com/how-to-complain> where you can view our Complaints Policy and Procedure. A "How To Complain" pack is also available by writing to the Legal and Compliance Department, Reach PLC, One Canada Square, Canary Wharf, London, E14 5AP.

Sut i gysylltu gyda Y Tir / How to contact Y Tir

Golygydd/Editor: Nia Davies-Jones - ytir@fuw.org.uk

Golygydd y Gymraeg/Welsh Editor: Angharad Evans - angharad.evans@fuw.org.uk

Swyddog y Wasg UAC/FUW Press Officer: Anne Dunn - anne.dunn@fuw.org.uk

www.fuw.org.uk



Annog Llywodraeth nesaf Cymru i ddatblygu polisiau sy'n benodol i ac wedi'u llunio i Gymru



BUM mlynedd yn ôl, cyn etholiadau Senedd Cymru 2016, rhybuddiodd Undeb Amaethwyr Cymru am yr heriau digynsail oedd yn wynebu Aelodau newydd y Senedd a'r Llywodraeth. Ers hynny mae'r heriau hynny, nid yn unig wedi dod yn realiti ond wedi gwaethygu ac ychwanegu atynt.

Gan amlinellu'r materion mawr sy'n wynebu amaethyddiaeth yng Nghymru mewn cynhadledd i'r wasg, a lansiodd Maniffesto Etholiad Senedd Cymru 2021 UAC, dywedodd Llywydd UAC, Glyn Roberts: "Mae'n amlwg bellach bod ffurf llawer caletach o Brexit nag a addawyd gan y rhai a fu'n lobio dros ein hymadawiad o'r UE wedi cyfyngu mynediad i'n prif farchnadoedd allforio ar y cyfandir.

"Ar yr un pryd, mae pandemig parhaus Covid-19 wedi newid ein bywydau y tu hwnt i'r hyn sy'n gyfarwydd ac yn amlygu pa mor fregus yw'r cadwyni cyflenwi bwyd byd eang a phwysigrwydd cael sector ffermio cryf y gall ein marchnadoedd domestig ddibynnu arno am nwyddau.

"Er bod materion o'r fath wedi bod y tu hwnt i reolaeth ein gweinyddiaethau datganoledig i

raddau helaeth, mae ymateb Llywodraeth Cymru i'r ansicrwydd a'r heriau sy'n wynebu ein sector amaeth wedi bod yn ddrylyd ac yn wrthgyferbyniol ar adegau, a hynny'n bennaf oherwydd yr awch i gynyddu costau a chyfyngiadau yn sylweddol wrth gynnig diwygiadau amhroffedig o bolisiau cymorth gwledig."

Yn y cyfamser, mae toriadau Llywodraeth y DU i gyllid gwledig Cymru - mewn gwrthgyferbyniad uniongyrchol ag addewidion a wnaed dro ar ôl tro gan y rhai a oedd o blaid Brexit - wedi ychwanegu at y pwysau ar amaethyddiaeth Cymru, yr economi wledig a Llywodraeth Cymru, meddai Llywydd yr Undeb.

Trwy ei maniffesto a'i gwaith lobio parhaus, mae UAC yn parhau i fod yn glir bod ffermydd teuluol Cymru wrth wraidd ein heconomi wledig, ein diwylliant a'n tirwedd, yn cefnogi cannoedd ar filoedd o swyddi a degau o fusnesau sy'n ymwneud â diwydiant cyflenwi bwyd Cymru, ac yn cyfrannu'n helaeth at les trigolion Cymru a'r DU - ac un o'r buddion canolog hynny yw cynhyrchu bwyd, ein nwydd mwyaf gwerthfawr ochr yn ochr â dŵr.

"Wrth symud ymlaen mae angen polisiau arnom sy'n adlewyrchu'r angen i liniaru newid yn yr hinsawdd a gwarchod ein hamgylchedd, ond rhaid i ddyheadau o'r fath gael eu hatgyfnerthu gan y wybodaeth y bydd newidiadau ysgubol sy'n tansellio ein ffermydd teuluol a chynhyrchu bwyd yn symud cynhyrchu i wledydd sydd â safonau lles anifeiliaid is ac olion traed byd-eang ac amgylcheddol uwch," meddai Glyn Roberts.

Gan dynnu sylw at siom aelodau dros y blynyddoedd gyda Llywodraeth bresennol Cymru, ychwanegodd Mr Roberts, yn hytrach na theimlo bod pryderon y diwydiant wedi cael eu hystyried a gweld mesurau cymesur yn cael eu gweithredu i ddiogelu'r diwydiant amaethyddol, mae llawer yn ystyried yr arweinyddiaeth bresennol fel bradychiad o ddatganiol sy'n bygwth yn uniongyrchol y diwydiant amaeth, y diwylliant, yr iaith a'r ffordd o fyw sy'n rhan gynhenid a hanfodol o gynhyrchu bwyd yng Nghymru.

Wrth siarad o'i fferm yng Ngogledd Cymru, ychwanegodd: "Gyda hyn mewn golwg, nid wyf yn ymddiheuro am dynnu sylw at rwystredigaeth ein haelodau am ddiffyg polisiau pwrpasol i Gymru ynglŷn â chynigion cynllun ffermio yn y dyfodol a mynd i'r afael â materion ansawdd dŵr a gyflwynwyd gan Lywodraeth bresennol Cymru, a'r teimlad amlwg bod y rhai sy'n ein llywodraethu o Fae Caerdydd ymhellach o'n cymunedau gwledig nag erioed.

"Mae ffermwyr Cymru yn falch eu bod yn cynhyrchu bwyd o'r radd flaenaf i safonau amgylcheddol, iechyd a lles anifeiliaid, a diogelwch bwyd heb ei ail, ond mae angen rheoleiddio'r safonau hyn mewn modd cymesur sydd ddim yn rhwystro arloesedd, yn creu cyfyngiadau diamod, ac yn rhoi ffermwyr Cymru o dan anfantais gystadleuol ddifrifol yn erbyn cynnyrch amaethyddol gwledydd eraill."

Mae pryderon o'r fath yn arbennig o berthnasol mewn cyfnod pan mae Llywodraeth y DU yn mynd ati i geisio llofnodi cytundebau masnach gyda gwledydd sydd â safonau cynhyrchu

Am gyfnod Senedd nesaf Cymru a thu hwnt, mae UAC wedi ymrwmo i lobio pawb yng Nghaerdydd i sicrhau bod amaethyddiaeth a ffermydd teuluol yn cael y sylw a'r parch y maent yn eu haeddu - er mwyn dyfodol pawb.

sy'n llawer is na'r rhai sydd eisoes yn ofynnol gan gynhyrchwyr bwyd o Gymru, ac er bod y dyhead i godi safonau ymhellach i roi mantais gystadleuol i'n cynhyrchwyr mewn marchnadoedd drutach yn ddealladwy, mae hefyd yn naif o ystyried yr hyn y mae'r data'n ei ddweud wrthym am ddifaterwch eang cwsmeriaid tuag at safonau o'r fath yma ac o amgylch y byd.

"Ochr yn ochr â materion blaenoriaethau allweddol eraill a amlinellir yn y maniffesto hwn, mae UAC yn annog Llywodraeth a Senedd nesaf Cymru i ddatblygu polisiau sy'n benodol i ac wedi'u llunio i Gymru sy'n adlewyrchiad o'r sefyllfa ar draws y byd yn ogystal ag anghenion economaidd, cymdeithasol ac amgylcheddol Cymru a saith nod llesiant Cymru; polisiau sy'n cynnal ein safonau sydd eisoes yn uchel wrth sicrhau nad yw cynhyrchwyr Cymru yn cael eu tansellio mewn ffyrdd sy'n arwain at fewnforio mwy o fwyd gan y rhai sydd â safonau llawer is na'n rhai ni," meddai Llywydd yr Undeb.

Am gyfnod Senedd nesaf Cymru a thu hwnt, mae UAC wedi ymrwmo i lobio pawb yng Nghaerdydd i sicrhau bod amaethyddiaeth a ffermydd teuluol yn cael y sylw a'r parch y maent yn eu haeddu - er mwyn dyfodol pawb.

Mae copi o Fanniffesto Etholiad Senedd Cymru 2021 UAC ar gael yn www.fuw.org.uk/cy/polisi/adroddiadau

This article is in English on the FUW website - News: "FUW urges the incoming Welsh Government to develop bespoke, tailor-made policies that reflect global realities as well as Welsh economic, social and environmental needs."



<p>Valtra T203D, Approx hours 4400. Brilliant Condition.</p>	<p>Manitou MT625H Telehandler, 1507 Hours Approx, Year of Manufacture 2018. Excellent Condition, like new.</p>	<p>Valtra T160 Twin Track with Kesla 400 Crane, Reverse Drive, Hours Approx 1546. Year 2005. Great Condition.</p>
<p>Valtra N154 Active with front loader, good condition, approx hours 620.</p>	<p>Hi-Spec Slurry Tanker, 2500 gallon capacity, Sprung Draw Bar.</p>	<p>Valtra N154 with loader, Approx 765 hours. Great Condition</p>
<p>Massey Ferguson 5465 Dyna 4, Hours approx 5709, New Tyres.</p>	<p>TMK Tree Shears In Stock.</p>	<p>Claas 450 Arion. 641 hours approx. 3 spools, passenger seat.</p>

Phone: 01559 384886 Fax: 01559 384814 Email: sales@jdsmechanery.co.uk

“We’ll have to get rid of our cattle” - response to draconian NVZ regulations

GLAMORGAN beef and sheep farmers Richard Walker and his partner Rachel Edwards, (pictured right), run Flaxland Farm - a 120 acre beef and sheep holding just outside of Barry, Glamorgan. The couple say they will have to give up keeping cattle if current Water Resources (Control of Agricultural Pollution) (Wales) Regulations are not adjusted to incorporate recommendations made by industry stakeholder groups.

Richard and Rachel keep 35 breeding cows and 130 breeding ewes and are at the end of their tether.

“We’ve had a session with Farming Connect to see what we need to be doing, and it didn’t really tell us anything we didn’t already know, apart from that we have enough ground to cope with how much slurry we produce. So we wouldn’t have to export. But we would have to cover one of the existing yards, which is an awkward shape, plus cover where we scrape slurry to, and also put in a slurry store. Which we don’t have at the moment,” said Rachel Edwards.

“Judging on what the shed we had to put up recently has cost us, I don’t think we’ll have any change out of £50 thousand if we try to meet the requirements of the new regulations. 35 cows don’t bring in that sort of money. Where do you get that money from? And you still need to pay it back at the end if it’s borrowed. We’re looking at the kids probably still paying off what we’d spend. It would be far more stressful having to pay all that money back than getting rid of the cows.

“These regulations are going to have a huge impact on our farm business. If nothing is done to amend or annul what we are facing now, I’ll have no choice but to get rid of the cattle. Trying to comply with these regulations is just going to be too expensive for us,” said Richard Walker.

Cabinet Secretary for Energy, Planning and Rural Affairs Lesley Griffiths announced the plans in a written statement in November last year, after which it became apparent that the majority of the plans had simply ‘been cut-and-pasted’ from the Nitrate Vulnerable Zone (NVZ) rules currently affecting just 2.4% of Wales.

While the Welsh Government announced in January that £11.5 million funding would be made available to help farmers comply with the new rules - an allocation it had already announced previously in September 2020 - this represents just 3% of the £360 million the Welsh Government’s own impact assessment estimates the costs could be for Welsh farmers.

“There’s clearly nowhere near enough money to go around, and the total estimated bill is more than Wales’ annual farming budget.

“The margins are tight on lowland sucklers as it is. We’re looking at spending tens of thousands of pounds to comply. Is it really worth it?” adds Richard.

At Flaxland farm the muck gets spread on around 30 acres of fields in September when the fields are clear and it is left for a couple of months to rot down and go into the ground before being used as grazing for the new season lambs.

“It saves us using artificial fertiliser. It’s organic fertilizer versus the artificial stuff which is



£300 a tonne. We spread the slurry over winter, it helps the grass grow and we can turn the lambs and sheep out early. The spring lambs have fresh good grass and it hasn’t cost us a fortune in bagged fertiliser.

“I look at what it does to my ground - new season lambs have lush green grass, a couple of inches tall and they rocket on it. We can produce 12 week old lambs ready for slaughter on grass and milk with no concentrate. Without it, the grass wouldn’t be as beneficial to the new season lambs as it is now. There would be a shortage of grass around February and March. The way we do things here works in rhythm with all the livestock and the environment. We also deal with the carbon footprint of our produce by selling our lambs locally to I.G. Nicholas butchers in Cowbridge, which means they have very few miles to travel from farm to plate,” said Richard.

Being the third generation to farm the land, Richard says the farming system hasn’t changed much over the years and pollution

here has never been an issue.

“I have had the cows all my life, my grandfather used to milk and they gave up milking in the 60s, and then we have had suckler cows ever since. The way we keep them hasn’t changed, back then it was open yards and they were fed on a concrete pad and whatever was left was scraped up and went out. It has never been an issue and we’ve never had a pollution incident here. The river near us has been tested many times and never comes back with any problems.

“I, like so many other farmers, take our responsibility to look after the environment, including our waters, very seriously. We have always been clear that one pollution incident is one too many and those who are guilty of polluting our rivers and watercourse should be held to account. Not many will argue with that. But to introduce these regulations across the whole of Wales, which goes against the recommendations the Welsh Government has received from their own task and finish group beggars belief, and will see many small and medium sized family farms go out of the cattle business,” he said.



“These regulations are going to have a huge impact on our farm business. If nothing is done to amend or annul what we are facing now, I’ll have no choice but to get rid of the cattle. Trying to comply with these regulations is just going to be too expensive for us.”

CLWYD AGRI – MAIN DEALERS FOR NORTH WALES

NUGENT TRAILERS

GREAT SELECTION
IN STOCK



WE ARE NOW
STIHL[®]
MAIN DEALERS

GALWCH
PRYDERI,
GEORGE NEU
CLWYD AM FWY
O FANYLION
01745
571018



**SERVICE
PARTS
REPAIRS**

A GREAT
SELECTION
OF USED
UTV/ATV'S &
MACHINERY
IN STOCK



THERE HAS NEVER BEEN A
BETTER TIME TO BUY A NEW
SAME OR LAMBORGHINI!

■ MACHINES IN STOCK ■ 4x44 0% FINANCE*
■ 6x66 1% FINANCE*



CLWYDAGRI.CO.UK TERFYN BUILDINGS, CAERWYS RD, CWM, DYSERTH, LL18 6HT 01745 571018

*TERMS AND CONDITIONS APPLY

Free Sales Service for FUW Members

If you have anything to sell - big or small - fill in the coupon and for a FREE ADVERTISEMENT send it to:

Y Tir, Plas Gogerddan, Aberystwyth, SY23 3BT
or email it to: ytir@fuw.org.uk

Entries must be confined to 25 words and be received by:
May 24 2021

FOR SALE	WANTED	LIVESTOCK FOR SALE
HOLIDAYS	FARMS FOR SALE	MISCELLANEOUS
Name		
Address		
Telephone number		
<p>PLEASE NOTE: FREE ADVERTISEMENTS ARE FOR FUW MEMBERS ONLY AND NOT FOR COMMERCIAL TRADERS</p>		
Membership number:		

FOR SALE

SOLIS 75 TRACTOR; 350 hours only. Excellent condition, 2019 plate. Call for more information. Tel: 07773 444115. Near Newcastle Emlyn.
M.F HYDRAULIC ZIG ZAG HARROW; Ferguson cutting bar in good condition. Tel: 07716 029064.
NEW HOLLAND 4 WHEEL TRACTOR TL90A; excellent condition, serviced every year. Tel: 01938 810445.
GYPSUM; The universal soil conditioner. Cost effective source of calcium sulphur for plant nutrition. Contains around 32% calcium (CaO) and 43% sulphur (So3). Reduces high magnesium content. Tel: 01691

777785 / 07802 680687.
QUICKE MUCK GRAB; no. 3 bolt on brackets, can be altered to Euro 8 - £400 + VAT. 4 standard Fordson magnetos - £200. Tel: 01982 560606 (evenings).
WELSH PONY & COB SOCIETY JOURNALS; 2 books 1959 to 1960. 4 books 1967 to 1971. 1 book 2001 special centenary edition. 15 books 2007 to 2021. Reasonable offers acceptable. Tel: 01873 830575.
DAVID THOMAS ELECTRIC HAY ELEVATOR; good working order. Browns yard scraper, very little use, good working order. Viccon spinner MK 11, tidy for age. Tel: 01654 702872.
FORDSON MAJOR

TRACTOR; good condition, new back tyres. International B46 baler. Roche ferti spreader. Zig zag harrow. Tel: 01348 881212 / 07779 921934.

LAND AVAILABLE

GRAZING TACK LAND AVAILABLE; for 200 store or ewe lambs from 1st October 2021 - 31st March 2022. Near Newcastle Emlyn. Tel: 07773 444115.

WANTED

RELIABLE HANDYMAN FOR FARM AND GARDEN MAINTENANCE; 1 day/week. Experienced with quadbike, power tools, dogs, ideally sheep. Clean driving licence. Tel: 01267 290268, Fellingwm, Carmarthen.

To advertise in the Sales Section of the Y Tir and reach a monthly audience of over 20,000 adults throughout Wales

Contact

**Rhian Jones on
07846 821336**

or email

rhian.jones@reachplc.com

CORNEL CLECS

Stori ysbrydoledig Betsan

gan Angharad Evans, Golygydd y Gymraeg

MAE'R flwyddyn ddiwethaf wedi bod yn un anodd a heriol i ni gyd. Rydym wedi gorfod addasu'n ffordd o fyw, mae'r blaenoriaethau wedi newid, a phawb yn gwerthfawrogi'r pethau bach, a oedd o bosib, yn cael eu cymryd yn ganiataol cyn Covid.

Ond mae un ferch ifanc wedi addasu ac wedi mynd ati i helpu eraill drwy'r cyfnod clo. Mae teulu Betsan Jane Hughes, sy'n aelodau o'r Undeb yng Ngheredigion yn ffermio gerllaw pentref Langwryfon, a datblygodd diddordeb Betsan mewn gwnio i sefydlu busnes ar y fferm gartref wrth lethrau'r Mynydd Bach yn edrych allan ar y melinau gwynt.

Mae Betsan yn cyfaddef bod adre'n bwysig iawn iddi, ac yn rhoi'r cyfle iddi fedru cyfuno'r ddau beth sy'n agos at ei chalon sef gwnio ac amaethyddiaeth. Yn ystod ei hamser yn y coleg, cafodd Betsan gryn lwyddiant yn dylunio ar gyfer nifer o gwmnïau adnabyddus, ond erbyn hyn adre sy'n cynnig yr ysbrydoliaeth fwyaf iddi.

Ar ôl prysurdeb y tymor wyna, cafodd *Cornel Clecs* gyfle i gael sgwrs gyda Betsan am bopeth o'r gwnio i'r ffermio, a'r hyn sy'n ysbrydoli ei gwaith creadigol. Dyma Betsan i egluro mwy i ni:

Fy enw i yw Betsan Jane ac o ddydd i ddydd dwi'n rhedeg busnes dylunio ac adnewyddu dillad sef *Betsan Jane design & alterations*. Sefydles i fy musnes nôl yn 2017 ar ôl graddio o Ysgol Gelf Caerfyrddin wrth wneud gradd mewn 'Fashion: Design & Construction'. Yn ystod fy mlwyddyn ddiwethaf yn y Brifysgol bues i yn ffodus o ennill ysgoloriaeth er cof am Miriam Briddon, gwnaeth hyn fy ysbrydoli i ddechrau busnes fy hunan.

Dwi wrth fy modd yn helpu allan ar y fferm gyda Dad a Gethin, fy mrawd. Yng nghanol y prysurdeb wyna, godro a'r gwartheg ydw i hapusaf. Oedd yn bwysig iawn i mi fy mod i'n medru sefydlu busnes gwnio ar y fferm yn ogystal â helpu allan ar y fferm cymaint ag y gallaf - dwi mor ddiolchgar i Dad, Mam, a Gethin am bob cefnogaeth yn ystod y cyfnod yma.

Erbyn hyn mae'r busnes wedi tyfu tipyn, mae gen i ddau weithdy. Un ar y fferm deuluol yn Llangwryfon a'r ail yn Bow Street unwaith yr wythnos.

Mae'r cyfnod yma wedi bod yn heriol dros ben gan fod y busnes wedi gorfod cau dros nos yn ystod y cyfnodau clo a'r gwaith yn lleihau gan fod nifer o ddigwyddiadau wedi'u gohirio. Yn ystod y cyfnod clo cyntaf nôl ym mis Mawrth llynedd es i ati i sefydlu label dillad 'Beti Bwt'.

Ges i syniad nôl ym mis Ionawr i greu casgliad o siwmperi â'r bwriad oedd codi arian at dair elusen sef DPJ Foundation, Tir Dewi a CFFI Ceredigion. Gan fod nifer o elusennau yn colli allan yn ystod y cyfnod yma gyda nifer o ddigwyddiadau codi arian wedi cael eu gohirio, ro'n i'n meddwl y bydden i'n medru eu helpu nhw mewn ffordd greadigol gyda'r gobaith o godi ymwybyddiaeth ynglŷn ag iechyd meddwl yn y gymuned amaethyddol. Y rheswm arall dros ddewis yr elusennau yma yw fy mod i yn



dioddef gydag iechyd meddwl fy hunan, ac mae sefydliadau fel yr CFFI wedi fy helpu i yn bersonol i ddo trwy sawl cyfnod anodd. Yn ogystal â'r CFFI, mae DPJ Foundation a Tir Dewi yn gwneud gwaith arbennig yn y gymuned amaethyddol wrth godi ymwybyddiaeth am iechyd meddwl ac yn

cynnig cymorth i ffermwyr yn ddyddiol.

Erbyn hyn dwi wedi codi £1,500 wrth werthu'r siwmperi a byddaf yn rhannu'r arian rhwng y tair elusen yma. Hoffwn gymryd y cyfle yma i ddiolch o galon am y gefnogaeth dwi wedi derbyn wrth werthu'r casgliad a hefyd yn ystod y cyfnod anodd yma - mae wir yn meddwl y byd i mi, diolch x.

Mor braf yw gweld merch ifanc yn datblygu busnes yng nghefn gwlad, ond hefyd yn meddwl am eraill, ac mae hynny'n rhywbeth y gallwn ni gyd gymryd ysbrydoliaeth ohono. Roedd un o siwmperi casgliad diweddar Betsan yn arddangos y geiriau 'Cofia fod 'na werth i dy wên', ac mae hynny'n dweud cyfrolau, ac yn rhywbeth pwysig i ni gyd gofio. Llongyfarchiadau mawr i ti Betsan am lwyddo i godi swm gwyb o arian ar gyfer y tair elusen hanfodol yma a phob lwc i ti yn y dyfodol - edrychwn ymlaen at weld dy fusnes yn parhau i ffynnu.

This article is in English on the FUW website - News - Y Tir News: "Betsan's inspirational story."



Y cyn dyfarnwr rygbi rhyngwladol a'r ffermwr Nigel Owens, yn gwisgo hwdi Mab y Wlad allan o gasgliad Betsan Jane er budd y DPJ Foundation, Tir Dewi a CFFI Cymru.

'I feel like I'm part of a social experiment'



FARMERS in Wales feel like they're part of a social experiment given the current Welsh Government proposal to place an untried and untested approach developed in England at the heart of future Welsh farm policy.

That was the message from FUW's Carmarthenshire County Chairman Phil Jones, (pictured above), ahead of the Welsh Senedd Elections in May.

Phil Jones, from Clyttie Cochion, Llanpumsaint, Carmarthenshire, has been farming almost his entire life and looks after 150 acres, grazing 350 sheep under organic management. He took the farm back in hand 2011 as it had been rented out following a family tragedy and is worried about the future of farming in Wales and the effects untested policies will have on the industry.

"Concerns in the farming community that the 'public goods payment' policy proposed at the core of the Welsh Government's Sustainable Farming Scheme threaten the survival of the industry are at an all time high. I feel like I'm part of a social experiment; like every farmer in Wales is part of that experiment.

"Welsh Government don't know the likely outcome of their proposal to abandon direct support and replace it with public goods payments, but some academics have suggested the policy will lead to the loss of around 25% of UK farms. No pilot schemes have been done, they haven't taken one farmer who maybe gets between 10 and 15 thousand pounds in support to see what they would have to do to receive similar sums, and how this would impact their production, their profitability and the money they spend on other businesses in their local community," he said.

The FUW has long stressed that radical changes would threaten not only farm businesses, but many thousands of

upstream and downstream businesses and jobs that rely on farm production.

In France, concerns about policy changes that go nowhere near as far as those proposed in Wales have recently sparked protests, with French agricultural union FDSEA and the Young Farmers' association stating "...a good number of farmers will cease their activity" as a result of reforms in the EU.

"What the Welsh Government is proposing is 100 times more radical than what is being proposed in France and the EU, so if French farmers are worried you can imagine how we feel," said Mr Jones.

While around 80% of Welsh farming income relies on (post-Brexit) CAP support, and average farm incomes remain well below the average UK household income, at around £24,000, such support maintains businesses with average turnovers of around £160,000 - money which circulates around the Welsh economy maintaining scores of thousands of jobs through well recognised multiplier effects.

The FUW has therefore called on the next Welsh Government to recognise the inherent damage likely to be caused to Welsh agriculture, jobs and communities by introducing greater restrictions and lower levels of direct support than those experienced by competitors in other countries against which farmers in Wales compete.

"There are so many opportunities for us in Wales to carefully develop what we already have into something that gives more for our environment, for family farms and the businesses and jobs that rely on agriculture, without throwing the baby out with the bathwater.

"An unimaginative scheme copied from a single principle

"There are so many opportunities for us in Wales to carefully develop what we already have into something that gives more for our environment, for family farms and the businesses and jobs that rely on agriculture, without throwing the baby out with the bathwater."

developed in England, as is proposed by the current government, is likely to increase costs and rules and reduce efficiency to the point where supporting those other businesses by farming sheep no longer makes sense for a farm like ours," he said.

"There is a real danger we could end up with farms that are just shells of their former presence, contributing nothing to their local communities either socially or financially," added Mr Jones.



Breathe new life into old pasture.

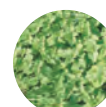
Forefront® T

HERBICIDE

grow great
grass



Docks



Nettles



Thistles



Buttercups



Dandelions



Ragwort

Forefront® T is a high performance herbicide.

It is the most effective, broad spectrum weed control solution for grassland.

Use it on permanent pastures or grazing leys to control long established or high populations of weeds.

It is your cost effective alternative to a full re-seed, quickly increasing the amount of available grass.

Let your grass breathe again. Talk to your advisor or find out more at corteva.co.uk



CORTEVA
agriscience

Discover more at corteva.co.uk
Technical Hotline: 0800 689 8899 E-mail: ukhotline@corteva.com

USE PLANT PROTECTION PRODUCTS SAFELY. Always read the label and product information before use. For further information including warning phrases and symbols refer to label.
Corteva Agriscience UK Limited, CPC2 Capital Park, Fulbourn, Cambridge CB21 5XE. Tel: 01462 457272.

*, ® Trademarks of Corteva Agriscience and its affiliated companies. © 2021 Corteva. Forefront® T contains aminopyralid and triclopyr.

Gwent insurance team - introducing our newest member of staff

by Jackie Burrows, Business Development Manager, FUW Insurance Services Ltd



GEMMA Bollen, (pictured left), joined our Gwent county insurance team in November 2020 servicing Abergavenny and the east part of Gwent, Wye Valley, Monmouthshire and South Herefordshire, working out of the Abergavenny office.

Gemma brings with her 23 years insurance experience and has a broad knowledge of all areas of insurance, from personal car and home insurance to the larger commercial business insurance, all on offer at FUW Insurance Services Ltd.

High level customer service and offering products that suit clients are two areas that Gemma prides herself on. Gemma is looking forward to being able to get out and about and meet existing and new clients in the very near future.

For all your farm, business and personal enquiries please contact Gemma on:

Mobile: 07519 330686

Office: 01873 859833

Email: gemma.bollen@fuw.org.uk

Gemma is working alongside Gwen Evans, (pictured right), who joined the FUW 23 years ago, working

as an administrative Assistant and later moved to FUW Insurance Services Ltd as an Account Handler and now one of our longest serving Account Executives, specialising in Agricultural insurance as well as Commercial and personal markets.

Coming from a farming background, Gwen is established in the rural community. Based in the Abergavenny office, Gwen covers the Brecon area and the west part of Gwent.

For all your farm, business and personal enquiries please contact Gwen on:

Mobile: 07909 570471

Office: 01873 859833

Email: gwen.evans@fuw.org.uk

Gemma and Gwen's Account Handler team consists of Julie Phillips and Ellie Davies, both based at our Abergavenny office. Both provide valuable administrative support and live locally in the county. They welcome all Gwent clients, new and existing. Julie and Ellie are available on 01873 859833.

Website: www.fuwinsurance.co.uk



Office telephone numbers

Llangefni
01248 750462

Caernarfon
01286 675136

Lampeter
01570 422556

Builth Wells
01982 553406

Carmarthen
01267 222570

Dolgellau
01341 421290

Cowbridge
01446 773108

Abergavenny
01873 859833

Llanrwst
01492 642683

Ruthin
01824 702912

Newtown
01686 623093

Haverfordwest
01437 783969

SALERS

SAFEGUARDED FROM MYOSTATIN



Herd book registrations must be free from myostatin from 1 Jan 2024

TO MAINTAIN THE MATERNAL MAGIC

STIRLING BULL SALES - 3 MAY 2021
TO INCLUDE THE FINAL DISPERSAL OF 31 MAIDEN HEIFERS AND 1 COW & CALF FROM AIDANSFIELD SALERS

WELSHPOOL SPRING SALE - 20 MAY 2021
15 COMMERCIAL FEMALES (8 CALVES AT FOOT)
28 PEDIGREE FEMALES (11 CALVES AT FOOT)
9 PEDIGREE BULLS

WWW.SALERS.UK
secretary@salers.uk 07903 626249



Agricultural Insurance

As part of the Farmers' Union of Wales, we understand the needs of farmers and specialise in farm insurance policies. Who better to help protect your farm against risks with an assured policy?

We will tailor your insurance to meet your specific requirements, covering a number of areas in one simple policy. As part of the Farmers' Union of Wales, we are dedicated to creating sustainable, thriving family farms in Wales. To achieve this, we always give our customers the best price, value and support that we can.

Your policy not only protects your farm buildings, vehicles and livestock, but it will also cover your farm in the event of a liability claim should it be the cause of property damage or injury to a visitor or employee.

Optional Features

- Farm buildings & contents
- Machinery & engineering
- Farm vehicles
- Livestock & equine
- Farm diversification
- Public, product & employers' liability

Get in touch:

0344 800 3110
info@fuwinsurance.co.uk
www.fuwinsurance.co.uk



No More Nuisance Flies & Red Mite



LodiUK

The largest range of pest control products, formulated to effectively kill insects on-farm in & around poultry, dairy & livestock housing.



FIND THE FULL RANGE AT WYNNSTAY STORES

Visit your local depot to discover high quality insecticides by Lodi UK

CONTACT WYNNSTAY:

Phone: **08707 524222** or

Visit: **wynnstay.co.uk**

FOR PEST CONTROL
PRODUCT GUIDES SCAN HERE:



Use insecticides safely. DIGRAIN C40 WP contains Cypermethrin 40%. PHOBI CAPS contains Cypermethrin 9.2%, Prallethrin 0.46%. PERBIO CHOC RTU contains 0.64% Permethrin and 0.63% Tetramethrin. MAGGOTS contains 2% Cyromazine. DAIRY FLY SPRAY contains 2.175% Pyrethrins. TWENTY ONE WP contains 10% Azamethiphos. SHEILA contains 1% Azamethiphos. LARVENOL contains 0.4% S-Methopren. DIGRAIN CONTROL contains 0.25% Permethrin, 0.24% Tetramethrin. Always read the label and product information before use.

“We need an united voice - membership of a Union provides this opportunity”

Alan Watson is a County Delegate for the FUW's Brecon & Radnor branch. He's a sheep farmer and has lived in North Radnorshire all his life. Here he gives us an insight into what it's like to be an FUW County Delegate

Why FUW?

Because it stands for family farms and lowliest member has voice within Union. It's a chance to voice opinions.

Views on the future? What do you think are the main challenges and opportunities?

- Losing the SFP is going to be a huge blow to the industry and keeping farms going without being forced to diversify to keep the farm profitable will be a challenge in the future.
- Educating the public to accept our high food standards rather than accepting lower standard imports from abroad is important, and showing that high animal welfare leads to a better outcome across the industry.
- Overcoming negative images on social media through engagement with the public.
- Keeping people, particularly the young, in the countryside and encouraging innovation in farming practices to create a better work/life balance. Increasing opportunities for vocational training rather than book learning.
- Legislators need to listen to practical solutions from people in the industry.
- The loss of council tenant farms/grass keep to encourage new entrants and youngsters starting up.

What have you learnt from being a County Delegate?

The inner workings of the Union, more benefit from attending exec meetings to keep up-to-date with progress. Being chair or vice chair aren't important as anyone can chair the meeting and give it structure. It is more important to keep the County Execs functioning and vibrant to put forward different views on farming.

Would you recommend other members come forward to be a County Delegate and why?

Yes, I've enjoyed being the delegate and attending Grand Council. It's important to hear views from all over Wales. It is fascinating to see how diverse farming is across Wales. There is no reason why more people can't attend Grand Council as an observer now that we are using more Zoom. The way to shape government policy affecting farming is through a united voice and membership of a Union provides this opportunity.

Do you feel better informed on FUW business being a County Delegate?

Yes, but I don't feel as a delegate I should know any more than an ordinary member. I am more informed from attending the meetings and feel that more information should be fed back to the members. The more you put in, the more you get out.

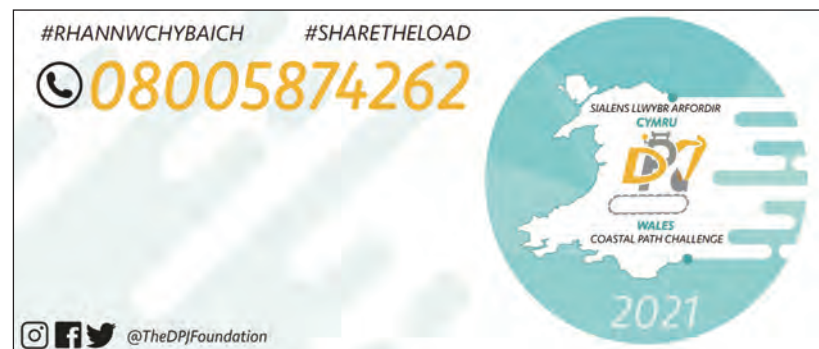
How do you work with the county office? How much input have you got through the county structure?

Very well, I like the fact that they are always available to talk and discuss issues. I feel my opinions are forwarded up to Head Office if necessary and if the county office can't answer my queries they can find someone who can.



Sign up to DPJ Foundation's new challenge

by Kate Miles, Charity Manager, The DPJ Foundation



THE DPJ Foundation is in the middle of a new challenge merging physical activity and rural mental health. The Wales Coastal Path Challenge is a virtual challenge, open to individuals and teams of four to run or walk 870 miles, the equivalent length of the Wales Coast Path, over a 3 month period. The challenge started on April 26 and ends on July 18, but if you still want to join in it's not too late.

Speaking about how this challenge came about, Sian Bowsley trustee at DPJ Foundation said: "It's widely recognised that physical activity can have a positive impact on mental health. We wanted to do something that allowed participants to boost their wellbeing after what has been a difficult time, raise awareness of rural mental health and support the Foundation. By holding this virtual event, we will be encouraging people to meet the 5 Ways to Wellbeing set out by the NHS: connecting with other people, being physically active, learning new skills along the way, giving to others and paying attention to the present moment.

The challenge was launched by Six Nations Championship winning Prop and Carmarthenshire farmer Wyn Jones, he said: "DPJ has already made a huge positive impact to farming and rural communities across Wales - getting people to talk about what's weighing on their mind is always the difficult part - but it's also training people across Wales to be mental health first aiders, regional champions and identify issues early. I'd encourage you all to get involved in this challenge to raise awareness and financial support for this vital service in Wales. Diolch."

To get involved visit: www.justgiving.com/campaign/DPJWalesCoastalPath where you can follow the link to sign up or make a donation.

New training modules to support young farmers' mental health and wellbeing

THE Farming Community Network and DPJ Foundation have seen an increase in the percentage of calls relating to mental health over the past year

A recent study by the Farm Safety Foundation revealed that 88% of farmers under the age of 40 rank poor mental health as the biggest hidden problem facing farmers today.

The Farming Community Network (FCN), National Federation of Young Farmers' Clubs (NFYFC) and The DPJ Foundation are working together to support young farmers' mental health and wellbeing through the development of new Rural+ training modules.

This initiative, titled 'Supporting Together', has been made possible by funding from The Westminster Foundation, which is Chaired by the Duke of Westminster and aims to encourage young people in farming families to take action early and to plan for the challenges and restructuring that the industry now faces.

NFYFC and FCN have worked in partnership to develop and deliver mental health awareness training to Young Farmers' Clubs in Wales and England through the Rural+ module since the launch of the project in 2013.

The name Rural+ was chosen to encourage young people to feel positive about rural life and to utilise the great network of friends and support that comes with being a member of a Young Farmers' Club. Rural+ was the brainchild of the National Chairman of Council (2013/14) Claire Worden.

FCN, along with NFYFC and The DPJ

Foundation, are working together to develop the new Rural+ mental health training module, which is aimed at 10-26 year old YFC members and 16-25 year old agricultural students yet to embark on their first placement or role in the industry.

The training is collaborative and is being developed with young farmers, young agriculture professionals and volunteers from FCN and The DPJ Foundation to ensure it is relevant and beneficial to young farmers.

The training will focus on understanding stress and anxiety; managing personal mental wellbeing; how to talk about mental health; seeking support and supporting others.

This focus on mental health awareness is timely. FCN, a charity and voluntary organisation with volunteers in Wales and England, has seen an increase in the percentage of calls to its Helpline (03000 111 999) from the farming community over the past year that contain a mental health component, such as stress or anxiety.

Meanwhile, The DPJ Foundation has seen an increase in access to professional counselling through its Share the Load service (0800 587 4262) and high demand for its Mental Health Awareness Training.

With Covid-19 restrictions still in place, the training will initially be delivered remotely by experienced Rural+ trainers, however, additional in-club modules and activities will be available later in the year.

For more information about the Rural+ training, please contact Vicki Beers, National Partnerships Manager, on vicki@fcn.org.uk

Union responds to State of Natural Resources Report for Wales 2020 (SoNaRR2020)

by Charlotte Priddy, FUW Policy Officer

NATURAL Resources Wales (NRW) have recently published the second phase of the State of Natural Resources Report for Wales 2020 (SoNaRR2020), which they are required to do under the Environment (Wales) Act 2016.

SoNaRR2020 looks at the status and trends of natural resources, building on a number of Welsh, UK and global assessments. It looks at the risks those trends pose to our ecosystems and to the long-term social, cultural and economic well-being of Wales, in terms defined by the Well-Being of Future Generations (Wales) Act 2015.

The publication of the SoNaRR2020 aims to build on the evidence base in the first SoNaRR, illustrating some of the key challenges, priorities and opportunities for the sustainable management of natural resources (SMNR).

The Sustainable Management of Natural Resources is defined in the Environment Act as: *“using natural resources in a way and at a rate that maintains and enhances the resilience of ecosystems and the benefits they provide. In doing so, meeting the needs of present generations of people without compromising the ability of future generations to meet their needs, and contributing to the achievement of the well-being goals in the Well-being of Future Generations Act.”*

SoNaRR2020 looks to what extent the Sustainable Management of Natural Resources is being achieved under the following four aims;

1. Stocks of natural resources are safeguarded and enhanced
2. Resilient ecosystems
3. Healthy places for people
4. A regenerative economy



SoNaRR 2020 is made up of a number of reports focusing on broad ecosystems (such as woodland, enclosed farmland and semi-natural grassland), cross cutting themes (such as biodiversity, climate change and land use and soils) and natural resources (including climate features and processes, and animals, plants and other organisms).

NRW believe that SoNaRR2020 sets out a range of opportunities for action to move towards a sustainable future and hope that it acts as a catalyst for positive change and a green recovery across Wales.

Headline Report Findings

The report concludes that Wales is not yet meeting the four aims of SMNR. NRW feel this is unsurprising given sustainable development will not be achieved overnight, but Wales has put the laws and processes in place to achieve its well-being goals for a sustainable future.

The headline findings on each of the four aims are:

Stocks of natural resources are safeguarded and enhanced

Wales is not maintaining stocks of natural resources. Iconic species like curlews are predicted to become extinct in Wales within a couple of decades.

Resilient ecosystems

The state of natural resources has an impact on the resilience of our ecosystems. SoNaRR2020 finds resilience to be declining in line with global trends. The UN predict that globally, one million of the eight million species on the planet will be extinct within 20 years.

Healthy places for people

Without stable levels of natural resources and resilient ecosystems SoNaRR2020 will continue to show that people across Wales are not free from environmental hazards and do not all have healthy places to live in.

A regenerative economy

A regenerative economy cannot be achieved while economic activity takes place at the expense of the environment.

FUW response

Whilst the FUW welcomes the SoNaRR 2020, noting its requirement under the Environment (Wales) Act 2016, the economic, environmental, social and cultural contribution farming makes to the well-being of Wales are understated throughout the report.

Given over 80% of the land area in Wales is farmed land it is unsurprising that agriculture features prominently within the SoNaRR reports. This farmland supports a diverse range of habitats and has been maintained by farming activity over hundreds of years. Farmers will have a key role in delivering a number of the seven areas identified as providing the greatest opportunity for dealing with the challenges and risks, including woodland cover, soils, floodplain management and the uplands.

The timescales chosen in the reports give a distorted picture of what is actually happening - for example, farming practices have changed a lot since 1946 and recent trends have not been highlighted.

As part of an evaluation of the SMNR, NRW state the need to “talk to people outside their circles” and “involve experts and local people to fully understand what the evidence is saying about a problem or issue” - such aspirations are yet to materialise. An increase in co-working with farmers and landowners to establish a more holistic picture and understanding of what happens in rural agricultural communities is required.

With SoNaRR2020 comprising over 20 documents, it makes comprehensive reading. However, such volumes of information must be distilled into achievable, realistic action points. It is imperative for NRW to evaluate the evidence proportionally if they hope it will act as a catalyst for positive change and a green recovery across Wales.

The latest SoNaRR2020 reports to be published can be accessed on the NRW Website.

Welsh Government silence on payment capping is shameful

THE failure of the Welsh Government’s Agriculture white paper to refer to payment capping is shameful and raises major concerns that a regressive move away from the policy is being considered.

That is the view of Ceredigion sheep farmer Anwen Hughes, who says the FUW is right to highlight the issue amongst one of its ten key manifesto asks.

“FUW members have consistently supported the capping of farm payments in response to consultations over the past two decades, and we successfully lobbied for their introduction when it first became possible,” said Mrs Hughes who farms around 138 acres, of which 99 acres are owned, 22.5 acres are on a lifetime farm

“The Welsh Government has been largely silent on the issue of capping payments, suggesting it is shying away from the issue and considering a U-turn.”

tenancy and a further 17 acres are rented, at Bryngido farm, just outside of Aberaeron in Ceredigion.

A limit on the amount of direct payments a farm business in Wales can receive was introduced in 2015 by the then minister Alun Davies.

“In response to the 2018 and 2019 consultations on future payments the FUW stressed the importance of a payment cap which is below the current level that takes full account of labour costs, in order to maximise the amount of money going to typical family farms and those who make the greatest contribution to rural communities and the economy,” said Mrs Hughes.

The European Commission is proposing reducing the share of direct payments received by EU farmers above €60,000 per farm and setting a limit of €100,000 per farm after labour costs have been taken into account - a position backed by the European Parliament during the negotiations with the EU ministers.

Higher levels of support per hectare for small and medium sized farms are also proposed in the EU, with both this and the topic of payment capping given a high profile in CAP reform proposals.

“By contrast, the Welsh Government has been largely silent on the issue of capping payments, suggesting it is shying away from the issue and considering a U-turn.

“This, coupled with the proposal to base payments

solely on the delivery of ‘public goods’ risks moving money from actively working family farms to large landowners, big business and landowning charities who are not producing food,” added Mrs Hughes.

The FUW’s ‘Key Manifesto Asks of the next Welsh Government’ includes a call to “Ensure payments are capped at levels which favour family farms and prevent money flowing from businesses which support rural communities and economic activity to large landowners, big business and landowning charities.”

The FUW’s Key Manifesto Asks of the next Welsh Government document can be found here: <https://fuw.org.uk/en/policy/policy-reports>

HOPKINS QUICK FIT CATTLE GRID & BASE

- LOAD TESTED TO 50 TONS
- Installed within hrs/not days
- Minimal labour
- Maintenance free
- No concrete/blocks required - set in the ground on a hard core base



Pat No.
2155526

PLEASE SEND FOR BROCHURE
HOPKINS STEEL FABRICATIONS
Unit 2A, Lion Works, Pool Road, Newtown, Powys SY16 3AG
Tel: (01686) 627374 Fax: (01686) 627515
www.hopkinscattlegrids.co.uk

Blue Peter's Green Badge campaign - Union stands up for children and farmers

THE FUW was once again frustrated with the BBC's stance on excluding red meat as part of a healthy balanced diet and especially angered that this time it was aimed at children as part of the Blue Peter Green Badge campaign. Wasting no time, we addressed the issue with Blue Peter Editor Ellen Evans and BBC Director General Tim Davie.



In his letter, FUW President Glyn Roberts said:

"Iconic programmes like Blue Peter have been watched by children all over the country with great enthusiasm and there is no doubt that it has great influence on their behaviour and opinions, with many children aiming to receive one of the coveted badges. That makes this latest campaign even more concerning, in that you (the BBC) are actively encouraging our children to eliminate red meat from their diet and insinuating that red meat production is bad for the environment.

"As a public service broadcaster, the BBC has a responsibility to provide an impartial argument. This is all the more important when communicating to children and the information on your website and in this campaign does not fulfil that responsibility."

Whilst no one will deny that climate change needs to be tackled by everyone, including our food producers, Mr Roberts said, by asking children to exclude red meat from their diet to save the planet, you are grotesquely misleading our children about the positive role red meat plays as part of a balanced healthy diet while also fundamentally ignoring the positive contributions our red meat farmers make to the environment.

The aspect of the 'Supersized Climate Hero: Plants - Choose a couple of vegetarian meal options during your two weeks as part of a healthy balanced diet' section was of particular concern to the FUW.

The SUPERSIZE Plants Pledge - Choose a couple of vegetarian meals during your two weeks as part of a healthy balanced diet - this means for a few meals don't eat meat, chicken or fish, but you can include dairy. Think about including protein, veggies that are plentiful at this time of year and eating more locally produced food.

The Blue Peter Climate Heroes calculation works out the difference between eating vegetarian and meat based meals over two weeks. It compares the carbon footprint of one red meat and one chicken dish with two vegetarian dishes and it suggests you swap four meals across two weeks - maybe at school lunches where vegetarian meals can be an option. Buying seasonal food or British grass-fed meat will also make a difference to climate change. The CO2 calculations are based on the kilograms of food in the meal being converted to CO2.

"Whilst the BBC states that 'Buying seasonal food or British grass-fed meat will also make a difference to climate change', which is welcome, the overarching message is misleading in conjunction with asking children first and foremost to exclude meat from their diet," wrote Mr Roberts.

The letter further stated that our farming and rural communities believe overwhelmingly that the BBC is inherently biased against Welsh and UK farmers and meat production, and the widespread perception that the BBC is deliberately allowing itself to be used as a vehicle for anti-meat campaigners, demonstrates that there is a very real problem that has still not been recognised by the BBC.

"Furthermore, this campaign marks just the latest of many reports broadcast and distributed by the BBC over the past few years which has focussed or relied on global figures which are not representative of Welsh and UK production systems, and appears to reflect misguided, urban-centric views about the world.

"With regards to the carbon calculator, the BBC once again fails to make a distinction between foreign production systems, which have ecological footprints that are simply not comparable to those in countries such as Wales, where carbon footprints are extremely low compared with other industries and grazing animals are essential in terms of maintaining habitat and biodiversity - as highlighted in numerous scientific studies.

"As such, we are firmly of the belief that far more effective efforts should be made by the BBC and Blue Peter to communicate both the issues of GHG emissions and health, by focussing on sustainable local and UK procurement," stated the Union President.

Misleading media reports continue to overstate the impact of agriculture - and livestock farming in particular - on UK GHG emissions. This is despite a wealth of research which demonstrates that agriculture contributes just 10 per cent of total UK emissions, with methane from livestock contributing 5.6 per cent.

This has been further evidenced by the fact that emission levels have fallen drastically in some areas during covid-19 lockdown, yet farmers are still farming. Put simply, even if the population of the UK were somehow able to stop eating altogether while continuing their daily lives unchanged, 90% of GHG emissions would continue to be produced.

"Clearly all industries and sectors have a duty to work towards reducing GHG emissions, and agriculture is doing just this through a range of efficiencies and changes to practices and land use. The 26 years between 1990 and 2016 saw a 16 per cent reduction in UK agriculture emissions and, during the same period, agriculture emissions in Wales fell by 12 per cent. Drastic cuts to meat consumption threaten to hinder such in-roads, which require significant investment and innovation.

"Misinformation about the role of agriculture and red meat production perpetuated by the BBC is leading UK and global consumers to make changes to diets and behaviours that are damaging to our climate and ecosystems, and the FUW is calling for action to be taken to redress current misapprehensions," he added.

Mr Roberts said he would welcome the opportunity to host Blue Peter on one of the many sustainable farms here in Wales to showcase how farming and red meat production helps to combat climate change and forms a part of a healthy balanced diet.

In response to our complaint, Ellen Evans, Blue Peter Editor, replied:

I would like to assure you Blue Peter is not asking viewers to give up meat. To earn a Green Badge, viewers are being asked to make three pledges for two weeks. These are:

Power: Turn off an electrical device when you are finished using it rather than leaving it on standby or switch half an hour of screen time for 30 minutes of outdoor time.

Plastic: Switch from plastic food wrap to a lunchbox or reusable sandwich wrap or sort the rubbish recycling at home carefully.

Plants: Plant pollinator friendly plants or save water by turning off the taps when you brush your teeth.

So that is how most children will apply. For group applications only, in addition to completing the three pledges above, the group can choose an additional one, either opting to choose a couple of vegetarian meal options during the two weeks as part of an overall balanced diet, switching off lights and devices when they are not in use, or swapping disposable plastic bottles for reusable water bottles. Groups have the option of choosing any one of these additional pledges based on what they're most interested in trying, and we make this clear to our audience wherever we talk about the pledges.

I welcomed your suggestion that Blue Peter should come to film on a farm in Wales because a few weeks ago we did just that; on this week's show (15th April), presenter Richie is visiting a Welsh farm to meet young farmers, so our audience can see a really positive portrayal of a family working sustainably with sheep, goats and a beef herd.

As the Green Badge initiative continues over the coming weeks, Blue Peter will be hearing from a range of people on sustainability and I hope this will address some of your concerns. On the same episode of Blue Peter when we launched our Green badge pledges, we spoke about the causes of greenhouse gas emissions with scientist Maddie Moate, this film explained how global warming is caused and talked about the impact of fossil fuels.

Maddie advised the audience that if they wanted to make a difference they could walk, or cycle and reduce use of gas and electricity in their homes. In the same episode we featured the Blue Peter veg patch and our presenter talked about the benefits of local produce saying to the audience; "think too about the impact that has on the environment, there's less packaging, there's no shipping from far away countries".

We are also featuring an organisation helping communities and working to reduce food waste. Then, next week we are on a farm in Cheshire learning about how farmers keep their soil healthy. I hope that reassures you that we always endeavour to give a balanced view whilst we encourage kids to earn their Green badges and add to the totaliser and feature their artwork showing how much they care about nature, the environment and the planet.

Thanks once again for taking the time to contact me, I appreciate your feedback and I hope that this response has allayed your concerns. If you are not satisfied however, you have the option of escalating the matter to Stage 2 of the BBC complaints process, the Executive Complaints Unit, within 20 working days, and they will carry out an independent investigation. You can do this by sending an email to mailto:ecu@bbc.co.uk

Taking action against Peta advert in Daily Post

WHEN many of you opened the Daily Post on Wednesday March 24, you will have been as surprised and angered as we were at seeing a full page PETA advert. How the industry felt was no secret as we received many phone calls from members, expressing anger, frustration and disappointment that a paper that has a strong rural and farming audience would even consider publishing an advert that encourages irresponsible and downright dangerous behaviour.

In response to the advert, we contacted the editorial team at the Daily Post, stressing that publishing an advert that encourages the public to trespass on farmland is not just stressful to the animals, it is also dangerous for the person approaching livestock - especially as many cows will be with calves at this time of year.

In our correspondence we stressed that as this advert coincided with the relaxation of

Covid travel restrictions and the Easter school holidays, it further increased our concern that members of the general public might venture into situations that are dangerous to them in order to try and comply with this inflammatory request from PETA.

The Union was clear that farmers are experts in animal health and welfare and whilst no one disputes that not every farm is perfect, the understanding of what amounts to good animal husbandry is certainly limited amongst the general public.

Speaking to the editorial team, which was also followed up with a letter, FUW President Glyn Roberts said: "It is entirely possible that individuals taking action as a result of this advert will misunderstand the situation and such misunderstandings could easily damage the reputation of the industry if the general public decide to share out of

context videos and photos based on their partial understanding of what constitutes proper care for farm animals.

"By publishing such an advert you are directly aiding a movement that, at its core, aims to damage the agricultural industry in any way possible. Whilst we understand the needs of the paper to generate income through advertising, publishing this advert is seen as a betrayal of the farming industry by our members who have so far held the Daily Post in high regard for its coverage of agriculture and farming issues in Wales."

The FUW requested a full editorial article to be published before the Easter bank holiday weekend to address the issue of trespassing on farmland and to give the industry the opportunity to set the record straight on animal welfare issues.

Successful in our request, the article below was published on Thursday April 1.

'Eradication of Bovine TB must be priority'



THE need to urgently deal with bovine TB across Wales was hotly debated by the Farmers' Union of Wales' animal health and welfare committee at a recent virtual meeting ahead of the Welsh Senedd election in May.

Speaking at the meeting, Ian Lloyd, (pictured above), FUW Animal Health and Welfare Committee chairman said: "It is a sad reflection of the ongoing problems caused by Bovine TB that the disease still warrants such detailed discussions. While improvements have been made since 2009 in regard to new herd incidents, the latest statistics show that 9,762 animals were slaughtered in the year to December 2020 in Wales."

Mr Lloyd highlighted that despite this being 20 per cent below the all time high of 12,256 animals slaughtered in 2019, the latest data shows recurrence rates of closed bTB incidents breaking down again within the subsequent 2 year period at around 30 per cent, demonstrating that the disease is not being controlled effectively under current measures.

"Whilst we are generally supportive of blanket measures such as annual and pre movement bTB testing, considerable concern exists regarding the proportionality of some measures and the severe economic restrictions they place on farms," said Mr Lloyd.

The Union has previously called on Welsh Government to establish a Wales Bovine TB Economics Task and Finish Group to provide robust, Welsh specific information on the financial impact of a TB breakdown and the subsequent mental health impact on farmers.

The Union's committee stressed that it was essential that the next Welsh Government properly balance the economic needs of farm businesses against the need to minimise disease transmission and ensure that proportionate penalties are only applied where they are appropriate, and that the practicalities of farming in the real world are taken into full account when considering appeals against penalties and sanctions.

"We further urge the next Welsh Government to implement a badger culling policy at the earliest opportunity, in line with official ministerial advice previously received by the current Welsh Government, in order to replicate the positive outcomes seen in countries throughout the world. They must also continue to support the trials and rollout of cattle vaccinations while recognising that it is only part of the answer towards eradicating Bovine TB in Wales," said Mr Lloyd.

Further FUW Key Manifesto asks of the next Welsh Government can be found here: <https://fuw.org.uk/en/policy/policy-reports>

Welcome to the countryside, but treat it with respect

The Easter bank holiday weekend is knocking on our door, the weather forecast is looking good for the start of April and we can enjoy some relaxation of the Covid-19 lockdown restrictions. Slowly but surely, Wales is set to welcome back tourists whilst the school holidays mean that many locals also have some time to enjoy our beautiful countryside.

Given how much tourism contributes to our local economy, we are certainly looking forward to having visitors back here.

As farmers and as a Union, the FUW has always supported the responsible use and access of Wales' countryside and

understands the important role that access to outdoor spaces can play in maintaining good health and well-being as well as its contribution to the rural economy. Whilst access-related tourism is clearly important to the Welsh economy, particularly in our National Parks, it should be remembered that the proportion of local residents and businesses who benefit directly or indirectly from the visitors is low, whilst the costs of upkeep for Local Authorities and others affected by rights of access, is high.

It's also worth mentioning that the sharp increase in visitor numbers to the countryside, many using public right of ways during the Covid-19 pandemic, has raised major concern across the rural and farming communities.

While Welsh Government restrictions on travelling to beauty hotspots helped to reduce such concerns in particular locations, many public footpaths running through farm holdings and near urban areas continued to see increased use by members of the public. That certainly had the potential to increase the spread of the disease by touching stiles and gates, many of which are used by our farmers to go about their daily business. This became a particular worry for those farming families who had a shielding member within their household.

Reports of visitors trespassing by wandering off a recognised footpath, livestock worrying, unclosed gates, littering and abusive antisocial behaviour have been common during the pandemic and yet efforts made by members of the FUW to liaise with local authorities to address such problems have not yielded the required outcome. A further blow to this was of course a recent advert by PETA, which encouraged the public to trespass on farmland.

Let me be frank - such actions would not just be stressful to the animals, it is also dangerous for the person approaching livestock - especially as many cows will be with calves at this time of year and ewes will protect their lambs as well. The fact that this advert coincides with the relaxation of Covid travel restrictions and the Easter school holidays further increased our concern that members of the general public might venture into situations that are



dangerous to them in order to try and comply with such inflammatory requests from organisations that know little about rural life or farming.

In addition to encouraging trespassing, which may I add is illegal, the other issue causing huge stress for our farmers are people who ignore the Countryside Code. Such irresponsible behaviour creates substantial costs and compromises animal health and welfare through dog attacks, litter, fires, gates being left open, road blockages and 'fly-camping' on farmland.

We recognise that the majority of dog owners are responsible but increased access to the countryside with dogs will result in further

livestock deaths, injuries and diseases. Given the significant rise in the numbers using public right of ways during the pandemic and consequently the increase of dogs being walked near livestock, I urge you once again - make sure you know where your dog is and keep it on a lead if you're walking in the countryside. We know that there are 3 types of livestock attack - the escapee, dog exercising off the lead or the dog not under close control but 99% of the time it's irresponsible dog owners who are at fault, not the dog.

The consequences for us farmers can be horrendous, as it can affect loss of blood-line, affect next years stock especially when ewes are in lamb or are lambing (like they are this time of year) and the stress of it can cause a ewe to abort often many days after the attack. I therefore urge you again - stick to public rights of way, look after your dog and don't be tempted to trespass on farmland. We must also remember that farms are places of work and those not familiar with the dangers of a farmyard are at huge risk to being injured.

As you walk around our countryside, you will see livestock and as you are aware, farmers are experts in animal health and welfare. Whilst no one disputes that not every farm is perfect, the understanding of what amounts to good animal husbandry is certainly limited amongst the general public.

It is entirely possible that individuals taking action to try and photograph or video what they perceive to be animals in poor health or injured, as a direct result of this advert, are in danger of risking their own health. There is also a real danger that ill-informed good intentions could easily damage the reputation of the industry if the general public decide to share such videos and photos based on their partial understanding of what constitutes proper care for farm animals. If you are concerned or are unclear why something is the way it is, try to speak to the farmer before snapping and sharing a picture or a video that lacks any context.

On a final note, I wish you all a happy Easter weekend. Let's make sure we enjoy it responsibly and stick to the Countryside Code at all times.

Cerddi cefn gwlad er budd Eisteddfod Genedlaethol yr Urdd Sir Gâr

MAE un o aelodau Undeb Amaethwyr Cymru wedi casglu gwaith bron i 150 o feirdd a rhigymwyr Llanymddyfri a'r cylch mewn cyfrol ddeniadol i godi arian at Eisteddfod Genedlaethol yr Urdd Sir Gâr, a gynhelir yn Llanymddyfri yn 2023.

Rhwng cloriau'r gyfrol, *Diferion Dyfri**, a olygwyd gan Handel Jones, Rhandir-mwyn, ceir hefyd wybodaeth am bob bardd - a llun pan fo hwnnw ar gael - ynghyd â dwsinau o luniau gan arlunwyr a ffotograffwyr yr ardal.

Bu Handel, awdur *Teulu'r Tir*, hanes Undeb Amaethwyr Cymru, wrthi am dair blynedd yn paratōi'r gyfrol ddiweddaraf. Dywedodd: "Credais ei bod yn bwysig cynnwys amrediad mor eang â phosib er mwyn adlewyrchu'r hyn a oedd yn cael ei gyfansoddi a'i ddarllen yn yr ardal dros y canrifoedd.

"Gwelir cynnyrch enillwyr Cadair neu Goron yr Eisteddfod Genedlaethol ochr yn ochr â phenillion am gymeriadau a digwyddiadau lleol. Ymhlith y farddoniaeth gynharaf, mae eiddo Lewys Glyn Cothi o'r bymthegfed ganrif, ac ymhlith y beirdd diweddaraf mae Endaf Griffiths, a aned yn 1994.

"Mae'r arlunwyr yn cynnwys y diweddar Aneurin Jones, Peter Kettle, Beryl Morgan, Lon Owen a Marilyn Evans."

Yn naturiol, mae cyfran uchel o'r gwaith barddonol yn eiddo i ffermwyr ac eraill sydd â chysylltiad agos â'r tir. Gan John Rhys Evans, a fu'n ffermio yn ardal Pumsaint tan iddo ymddeol, y cafwyd un o'r cyfraniadau mwyaf amserol, sef englyn i'r Coronafeirws:

*I ddwyn llawenydd ein llinach - hwn ddaeth,
Rhyw ddieithryn afiach.
Rhyfel hell yw hi bellach
Rhwng ein hil a'r bwystfil bach.*

**Diferion Dyfri*. Golygwyd gan Handel Jones. Cyhoeddwyd gan Wasg Llech Ddu. Pris: £20 (+ £2.70 post a chludiant). Copïau ar gael gan Dai Dyer. Ffôn: 01550 720 956 / 07977 913 637. Ebost: dyer-j4@sky.com

This article is in English on the FUW website - News - Y Tir News: "Countryside Poems to benefit Carmarthenshire Urdd National Eisteddfod."



"Keeping it in the family"

by Marjha Golding-Evans, Partner and Head of Family, RDP Law



PRE-NUPS get a rough ride in the media and have long been seen as the reserve of the super-rich. But in recent years pre-nups have slowly crept their way into succession and inheritance planning discussions as a useful tool for couples, and their families, as a way to preserve farms for generations to come.

Of course, the elephant in the room is that pre-nups don't do much to tick the 'romantic gesture' box. Lots of other lawyers use the analogy that a pre-nup should be thought of as you would a will; not a pleasant scenario to think about, but something you should do. But let's be frank here; we will all, eventually, leave this mortal world; whereas not all marriages end.

The way I put a pre-nup into context for my clients is that they should think of the need to consider one when planning a wedding just as they think about travel insurance when they are arranging a holiday. The fact is, you don't plan the trip of your life and take out travel insurance with the mindset of hoping you need it; you do it so you and your family are protected if something unexpected or painful happens. It is a small outlay now, for peace of mind and financial clarity should the worst happen.

The aim of a pre-nup is that it will reduce disputes should a married couple separate, by agreeing in advance what their financial relationship would look like on separation and what would be 'off the table' when splitting matrimonial assets.

The pre-nup, like any legal document, can be as narrow or as wide as the engaged couple wish; it can simply name a specific asset which they agree would never be shared on divorce, like a family farm, land or partnership, or go into greater detail.

Many clients ask me whether a pre-nup is legally enforceable; the simple answer is that if certain clear requirements are followed in the process of preparing the document, then on balance the court will uphold them as a clear demonstration of the intention of the two people entering into it. Whilst that is not quite the 'automatically binding' guarantee that some may expect, a well-drafted and professionally handled pre-nup should hold up to even the strictest judicial scrutiny without concern.

Those pre-nups which the courts have not upheld in the decade or more since they have been given legal effect have failed to meet the factors set down by the court; the issue has not been a simple disregard of a validly entered into pre-nup.

One thing to note is that, whilst we talk about 'what would a Judge order', many parties who separate having previously entered into a pre-nup are keenly able to agree how to finalise their settlement with clear reference to their pre-nup, without having to challenge the contents nor litigate matters at all.

If there is a dispute about a pre-nups validity which requires an application to the court, it is worth bearing in mind that recent caselaw has shown that the Court is very reluctant to write off the whole arrangement; it can be that the Court departs from some of the agreement in order to meet one party's or a child's need, but materially leave the asset/s in the pre-nup otherwise unencumbered.

Want to know more? Please get in touch with Marjha Golding-Evans on 01633 413500 or Marjha.Golding-Evans@RDPLaw.co.uk

The aim of a pre-nup is that it will reduce disputes should a married couple separate, by agreeing in advance what their financial relationship would look like on separation and what would be 'off the table' when splitting matrimonial assets.

Recruiting Reps -
See website for details

Farmplus

MANUFACTURER OF TIMBER BUILDINGS

Timber buildings
Natural products from renewable resources.
Caring for the environment.



3 BAY MONOPITCH

as shown

45ft x 17ft x 10ft 6in, eaves
delivered

Many other options available

FARMPLUS SHAY LANE, LONGRIDGE, PRESTON PR3 3BT
Tel: 01772 785252 www.farmplus.co.uk



PRAGTM

from seed to feed

QUALITY GRASS MIXTURES FOR WALES



★ Grass seed mixture offer!
BUY 10 GET 1 FREE!!
while stocks last



Our flagship mixture. The most popular grass seed mixture in our range. A highly flexible and productive long term ley, inclusive of top quality diploid and tetraploid grasses and high quality White Clover Blend. An excellent **dual purpose ley**, combining unsurpassable quality with exceptional yields. Ideal for grazing and silage production. This is a long term mixture that will give well over 7 years of top quality production. Now contains Timothy for increased palatability and winter hardiness.

An exceptionally hardy, extremely palatable and persistent grass seed mix, capable of 8 to 10 productive years. Packed with top Diploid Perennial Ryegrasses and Timothy to provide a dense bottom to the sward. Diploids makes this mixture ideal for grazing over a very long period. Flexible to make Hay, Haylage or Silage. First choice for combined Sheep & Cattle enterprises. This is an **exceptionally popular grazing mixture.**

BIJOU
• Very high yielding
• Rust resistant

GLENARIFF
• Good crown rust resistance

NIFTY
• Performs very well under grazing management schemes although its performance is best suited to grazing management.
• High Quality.

2.50kgs	ASTON VISION	INTER PRG (T)	More Meat More Milk
2.00kgs	NIFTY	INTER PRG	
2.00kgs	GLENARIFF	INTER PRG	NEXT DAY DELIVERY* *For orders placed by 10 am the day before
2.00kgs	BIJOU	LATE PRG (T)	
1.50kgs	MATHILDE	LATE PRG (T)	
3.00kgs	OAKPARK	LATE PRG	
0.16kgs	VYOSCAN	WHITE CLOVER	
0.17kgs	CRUSADER	WHITE CLOVER	
0.17kgs	LIFLEX	WHITE CLOVER	
0.50kgs	COMER	TIMOTHY	

TOTAL=14.00 KILOS/ACRE PACK

SUITS WEST WALES CLIMATE

2.00kgs	GLENARIFF	INTER PRG	Exceptionally High D Value
3.50kgs	ASTON VISION	INTER PRG (T)	
2.00kgs	GLENARM	LATE PRG	NEXT DAY DELIVERY* *For orders placed by 10 am the day before
2.50kgs	OAKPARK	LATE PRG	
2.50kgs	ASTON KING	LATE PRG	
0.50kgs	COMER	TIMOTHY	
0.50kgs	CRUSADER	WHITE CLOVER	
0.50kgs	VYOSCAN	WHITE CLOVER	

TOTAL=14.00 KILOS/ACRE PACK

SUITS WEST WALES CLIMATE

OAK PARK
• Oakpark grass variety has very good balance for spring, summer and autumn growth.
• One of the highest yielding late prg grasses on the RGCL 2020/21 list

ASTON VISION
• Very high D Value
• Incredible Crown Rust resistance
• Tremendous ground cover

TIMOTHY
• Very persistent hardy grass
• Good ground cover
• Excellent for the wet west



Top cut - does what it says on the bag. A longer duration cutting mixture capable of 5 to 7 years top quality forage production. Contains leading varieties with high cutting scores and a mixture of small, medium and large white clovers. Soluble carbohydrates /sugar levels are outstanding. Top quality grass seed combined with good ground cover and persistency.

The Superb PRAG Herbal Ley exhibits the massive benefits of herbal inclusion...

- Improves soil structure
- Provides essential minerals
- Enhanced livestock health benefits
- Increased palatability.

ASTON KING
• New late diploid
• Excellent quality yield
• Frost resistant

GLENARIFF
• Good Crown Rust Resistance

ASTON VISION
• Strong growth at lower soil temperatures

PREMIUM
• High Yielding
• Good disease resistance
• Even Maturity

2.00kgs	GLENARIFF	INTER PRG (T)	Quality long term silage
4.00kgs	ASTON VISION	INTER PRG (T)	
2.50kgs	PREMIUM	INTER PRG	NEXT DAY DELIVERY* *For orders placed by 10 am the day before
2.50kgs	ASTON KING	LATE PRG	
2.00kgs	BIJOU	LATE PRG (T)	
0.20kgs	CRUSADER	WHITE CLOVER	
0.30kgs	LIFLEX	WHITE CLOVER	
0.50kgs	COMER	TIMOTHY	

TOTAL=14.00 KILOS/ACRE PACK

GREAT FOR WEST WALES

3.00kgs	PERENNIAL RYEGRASS	LATE TETRAPLOID
2.50kgs	PERENNIAL RYEGRASS	LATE DIPLOID
1.00kgs	FESTULOLIUM	PERUN / LOFA
2.15kgs	COMMON SAINFOIN	
1.00kgs	TIMOTHY	
0.75kgs	MEADOW FESCUE	
1.00kgs	ROZETA	RED CLOVER
0.25kgs	WHITE CLOVER BLEND	HAIFA/RIVENDELL/BUDDY
0.50kgs	CRIMSON CLOVER	
0.50kgs	FORAGE BURNET	
0.50kgs	AGRIC. PER. CHICORY	
0.40kgs	RIBWORT PLANTAIN	
0.10kgs	SHEEPS PARSLEY	
0.35kgs	PERSIAN CLOVER	

TOTAL=14.00 KILOS/ACRE PACK

Provides an exciting alternative forage option, rather than just clover / ryegrass mixes.

Herbal leys help break pest cycles whilst improving soil structure.

They are an excellent addition to improving livestock performance and soil structure on farms.

01437 781780 / 01437 781500 or email: info@prag.ltd.uk

pragdirect.co.uk



PRAG LTD., MOUNTAIN FARM, BROADWAY, BROAD HAVEN, HAVERFORDWEST, SA62 3HU

Varieties subject to change

Biggest ever farmland bird count shows Welsh farmers committing to conservation

WELSH farmers and gamekeepers have shown their long-term commitment to conservation alongside productive land-use by completing this year's GWCT Big Farmland Bird Count in record numbers.

The Game & Wildlife Conservation Trust's Director for Wales, Sue Evans, said: "We could not be more delighted with the response to this year's GWCT Big Farmland Bird Count. Despite adverse weather during the count (5-21 February) participation in Wales has gone up a spectacular 91% in the last two years. This year 115 farmers in Wales took part, a 37% increase on last year. Participants recorded 107 species across more than 34,000 acres.

"All of this helps us to build a detailed picture of the state of farmland birds in Wales, allowing us to better understand what is really going on with Welsh wildlife. We would like to thank everyone who took part for demonstrating that land managers can lead the way in protecting and enhancing our countryside alongside effective food production."

The 2021 GWCT Big Farmland Bird Count has shown some encouraging results in Wales. A total of 22 species from the Red List for Birds of Conservation Concern were recorded in this year's count, with starling, fieldfare, yellowhammer and song thrush appearing in the 25 most frequently seen species list. Starling, fieldfare, lapwing, linnets and yellowhammer were the five most abundant red listed species recorded with over 5,400 individuals spotted, which equates to more than 21% of all birds counted.

The five most abundant birds seen across Wales were woodpigeon, starling, chaffinch, fieldfare and lapwing. A total of over 9,200 were counted, making up over 36% of the total number of birds recorded.

The GWCT Big Farmland Bird Count asks land managers to spend 30 minutes recording the bird species they see on their land as part of an annual UK-wide survey which helps to identify any species which are struggling. The count is a simple way for farmers and gamekeepers to assess the



natural capital on farm, an increasing requirement under the government's Sustainable Farming Scheme and to chart the effects of any conservation they carry out. Completing it year after year can help to establish the bio-diversity gains from long-term conservation efforts. The scheme was launched in 2014 to highlight the positive work done by farmers and gamekeepers in helping to reverse the decline in farmland birds.

The GWCT Big Farmland Bird Count is supported by the Farmers' Union of Wales. FUW President Glyn Roberts said: "The aim of the Big Farmland Bird Count is to raise awareness of the great conservation work being done on farms across Wales and to highlight what can be done to help farmland birds survive this difficult time of year so that the breeding populations are increased.

"We are pleased that so many farmers took part this year. It all helps us build a picture of how farming, alongside conservation, can achieve great things for the environment. It is important that the next Welsh Government and conservation bodies work with farmers. 80% of Wales is farmed land, and whilst some organisations can highlight what's happening on small nature reserves, you have to work with farmers if you want these things to be successful across the country."

Farmers from 12 Welsh counties took part in the 2021 count. Powys had the most returns, with 30 farmers completing the survey. It was followed by Ceredigion with 23, Monmouthshire with 17 and Pembrokeshire with 14.

The average farm size of those taking part was 299 acres. 58% of participants are in some form of agri-environment scheme, demonstrating their long-term commitment to environmental management.

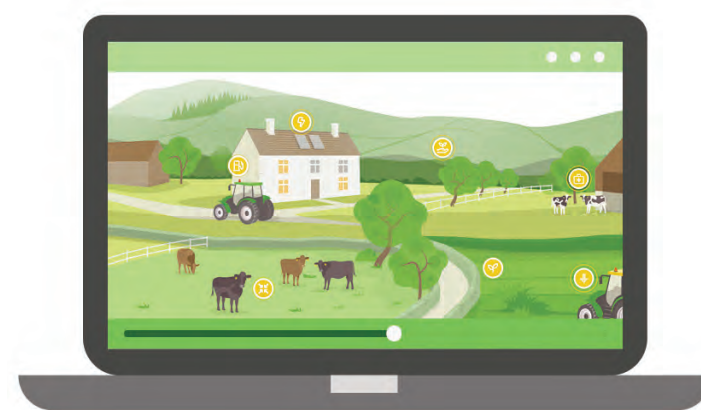
47% of participants were providing some form of extra seed feed for birds, either through growing wild bird seed mixes, or by providing additional winter feed.

The GWCT Big Farmland Bird Count is a UK-wide initiative. The 2021 count total UK results saw a 65% increase in the number of counts submitted compared to 2020, which was also a record year. The land area covered by the count has more than doubled to over a million hectares and 81% more birds have been counted this year by more than 700 additional volunteers. Participation rates increased in England, Wales and Scotland. Word of the scheme has also spread beyond the UK's shores, with surveys coming in from a number of farmers in Austria.

The GWCT would like to thank the NFU for sponsoring the GWCT Big Farmland Bird Count, which it delivered in partnership with the FUW, UFU (Ulster Farmers' Union), CLA, Kings, CFE, the FWAG Association, National Sheep Association, Camgrain and LEAF.

Reduce negative impacts on the environment through sustainable farming

The resource highlights the positive messages that farmers make to the environment, such as the ability of agricultural soils to store large amounts of carbon, and the role agriculture has in providing clean drinking water and habitats.



THERE is growing pressure on the agricultural sector in Wales, the UK and throughout the world to improve its environmental performance. Put simply, farmers and foresters should operate in ways that don't impact adversely on the environment but improve and preserve for the future. By 2050, the Welsh Government wants all Welsh farm businesses to be carbon neutral. What does this mean for you, the farmer?

Farming sustainably means taking action to help solve key environmental concerns. Farmers have a significant role to play. A few of the ways they can contribute to tackling climate change is through reducing greenhouse gas (GHG) emissions and storing carbon in trees, soils and peatland; cleaner water by careful use of manures and fertilisers; cleaner air through improving slurry management; improving soil health and creating greener landscapes through increasing biodiversity and enhancing natural habitats.

The good news is that running a sustainable business which minimises harm to the environment will also help you run a more efficient, effective and profitable farm enterprise. Farming Connect can provide the support you need, whether you're right at the beginning of your 'getting greener' journey or ready to strengthen your farm systems further.

Lee Price, Farming Connect's knowledge transfer programme Development Manager says that Farming Connect can help you make a difference, help you get your 'carbon neutral' journey off to a strong start.

"With our support, you will be able to identify where you are today in terms of your farm's carbon footprint and biodiversity and access the guidance you need to address some of the key areas where environmental and cost-effective improvements can be made," said Mr. Price.

Farming Connect will this month (May) publish a 'Let's get greener' booklet which sets out a range of support services available.

Farming Connect has also developed an interactive online resource which gives advice on achievable steps farmers can take to reduce emissions from their businesses. Visit www.gov.wales/farmingconnect to access the 'Increase profitability, reduce GHG emissions' tool.

The resource highlights the positive messages that farmers make to the environment, such as the ability of agricultural soils to store large amounts of carbon, and the role agriculture has in providing clean drinking water and habitats.

Cymru Lan

Fallen stock collection services

And all farm plastic recycled

National fallen stock members

and non-members welcome

• Butchery Waste • Cardboard

• Recycle

Chris Bennett

07979 883 650 • 01248 422 220

Cymru_lan@btconnect.com

Byddwch yn rhan o Gyfrifiad 2021 - nid yw'n rhy hwyr

gan Huw Davies, Rheolwr Ymgysylltu'r Cyfrifiad, Ceredigion a Phowys

MAE miliynau o gartrefi ledled Cymru a Lloegr eisoes wedi gwneud yn siŵr y byddan nhw'n cael eu cyfrif pan ddaw'r amser i gynllunio a darparu'r gwasanaethau allweddol rydym ni i gyd yn dibynnu arnynt, fel meddygfeydd, lleoedd mewn ysgolion a gwelyau mewn ysbytai, drwy lenwi holiadur ar-lein y cyfrifiad.

Fodd bynnag, mae'n hanfodol bod pawb sydd heb ymateb eto yn gwneud hynny cyn gynted â phosibl, gan bod Diwrnod y Cyfrifiad, sef 21 Mawrth, bellach wedi mynd heibio. Rydym yn awyddus bod teuluoedd yn yr ardaloedd gwledig yn cael eu cyfrif gan y Cyfrifiad, ac felly rydym yn gofyn i aelodau o fudiadau amaethyddol i sicrhau eu bod nhw'n llenwi'r ffurflen cyn gynted a bo modd.

Yn ôl y gyfraith, mae'n rhaid i bawb gwblhau'r cyfrifiad, ac os byddwch chi'n gwneud hynny nawr, ni chewch ddirwy. Mae holiadur y cyfrifiad yn syml ac mae'n ddiogel i'w gwblhau ar lein. Dim ond 10 munud fesul unigolyn o bob cartref mae'n ei gymryd i'w gwblhau.

Y mae pob cartref wedi cael llythyr drwy'r post ar ddechrau mis Mawrth gyda chyfarwyddiadau er mwyn cymryd rhan. Os ydych chi wedi colli'r llythyr neu os oes gyda chi ail gyfeiriad nad ydych chi wedi ymweld ag ef, ewch i cyfrifiad.gov.uk i ofyn am god mynediad ar lein ar gyfer eich cyfeiriad drwy neges destun. Mae'r holl help sydd ei angen arnoch ar lein.

Mae Rheolwr Ymgysylltu'r Cyfrifiad ar gyfer pob sir yng Nghymru ar gael ar y ffôn, ac yn barod i helpu unrhyw un sydd eisieu cymorth, neu gael trafodaeth os nad ydych yn siŵr eich bod eisieu llenwi'r ffurflen. Cysylltwch gyda nhw os ydych angen unrhyw gymorth.

I gael gafael ar eich rheolwr ymgysylltu'r cyfrifiad/cynghorydd cymunedol lleol, defnyddiwch y manylion cyswllt isod:

Rhondda a Merthyr Tudful -
Darren Alderman - darren.alderman79@field.census.gov.uk

Caerdydd - Ena Lloyd a Phillip Burkhard -
ena.lloyd16@field.census.gov.uk /
philip.burkhard70@field.census.gov.uk

Casnewydd, Sir Fynwy a Torfaen -
Ellie Barker - helen.barker85@field.census.gov.uk

Abertawe - Sharon Jones -
sharon.jones75@field.census.gov.uk

Ceredigion a Powys -
Huw Davies - gareth.davies82@field.census.gov.uk

Pen-y-bont ar Ogwr a Bro Morgannwg -
Michael Mulcahy - michael.mulcahy30@field.census.gov.uk

Sir Gar a Sir Benfro -
Nia Taylor - nia.taylor17@field.census.gov.uk

Gwynedd, Ynys Môn a Conwy -
Darren Thomas - darren.thomas06@field.census.gov.uk

Caerffili a Blaenau Gwent -
Alan Cotterill - alan.cotterill88@field.census.gov.uk

Castell Nedd a Phort Talbot -
Katie Powis - katie.powis01@field.census.gov.uk

Sir Dinbych, Wrecsam a Sir Y Fflint -
Denzil Hughes - denzil.hughes12@field.census.gov.uk

cyfrifiad census 2021

Millions of households across England and Wales have already made sure they count when it comes to planning and provision of the key services we all rely upon, like GP surgeries, school places and hospital beds, by filling out their online census form. However, it is essential that everyone who has not yet responded does that as soon as possible now that Census Day, which was March 21, has passed. It is important that those families living in the rural areas are counted in the Census and we call on those who are members of Agricultural Institutions to ensure that they complete the Census forms. Everyone is required by law to respond to the census and if you do so now you won't be fined. The census questionnaire is simple, straightforward, and safe to complete online. It only takes 10 minutes per person in a household. All households will have been sent a letter in the post in early March with instructions for taking part. If you have lost the letter or have a second address you have not visited, go to census.gov.uk to request an online completion code for your address via SMS text message. You'll find all the help you need online. A Census Engagement Manager for each county in Wales is available at the end of the phone line and ready to help anyone who needs help, or have a discussion if you are not sure you want to fill in the form. Please contact them if you require any help.

Ymgeisiwch nawr ar gyfer cyllid sgiliau Cyswllt Ffermio i...

...ddatblygu eich sgiliau, datblygu eich busnes ...cynllunio ar gyfer y dyfodol

Farming Connect skills funding. Apply now to...

...develop your skills, develop your business ...plan ahead now

Mae'r cyfnod ymgeisio am gyllid sgiliau ar agor rhwng 03 Mai - 25 Mehefin 2021

The skills funding application window is open between 03 May - 25 June 2021

- Mae cymhorthdal o hyd at **80%** ar gael ar gyfer cyrsiau hyfforddiant i unigolion sydd wedi cofrestru
- Mae mwy na **70 o gyrsiau** ar gael, dan gategoriâu 'Busnes', 'Tir' a 'Da Byw'
- Rhwydwaith o **ddarparwyr hyfforddiant cymeradwy** wedi'u lleoli ledled Cymru
- Un cais i bob cyfnod ymgeisio gan unigolyn cofrestredig
- Uchafswm o ddau gais i bob busnes cofrestredig ym mhob cyfnod ymgeisio
 - Bydd y rhai sy'n gwneud cais am hyfforddiant am y tro cyntaf yn cael eu blaenoriaethu

- All training courses subsidised by up to **80%** for registered individuals
 - More than **70 courses** available, categorised under 'Business', 'Land' and 'Livestock'
 - Network of **approved training providers** located throughout Wales
 - One application per window from a registered individual
 - Maximum of two applications per window per registered business
 - Those applying for training for the first time will be prioritised



08456 000 813

www.llyw.cymru/cyswlltffermio
www.gov.wales/farmingconnect



Severn Wetland?

Dear Editor,

The proposed Sustainable Farming Payment will be available for both "maintenance" and "creation" of semi natural habitat. For example, if a farmer already manages an area of semi-natural habitat, SFP can pay for this to continue. If a farmer wishes to create a new area of semi-natural habitat, Sustainable Farming Payments can be made to reward the farmer for delivering this.

For a farmer with lowland improved pasture that has been drained, reseeded and fertilised over many years there is little scope for creating 'semi-natural grassland'. The soil is too rich. The government grants in the 70's and 80's have had a lasting effect. Productivity has increased dramatically.

The few bits of lowland semi natural grassland that have escaped agricultural improvement are mainly on nature reserves though the MOD has some of them. Nothing like unexploded ordnance to put people off ploughing. Creating species rich grassland from improved pasture is very difficult. It is easier if you start by removing the top layer of soil. The soil is too rich. You get docks and nettles and not much of biodiversity value.

Most productive lowland farmers will be effectively excluded from this option under the Sustainable Farming Payment. That will mean they will have lost the basic payment scheme that they used to have under CAP and will not find they are eligible for, or have the points for, the new scheme.

Many green campaigners will say that we should be producing more of our own protein crops like field beans rather than buying soya from Brazil where the trade encourages the destruction of rainforest but that's another story.

There is one chink of hope for some farmers. Every year we have floods. With global warming we will have more frequent floods. The Welsh uplands that were drained at government expense now put their water into the rivers very quickly.

The Severn floods regularly from Shrewsbury to Gloucester. Go back a thousand years or more and those river valleys would have large areas of wet woodland growing in peaty wetlands. Farms like Wern Ddu or black bog in Welsh betray their history.

If we recreated these wet woodlands we could tick all the government's boxes in one go. They absorb carbon, improve water quality, slow down floods, increase tree cover and would be brilliant for biodiversity. A massive wooded wetland on the upper Severn would have little egrets, great white egret, osprey and cetti's warbler all of which have moved in recently. Otters are already there.

It would be a mecca for birdwatchers and the basis of a tourist industry. The fashionable beaver would have his own web cam. You wouldn't need a massive dam just a few diggers and the support of the landowners.

The tree planting would qualify for forestry grants. Alder, black poplar, willow and sallow thrive under these wet conditions and would eventually provide firewood if not much else. Big scrapes for reed beds would provide the soil for any embankments required. Water management could spread any impending flood over a wide area.

You could do your Christmas shopping in Shrewsbury without worrying about Frankwell carpark being under water.

The main problem as I see it is that the main beneficiary in terms of flooding would be England not Wales. The farmers would need proper compensation for giving up good arable land that they pay £10k an acre for. It grows good wheat and excellent maize for silage. Would England pay up?

Yours Sincerely

Simon Spencer (Dr)

NEWYDDION O'R SIR / FUW COUNTY NEWS

ANGLESEY

anglesey@fuw.org.uk

01248 750250

Aelod Oes - Anrhydeddus

Llongyfarchiadau mawr iawn i Mr Richard Hughes, Glanrafon, Malltraeth, (**gweler ar y dde**), ar gael ei anrhydeddu yn Aelod Oes o Gymdeithas y Gwartheg Duon Cymreig. Dyma anrhydedd llwyr haeddiannol. Mr Hughes yw'r drydedd genhedlaeth i fod yn aelod o'r Gymdeithas wedi i'w Daid, Mr Thomas Hughes, ymaelodi yn wreiddiol ym 1943. Daeth Mr Hughes yn aelod o'r Gymdeithas ym 1967 a bellach mae ei wŷr, Mr Gethin Hughes, yn parhau gyda'r fuches deuluol, sef 'Rafon'. Llongyfarchiadau a phob dymuniad da i chi Mr Hughes.

Congratulations to Mr Richard Hughes, Glanrafon, Malltraeth, (pictured right), on being honoured as a Lifetime Member of the Welsh Black Cattle Society. This is an entirely deserved honour. Mr Hughes is a third generation member of the Society after his grandfather, Mr Thomas Hughes, originally joined in 1943. Mr Hughes became a member of the Society in 1967 and now his grandson, Mr Gethin Hughes, is continuing the family herd, 'Rafon'. Congratulations and best wishes to you Mr Hughes.



Cyfarfod Hystings Amaethyddol



Ar nos Lun y 19eg o Ebrill cynhaliwyd cyfarfod Hystings Amaethyddol ar-lein gydag ymgeiswyr Etholaeth Môn, yn Etholiad y Senedd ar y cyd â NFU Cymru a CFFl Môn. Cafwyd trafodaethau di-dor gyda'r ymgeiswyr am ein pryderon am ddyfodol y diwydiant, yn ogystal â chyfle i rannu pryderon am faterion lleol.

Ymysg y trafodaethau, cafwyd cyfle i ddatgan y siom a'r pryder o benderfyniad y Llywodraeth i gyflwyno Rheoliadau Adnoddau Dŵr (Rheoli Llygredd Amaethyddol)

(NVZ) yn ogystal â rhannu pryderon am yr argyfwng ail-gartrefi ar yr Ynys. Diolch i'r pedwar ymgeisydd am eu hamser ac i Mr Tom Jones am gadeirio'r noson.

On Monday April 19, an online Agricultural Hustings meeting was held with Anglesey Constituency candidates for the Senedd Election in conjunction with NFU Cymru and Anglesey YFC. There were uninterrupted discussions with the candidates regarding our concerns about the future of the industry, as well as an opportunity to share concerns about local issues. Discussions included our disappointment and concern over the Government's decision to introduce The Water Resources (Control of Agricultural Pollution) Regulations (NVZ), as well as sharing concerns about the second home crisis on the Island. Thanks to the four candidates for their time and to Mr Tom Jones for chairing the evening.

CEREDIGION

ceredigion@fuw.org.uk

01570 424515

Llongyfarchiadau!

Enillwyr Clwb 200 Ceredigion ar gyfer mis Ebrill / The April 200 Club winners:



CARMARTHEN

carmarthen@fuw.org.uk

01267 237974

Welsh Senedd hopefuls quizzed at hustings

FARMERS from Carmarthenshire took the opportunity to quiz their prospective Senedd Members for the Carmarthen East and Dinefwr constituency at virtual hustings on Tuesday April 13, the Llanelli constituency on Friday April 16 and Carmarthen West and South Pembrokeshire constituency on Monday April 19, all meetings were hosted jointly on Zoom by the FUW, Wales YFC and NFU Cymru.

Speaking after the meeting, FUW Carmarthenshire County Executive Officer David Waters said: "Many members of the farming community took up this opportunity to pose questions to those that seek to represent them in Cardiff for the next Welsh Senedd term.

"The big questions around NVZs, river pollution by water companies and future Welsh policies were high on the agenda and the FUW will continue to lobby on these."

Mr Waters added that the incoming Welsh Government must listen to the farming community and develop bespoke policies for Wales.



DENBIGH & FLINT
dinbychflint@fuw.org.uk
01824 707198

Hystings Sir Ddinbych

Cynhaliwyd cyfarfod hystings ar nos Fawrth Ebrill 20 dros Zoom ar gyfer aelodau Sir Ddinbych ar y cyd gyda chynrychiolwyr o'r NFU a CFFI, hefo Dewi Davies, NFU yn cadeirio.

Roedd 4 ymgeisydd yn rhan o'r drafodaeth, sef Llyr Huws Gruffydd, Plaid Cymru; Barbara Hughes, Ceidwadwyr; Leena Sarah Farhat, Democratiaid Rhyddfrydol a Jackie Jones, Llafur.

Cafwyd cyfarfod gwych gyda thipyn o gwestiynau diddorol iawn gan ffermwyr yr ardal yn amrywio o garthu afonydd i TB, ag yn amlwg cafwyd sgwrs am yr NVZ.

On Tuesday April 20, a hustings meeting was held via Zoom for Denbighshire members in conjunction with representatives from the NFU and YFC, chaired by Dewi Davies, NFU. Four candidates took part in the discussion, namely Llyr Huws Gruffydd, Plaid Cymru; Barbara Hughes, Conservative; Leena Sarah Farhat, Liberal Democrats and Jackie Jones, Labour.



It was a great meeting with some very interesting questions from farmers in the area ranging from river dredging to TB, and obviously there was also a discussion about the NVZ.

MEIRIONNYDD
meirionnydd@fuw.org.uk
01341 422298

Pwyllgor Gwaith

Cynhelir Pwyllgor Gwaith nesaf Cangen Sirol Meirionnydd Nos Iau yr 20fed o Fai drwy gyfrwng Zoom. Bydd agenda llawn yn cael ei ddanfôn wythnos ymlaen llaw yn ôl yr arfer.

The next Meirionnydd County Branch Executive Committee will be held on Thursday May 20 via Zoom. A full agenda will be sent a week in advance as usual.



'Hystings' Etholaeth Dwyfor-Meirionnydd

Cynhaliwyd 'hystings' etholiad ar gyfer etholaeth Dwyfor-Meirionnydd ar yr 20fed o Ebrill drwy gyfrwng Zoom. Roedd y ddwy Undeb amaeth wedi dod ynghyd i wneud y trefniadau, ynghyd a mudiad y Ffermwyr Ieuainc, a diolch yn fawr iawn i bawb am y cydweithio.

Roedd 5 allan o'r 8 ymgeisydd yn rhan o'r drafodaeth, sef Stephen Churchman ar ran y Democratiaid Rhyddfrydol, Charlie Evans ar ran y Ceidwadwyr, Mabon ap Gwynfor ar ran Plaid Cymru, Cian Ireland ar ran y Blaid Lafur, a Peter Read ar ran Plaid Propel. Rhoddwyd cyfle i bob ymgeisydd roi cyflwyniad o ddim mwy na 5 munud, ac yna agorwyd y drafodaeth i gwestiynau a sylwadau.

Cafodd ystod eang o bynciau cyfredol a pherthnasol i ddyfodol y diwydiant amaeth a chefn gwlad eu gwyntyllu. Braf oedd clywed pob un o'r ymgeiswyr yn cytuno i gadw'r gyllideb ar gyfer amaeth. Diolch yn fawr iawn i holl aelodau Sir Feirionnydd a Sir Gaernarfon ac i bawb arall wnaeth ymuno a chymryd rhan yn y drafodaeth. Roedd yn noson lwyddiannus iawn.

Election hustings for the Dwyfor-Meirionnydd constituency were held on April 20 via Zoom. The two agricultural Unions joined forces to make the arrangements, along with the YFC, and a big thank you to everyone for the collaboration. 5 of the 8 candidates were involved in the debate, namely Stephen Churchman for the Liberal Democrats, Charlie Evans for the Conservatives, Mabon ap Gwynfor for Plaid Cymru, Cian Ireland for the Labour Party, and Peter Read for the Propel Party. Each candidate was given the opportunity to give a presentation of no more than 5 minutes, and the discussion was then opened to questions and comments. A wide range of current topics relevant to the future of the agricultural industry and the countryside were explored. It was good to hear all the candidates agreeing to keep the budget for agriculture. Many thanks to all the members of Meirionnydd and Caernarfon and to everyone else who joined in and participated in the discussion. It was a very successful evening.

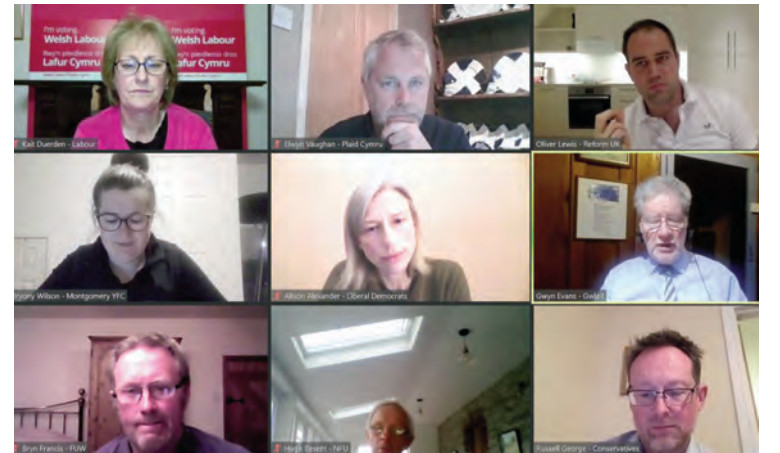
MONTGOMERYSHIRE
montgomeryshire@fuw.org.uk
01686 626889

Senedd Election Hustings

The Senedd Election Hustings for Montgomeryshire was jointly held by Montgomery YFC, FUW Montgomery, NFU Cymru and CLA Montgomery on Wednesday April 21 2021.

The evening was chaired by Bryony Wilson, Montgomery YFC Chair, and gave everyone a chance to hear what the Montgomeryshire Candidates had to say ahead of the May 6 Elections.

The candidates that joined us were: Oliver Lewis - Reform Party; Elwyn Vaughan - Plaid Cymru; Gwyn Evans - Gwlad; Russell George - Conservatives; Kait Duerden - Labour; and Alison Alexander - Liberal Democrats.



PEMBROKESHIRE
pembrokeshire@fuw.org.uk
01437 762913

Candidates questioned at Hustings

During April, Pembrokeshire FUW held a joint Hustings with Pembrokeshire YFC via Zoom.

Members of both organisations had the opportunity to question the four main candidates in the Preseli Pembrokeshire constituency, namely, Paul Davies, Conservatives; Jackie Jones, Labour; Tina Roberts, Liberal Democrats; and Cris Tomos, Plaid Cymru.

The candidates were questioned about the new agricultural pollution regulations, bovine TB, the potential impact of the Internal Market Bill on the Senedd's powers and the challenges facing young people entering the industry including housing availability and affordability.



Upcoming EOI window details


Scheme	Summary	Window closes
Transfer of BPS Entitlements 2021	Farmers can now transfer their BPS Entitlements by sale, lease or via inheritance. This must be completed via RPW Online. Please note that the entitlement values displayed on your account are subject to change.	15 May 2021
Free & Confidential Pesticide Disposal Scheme 2021	Dŵr Cymru Welsh Water is once again running their free and confidential pesticide disposal scheme in 2021. This scheme is part of the PestSmart project and offers farmers, growers, gamekeepers, foresters, and other land managers the opportunity to safely dispose of any unwanted, out of date or unlicensed pesticides and herbicides for free.	31 May 2021
Farming Connect Training Window	The next funding application window for training opened on Monday, 3 May until Friday, 25 June 2021. Those registering for the first time during the above skills window in order to apply for a funded training course or need to update their account details, please contact Farming Connect before 5pm on Monday 21 June 2021.	25 June 2021
Nuffield Farming Scholarships	Applications for the 2021 Nuffield Farming Scholarships are now open. Successful applicants tend to be from those working in farming, food or horticulture and are provided a substantial bursary to fund travel to study their chosen topic.	31 July 2021


**NATURALLY
BETTER** than
formaldehyde
and copper



Hoofsure Endurance

Increase productivity and reduce lameness with Hoofsure Endurance – the safe, clinically proven and cost-effective footbath:

 **Clinically proven** – Active organic formulation that helps to clean feet and prevent lameness. Up to 44% more effective than copper and formaldehyde.*

 **Safe to use & dispose** – Biodegradable, natural footbath solution that's better for the environment and safer for animal and human health.

 **Formaldehyde is carcinogenic**

 **Copper is illegal**

*References available on request

SPECIAL OFFER

Purchase 3 x 20 litre
Hoofsure Endurance

RECEIVE FREE

- 5 litre acid resistant sprayer
- Hoofsure Konquest 300g

Valid whilst stocks last. Terms and Conditions apply.



50kg
COPPER SULPHATE
300 COWS

25 litre
FORMALDEHYDE
375 COWS

20 litre Hoofsure Endurance **5000 COWS**

MORE COWS PER LITRE!

Find out more visit: www.provita.co.uk

Call freephone: 0800 3284982 or contact your nearest stockist.



Provita
Animal Health Naturally

MEAT MATTERS

Nutritional Benefits to Lambs Bred the 'Welsh Way'

by Dr Eleri Thomas, Meat Quality Executive, Meat Promotion Wales

EARLIER this year we were delighted to receive our first set of results from the Welsh Lamb Meat Quality Project. We have been investigating the influence which a lamb's finishing diet has on the nutritional profile of lamb and are pleased to have found some quite telling results: meat from lambs finished on grass contain higher levels of amino acids, including some essential amino acids.

Amino acids are the building blocks of protein and are vital for many of the body's functions. Essential amino acids cannot be produced by the body and must be obtained through the diet. These amino acids contribute to many different healthy body functions including: energy production, muscle growth and immune function.

Our independent analysis compared lambs finished on grass to lambs finished on a concentrate diet and showed that the lambs reared on grass-based diets contained higher levels of these essential amino acids compared to concentrate finished lambs: Leucine, Lysine, Threonine, Tyrosine and Valine.

These results are great news for farmers and the industry, but moreover, for consumers too and it is an important message which we will be using across the supply chain. HCC's recent Welsh Way report highlighted Wales' grassland and pasture-based farming systems as a positive attribute in sustainable farming, and now we know that grass-finished Welsh Lamb is also healthy for consumers too, providing key essential nutrients.

The overall aim of the project is to understand how we can produce a consistently high-standard product which is fitted to consumers' wants and needs. The nutritional analysis of the lamb samples is just one part of the work. Later in the year, if Covid allows, the

Project will recruit 480 consumers in three cities across the UK to be part of a 2,000-strong group of people that will taste and score the lamb on aroma, tenderness, juiciness and flavour. This valuable consumer feedback will inform the sector on how to enhance the Welsh Lamb eating quality experience.

We're really pleased with the results coming out of the project so far and we look forward to sharing more with you in the future.

HCC's Welsh Lamb Meat Quality Project is one of three 5-year projects in the Red Meat Development Programme which is funded by the Welsh Government Rural Communities - Rural Development Programme 2014-2020, which is funded by the European Agricultural Fund for Rural Development and the Welsh Government.

Yn gynharach eleni roedd Hybu Cig Cymru (HCC) yn falch iawn o dderbyn y set gyntaf o ganlyniadau gan Brosiect Ansawdd Cig Oen Cymru. Maent wedi bod yn ymchwilio i'r dylanwad y mae diet gorffen cig oen yn ei gael ar broffil maethol cig oen ac mae HCC yn falch eu bod nhw wedi dod o hyd i rai canlyniadau eithaf syfrdanol: mae cig o wŷn wedi'i orffen ar laswellt yn cynnwys lefelau uwch o asidau amino, gan gynnwys rhai asidau amino hanfodol.



PROPERTY MATTERS

Tenants warned to take care when signing new agreements

by Davis Meade
Property Consultants



AGRICULTURAL support in the future will be geared towards delivering environmental services such as managing land and water for wildlife and cultural and natural heritage; supporting public access; climate change mitigation; animal health and welfare and plant protection.

But tenant farmers should carefully scrutinise any new tenancy agreements they are asked to sign as changes to clauses could restrict them from accessing potential income earning schemes in the future.

We are concerned about some of the clauses being used in the development of standard 'template' Farm Business Tenancies (FBT) which insist on the tenant obtaining and maintaining maximum rights and entitlements under any new Government schemes.

If tenants do sign these sorts of agreements they risk jeopardising their opportunity to get involved in private sector biodiversity, nitrate and carbon markets.

Davis Meade Property Consultants is part of a consortium that is developing a resource to help farmers attract private sector funding which could be far more lucrative and flexible than some of the proposed Government schemes.

It would be a lost opportunity, for both landlords and tenants, to see tenancies restricted to government schemes only, thus precluding prospects for working with the private sector.

The Tenant Farmers Association (TFA) is also concerned about this as many tenants are not allowed to enter Government schemes to improve the environment without their landlord's consent. Some landlords are reserving the right to take the benefit of new schemes themselves and to profit from private arrangements for carbon and biodiversity offsetting.

George Dunn, the TFA Chief Executive has stated that he cannot support a situation where the funding is removed from tenant farmers and is received instead by their landlords. Landlords are entitled to receive rent in return for granting exclusive occupation of their land to active farmers, they should not be able to capitalise directly through Government schemes and other arrangements.

For more information contact Davis Meade Property Consultants on 01691 659658.

Bydd cefnogaeth amaethyddol yn y dyfodol yn anelu at ddarparu gwasanaethau amgylcheddol megis rheoli tir a dŵr ar gyfer bywyd gwyllt a threftadaeth ddiwylliannol a naturiol; cefnogi mynediad cyhoeddus; lliniaru newid yn yr hinsawdd; iechyd a lles anifeiliaid a diogelu planhigion. Ond dylai tenant-ffermwyr edrych yn ofalus ar unrhyw gytundebau tenantiaeth newydd y gofynnir iddynt eu llofnodi gan y gallai newidiadau i gymalau eu cyfyngu rhag cael mynediad at gynlluniau ennill incwm posibl yn y dyfodol. Am ragor o wybodaeth cysylltwch â Davis Meade Property Consultants ar 01691 659658.

MERCHED MEWN AMAETH

Camu ar draws Cymru

gan Tegwen Morris, Cyfarwyddwraig Cenedlaethol, Merched y Wawr

WEL am fis oedd mis Ebrill - camu ar draws Cymru a phob un o'r aelodau yn cyfrif pob cam, miliwn o gamau oedd y nod, ond dwi yn amau ein bod wedi llwyddo i wneud hynny o fewn yr wythnos gyntaf.

Roedd gwagedd fferm oedd ynghanol prysurdeb yr wyna a'r lloia yn gwneud camau rhyfeddol yn ddyddiol a rhai fel fi yn gorfod crwydro ychydig allan o'r dre. Roedd cerdded rhannau o lwybr yr arfordir wedi gwneud i mi werthfawrogi prydferthwch cefn gwlad o'r newydd.

Mae nifer o'n haelodau wedi ymuno ar gwrs "Sgiliau Hanfodol Digidol" ac mae'n wir i ddweud ein bod yn elwa o ddysgu a deall mwy, ac mae'r hen ddywediad yn wir "petai ti yn byw nes dy fod yn gant fe allu di ddysgu rhywbeth newydd bob dydd".

Cafwyd hefyd gyflwyniad diddorol gan Wyn Thomas o Tir Dewi - ac mae'r ffaith fod hwy yn barod i gynnig llaw o gymorth yn werth i bob un ohonom gofio - felly os oes rhywbeth nad ydych yn medru ei wneud neu yn pryderi amdano - gofynnwch am gymorth, gall fod mor syml a llenwi ffurflen ar lein neu gael cymorth i lwytho moch!

Mae'r aelodau yn dal yn brysur yn creu blodau gobai ac edrychwn ymlaen at greu arddangosfa dros dro yn Aberystwyth, cyn cael y cyfle i fynd i Dregaron flwyddyn nesaf. Hefyd cofiwch edrych allan am rifyn Mai o gylchgrawn Y Wawr, lle byddwn yn cyfwrdd tair mam a merch sy'n cyfrannu yn helaeth i'r byd amaethyddol.

Diolch i chi gyd am gefnogi'r holl weithgareddau ac erbyn mis nesaf gallwn rannu rhai o uchafbwyntiau ein Gŵyl Haf. Cefais y cyfle fis diwethaf i rannu rhai o fy atgofion gyda Dei Tomos, a wir os oes gan rhai ohonoch atgofion o fod yn was fferm neu gyflogi gwas fferm byddwn yn hoff iawn o glywed gennych.

Merched y Wawr set themselves a challenge of walking a million steps during April and the steps quickly increased as many members were busy helping with the lambing and calving. A number of members learned and gained useful knowledge by joining a course, "Essential Digital Skills". We look forward to sharing the highlights from our Summer Festival next month.



Taith gerdded "Curo'r Corona'n Camu".

Be safe, follow the guidance and come home at the end of the day

by Emma Davies, FUW Wales Farm Safety Partnership representative

OVER the past two months we have sadly received further fatality notifications from the HSE. The initial notifications were of a young person being killed when she was run over by a seed drill being pulled by a tractor and a young worker was killed when he was struck by a vehicle trailer. That's two families who have lost a loved one; who will be grieving and no doubt painfully feel their absence. And our thoughts and condolences go out to them.

Our hearts sink every time one of those notifications drops into the email inbox. Whilst on paper they are just a number, just a statistic, behind the numbers are families, people who at the start of the day thought they would come home to see their families at the end of the day.

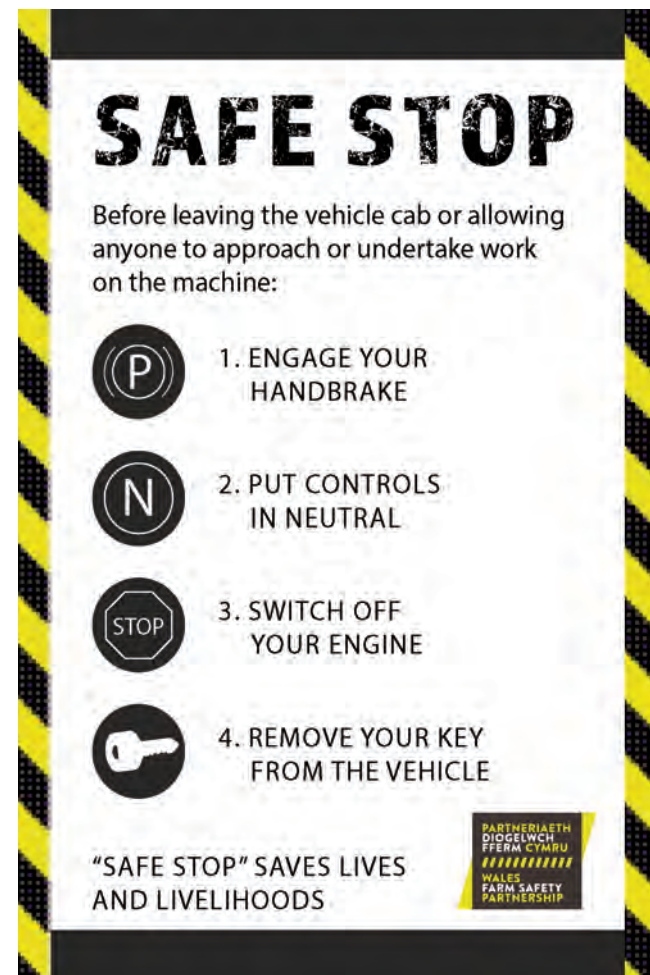
Agriculture continues to be one of the most dangerous occupations and we must make every effort to address our poor farm safety record. Below are some guidance points from the HSE, specifically related to the two fatalities mentioned here. On behalf of the industry, we implore you - be safe, follow the guidance and come home at the end of the day.

Being run over by farm vehicles and implements is a major cause of death and serious injury in farming

- Before leaving the driver's seat/operating position - follow the safe stop procedure: Hand brake on; Controls to neutral or safe; Engine switched off; Key removed.
- Never get on or off moving farm vehicles and don't drive tractors unless they are properly maintained and safe.
- Never use a tractor or other machinery unless you have been trained.
- Work should be planned to keep people separate from moving tractors, machinery and other farm vehicles.
- Never stand in the line of travel of a tractor or machine.
- Do not place any part of your body in between a moving tractor or machine or tractors with any mounted or attached implements.
- Communication between drivers and others is essential to ensure drivers can see other people and know what they are doing.

Work should be planned to keep people away from moving vehicles

- Vehicle routes should be away from pedestrian routes/doors/gates/exits so people are not put at risk.
- Drivers must be made aware if there may be pedestrians in the work area, and make sure they can see pedestrians and vice versa.
- Drivers must be trained.
- Ensure mirrors are fitted, properly adjusted and clean.
- Pedestrians should follow designated safe routes and ideally wear hi-vis clothing.
- All traffic routes should be properly maintained and adequately lit.
- Never approach or walk behind or beside a moving vehicle. If you must approach, attract the driver's attention first (when safe) and get them to stop.



British Farming Awards 2021 launches

2021 award categories:

- Agricultural Student of the Year (sponsored by Kubota)
- Agri-Tech Innovator of the Year
- Arable Innovator of the Year (sponsored by Oxbury Bank)
- Beef Innovator of the Year (sponsored by ABP Food Group)
- Contractor Innovator of the Year (sponsored by Kuhn)
- Dairy Innovator of the Year (sponsored by KW)
- Digital Innovator of the Year
- Diversification Innovator of the Year (small to medium) sponsored by CLA
- Diversification Innovator of the Year (large)
- Family Farming Business of the Year (sponsored by Morrisons)
- Farm Worker of the Year (sponsored by Isuzu)
- Farmers Guardian Farming Hero (sponsored by Fullwood Packo)
- Machinery Innovator of the Year
- New Entrant Award: Against the Odds (sponsored by ABN)
- Outstanding Contribution to British Agriculture (Sponsored by NSF International)
- Sheep Innovator of the Year
- Sustainability Innovator of the Year (sponsored by Alltech)

AS consumer trust and confidence in British farmers reaches a record high, The British Farming Awards 2021 returns to salute the fantastic work taking place across UK agriculture.

Back for its ninth year, this year's event is brought to you by AgriBriefing, the parent company of Farmers Guardian, Arable Farming and Dairy Farmer, and is supported by Morrisons.

The awards celebrate the diversity, innovation and adaptability of farmers across all sectors, no matter the size and scale of their business.

Alongside farming's core sectors - dairy, beef, sheep, arable and machinery - there is also recognition in other valued groups such as family farms, students, new entrants, agri-tech and the huge number of diversifications, which are now so crucial to many businesses.

New to the event this year is the introduction of a new award, Sustainability Innovator of the Year. The award recognises farmers who are farming in harmony with the environment and working to safeguard the future of our shared planet for generations to come.

The awards also welcome nominations of businesses who have introduced new ways of working whether that be reinventing their business following Covid-19, adopting new technology to improve efficiencies, developing new routes to market or educating the general public about the role of farming to the UK's supply chain and countryside stewardship.

Sophie Throup, Morrisons Head of Agriculture, Fisheries and Sustainable Sourcing, said: "It's been a hugely challenging 12 months with farmers and foodmakers across the country putting in a tremendous amount of hard work, innovation, care and skill to keep producing the great British food we eat and enjoy.

"Taking time to recognise, celebrate and be inspired by everyone in our industry and community who do so much means we're proud once again to support The British Farming Awards."

Ben Briggs, Editor of Farmers Guardian, said: "This year's BFAs retain a greater urgency than ever before as the industry seeks to recognise the innovation and dedication that has powered agriculture at such a crucial time.

"Throughout the pandemic it is farmers who have fed the nation, shaped the outdoor spaces people have used for recreation, provided rural holiday lets for escapism, and, simply, continued to build businesses which have grown and flourished during this unprecedented time.

"Counterintuitively, the past 12 months have been a time for growth and expansion for many farm businesses. That is why we want to hear your stories and thus give your businesses, ideas and people the recognition they truly deserve."

The closing date for entries is June 25. For more information on applying or to nominate an individual visit www.britishfarmingawards.co.uk



supported by



Tackling air pollution from agriculture

by Dr William Stiles, Farming Connect Knowledge Exchange Hub, IBERS, Aberystwyth University



AIR pollution is currently the single biggest environmental health risk globally. Current levels of air pollution in Wales constitute a major health risk, which is considered by public health Wales to be second only to smoking in terms of its impact.

Air pollution is emitted from a range of sources including industry, transport, power generation, and agriculture. Materials that contribute to air pollution are varied and can originate from a range of natural and man-made sources. Air pollutants can also be formed in the atmosphere after chemical reaction of other primary pollutant materials to form secondary pollutants, including particulate matter.

Natural sources of air pollution include dust or wind-blown soil particles, pollen, salt from the sea, and others. Man-made sources are typically emissions resulting from activities such as the burning of fuels. For agriculture, the primary contribution to air pollution is through the emission of ammonia.

Ammonia originates from the break down and volatilisation of urea. The majority of ammonia emissions from Welsh agriculture are the result of livestock management or the use of fertiliser. The biggest source in Wales is cattle manure management, which contributes 41% of agricultural emissions. Other key sources of ammonia include manure applied to soils (26.8%), grazing animal excreta (14.5%), and inorganic fertiliser usage (10.2%).

The emissions of ammonia from agricultural activities presents a range of challenges in terms of environmental impact. Emitted as a gas, ammonia can travel large distances and be can result in various environmental effects including eutrophication, acidification, and direct toxicity. In addition, when in the atmosphere, ammonia can combine with other materials to become secondary particulate

matter, which is a major air pollutant with the potential to severely damage human health and wellbeing.

Formation of secondary particulate matter occurs when the emission products from different pollutant sources, such as industry and transport, combine to form inorganic aerosols. As an example, ammonia from agriculture can combine with other materials to form ammonium compounds, including ammonium sulphate ((NH₄)₂SO₄), ammonium bisulphate (NH₄HSO₄), and ammonium nitrate (NH₄NO₃). Once in this state, this material can penetrate deep into the lungs and cause a range of issues, including respiratory and cardiovascular illness and mortality.

Thus, reducing the emission of ammonia is a key goal for Welsh agriculture in order to reduce air pollution, which will reduce the impact to human health, and environmental degradation.

“Air pollution is emitted from a range of sources including industry, transport, power generation, and agriculture. Materials that contribute to air pollution are varied and can originate from a range of natural and man-made sources.”

WALES LONGEST AND LARGEST SUPPLIER OF 4 DOOR PICK-UPS

FAMILY OWNED & RUN FOR OVER 52 YEARS



66 LAND ROVER DISCOVERY SPORT
SE TD4 AUTOMATIC, 2L, LOCALLY OWNED, LEATHER, HEATED SEATS, SAT NAV, ETC,
45,200 MILES!!

LAND ROVER COMMERCIALS

- 14 DEFENDER, 110 LWB COUNTY, DOUBLE CAB, ONE OWNER FROM NEW, SERVICE HISTORY.
- 63 DEFENDER, 90 HARD TOP, ONE OWNER + DEMO, 27,000 MILES.
- 06 DEFENDER, TD5 SWB, HARD TOP, NEW MOT, LOCALLY OWNED.
- N DEFENDER, 90, LOCAL, ONLY 77,000 MILES WITH NEWLY FITTED GALVANIZED CHASSIS, **NO VAT.**

TOYOTA PICKUPS - SUPPLIED BY US

- 21 HILUX INVINCIBLE 3.5 TONNE TOWING, 5 YEAR WARRANTY.
- 65 HILUX INVINCIBLE 3.0 ONLY 19,000 MILES.
- 62 HILUX HL2, ONE OWNER + DEMO, ONLY 48,000 MILES.

OTHER

- 17 MITSUBISHI SHOGUN, SG2 SWB, AUTO, ONE OWNER, ONLY 21,000 MILES, RARE BIRD, WARRANTY UNTIL 2022.
- 16 HYUNDAI TUCSON, PREMIUM, CRDI AUTO, FULL SERVICE HISTORY, ONLY 37,400 MILES.
- 63 RANGE ROVER, VOGUE TDV6, LOCALLY OWNED, NEW ENGINE FITTED AND HAS WARRANTY UNTIL JAN 2023, UNLIMITED MILEAGE.
- 13 KIA SPORTAGE, 2.0 CRDI, LOCALLY OWNED.
- 61 HONDA CR-V, 2.2 EX, AUTO, ONE LOCAL OWNER.
- 57 JEEP PATRIOT, LOCAL, LOW MILES, BLUE.

FLYING THE SSANGYONG FLAG SINCE 2003

- SSANGYONG
- 17 REXTON, W 2.2 ELX AUTO, BALANCE OF 5 YEAR WARRANTY, HIGHEST SPEC, MINT CONDITION.
- 66 TIVOLI, ELX 1.6 DIESEL, ONLY 13,000 MILES, WITH SERVICE HISTORY, £30 A YEAR TAX.
- 16 TIVOLI, 1.6 DIESEL IN RED, ONE LADY OWNER, FSH, £30 TAX.
- 14 REXTON, W, 2L, ONE LOCAL OWNER, 7 SEATS, LOW MILES.
- 63 KORANDO, EX AUTO, ONE LOCAL OWNER, 31,000 MILES.
- 07 REXTON RX 270 SE 5, LOCAL SILVER.

High Noon Garage Whitemill
Carmarthen Carms SA32 7EN

OPEN 7 DAYS A WEEK
5 MINUTES FROM CARMARTHEN

**01267
290 900**

www.GERAINTJONES4X4.co.uk

WE OFFER
• SALES • SERVICING • PARTS & ACCESSORIES

SALES TEAM ASK FOR:
Marie or Gavin

STORES & SERVICE TEAM ASK FOR:
Beryl, Marie or Gavin



NEW KIOTI MECHRON,
4 DOOR & 6 SEATER 4X4
WITH TIPPER, DIESEL, IN STOCK.
2 YEAR WARRANTY ON ALL NEW.
NEW KIOTI MECHRON, 2 DOOR.

INDEPENDENT TOYOTA HILUX SPECIALIST

Models portrayed for illustration purposes only.
Details correct at time of going to press.
All commercials +Vat @20%.

OUR SHOWROOM DOORS ARE OPEN!

ALL COVID-19 GUIDELINES ARE BEING FOLLOWED.



2 METERS
SOCIAL
DISTANCING



TRACK
&
TRACE



MASKS
MUST
BE WORN

OPENING HOURS
MONDAY - FRIDAY 8.30 - 5.30
SATURDAY 8.30 - 3.00
OUT OF HOURS APPOINTMENTS AVAILABLE

4 DOOR PICK-UPS WITH VAT @ 20%

- FORD RANGER, WILDTRAK, 2.0, 10 SPEED AUTO, FULLY LOADED WITH EXTRAS.
- 19 MITSUBISHI WARRIOR, ONLY 19,000 MILES, WARRANTY UNTIL 2023, AS NEW.
- 70 NISSAN NAVARA NP300 TEKNA, MANUAL, 5 YEAR WARRANTY, 3.5 TONNE TOWING CAPACITY.
- 65 FORD RANGER, LTD, 2.2 ONLY 12,600 MILES.
- 14 VOLKSWAGEN AMAROK CANYON, A32 SPECIAL EDITION 28,000 MILES, ONE OWNER, SERVICE HISTORY.
- 14 NISSAN NAVARA, TEKNA, ONE OWNER + OUR DEMO, FULL SERVICE HISTORY, **ONLY 36,000 MILES.**
- 14 SSANGYONG KORANDO, SPORT EX, ONLY 46,000 MILES, **NO VAT.**
- 61 ISUZU RODEO, 3.0 TD DENVER MAX, **ONLY 39,000 MILES,** ONE LOCAL OWNER + DEMO.



HOME OWNERS - TENANTS - LANDLORDS - LETTING AGENTS

ARE YOU FED UP

WITH HIGH ENERGY COSTS?

STORAGE HEATERS - ELECTRIC ROOM HEATERS
LPG BOILERS - AGAs - RAYBURNS, ETC.

WE CAN HELP YOU ACCESS ECO3 FUNDING TO EITHER UPGRADE YOUR CURRENT HEATING SYSTEM OR HELP YOU INSULATE YOUR HOME AND MAKE IT MORE ENERGY EFFICIENT.

WE ARE OFFERING A FREE ENERGY EFFICIENCY HEALTH CHECK TO PROPERTIES IN THE PEMBROKESHIRE, CARMARTHENSHIRE AND CEREDIGION AREAS.

QUALIFY EITHER THROUGH YOUR POSTCODE. PLEASE NOTE DIFFERENT LOCAL AUTHORITIES HAVE DIFFERENT CRITERIA OR IF YOU ARE IN A RECEIPT OF A QUALIFYING INCOME BASED BENEFIT AND WANT TO FIND OUT HOW TO REDUCE YOUR ENERGY SPEND PLEASE USE THE CONTACT DETAILS BELOW.

IF YOU ARE HEATING YOUR PROPERTY WITH ELECTRIC - THAT IS ELECTRIC BOILER - STORAGE HEATERS - GROUND OR AIR SOURCE HEAT PUMP WE NOW HAVE PARTIAL FUNDING FOR SOLAR PV (ROOF ORIENTATION CRITERIA TO MEET) - AN EXCELLENT OPPORTUNITY TO SAVE ON YOUR ENERGY COSTS

01656 337618

07580 471901

greenerfuturesltd@gmail.com

www.greenerfuturesinltd.co.uk



We take a Holistic approach

with our energy efficiency health checks so it's always insulation first, then heating.

- Loft - Room in Roof - Internal or External Wall Insulation
- Heating
- First time Central Heating Grants
- Renewables - Ground Source & Air Source Heat Pumps - Solar pv
- Lpg Boilers

FIND OUT IF YOU'RE ELIGIBLE FOR A FREE BOILER/1ST TIME CENTRAL HEATING FUNDING



01656 337618

07580 471901

greenerfuturesltd@gmail.com

www.greenerfuturesinltd.co.uk