



Llais ffermwr Cymru

YTIR

the voice of Welsh farming

£2.50



Mourning the passing of gifted member

page 2



Big Farmland Bird Count - we got involved

page 11



Beca on a mission to raise farm safety profile

page 22

WEATHER PLAYING HAVOC

by Glyn Roberts, FUW President

FEBRUARY has been tough for us as farmers. The weather has well and truly played havoc with us all and I doubt there are many who have not come across the heartbreaking images of flooded fields, livestock drowning, and livelihoods, if not in ruin, at least badly affected.

The winter storms we have witnessed have rightly been described as the worst seen over recent years. With the weather not likely to improve any time soon, the fields won't have time to dry out before being hit with the next load of rain.

Our industry is hugely affected by flooding and is always under the potential threat from rivers and coastal areas, such is the nature of working with nature.

Sadly, this sort of weather pattern is not a one-off and the effects of climate change are being felt across the world. What this recent flooding has highlighted again though is that farmland - as well as urban property - has to be protected.

When it comes to flood prevention, our industry really should fall next in line to urban businesses and households. Indeed, rural areas and agricultural land, which we use for food production, and which provides a haven for wildlife, birds and many other species, should not be threatened like this.

Farming by its very nature is responsible for the management and protection of the landscape and the environment as well as the production of food for an ever-increasing population.

So to see our land and livestock drowning, is bad news for all of us. To add insult to injury the recovery of that land, which includes the removal of debris, fencing and reseeded, is a cost that falls on us.

We all try our best to combat the effects of climate change, with many of our farmers participating in agri-environment schemes such as Glastir and Glastir Advanced.

Through national participation in habitat schemes, farmers are grazing moorland to prescribed stocking levels,

looking after hedgerows, planting trees, taking care of wildlife corridors and creating streamside corridors on improved land, and as well as protecting biodiversity and storing carbon - one of the multiple benefits from this land management is the slowing down of water movement from the uplands and hills of Wales.

The thing to remember is that as farmers we can only do so much on our own. What is needed is better cooperation and an understanding that flood prevention takes more than just a farmer.

We must of course take responsibility and strive for efficiency in producing food in a sustainable way but fighting flooding and climate change can't be a stand alone effort.

For those who have been affected by the floods, I would urge you to seek help. The Royal Agricultural Benevolent Institution has released an initial £50k from its Crisis Fund to provide emergency grants to farming families via its Helpline - 0808 281 9490.

Having already provided around £75k of emergency grant support to those affected by extreme wet weather this autumn/winter, they know how devastating the impacts are for farmers in both the immediate and longer-term. Simplifying their criteria and application process means they can fast-track immediate assistance to affected farmers.

These funds, whilst a relatively small element of the help they expect to provide over the longer-term to those affected, can make a real difference dealing with urgent priorities - and help to alleviate pressing financial worries, allowing you to concentrate on dealing with the immediate impacts of the extreme weather.

On a final note this month - please remember that if it all gets too much for you, or you think a family member is at breaking point - speak to someone.

There is absolutely no shame in not being ok. We are resilient but even the toughest of us, sometimes need a bit of help. Remember, it's ok not to be ok!

Samaritans: 116 123 or Welsh Language Line (Llinell Gymraeg): 0808 164 0123

DPJ Foundation: Call 0800 587 4262 or if talking on the phone isn't your thing you can now text if you would like support. Text: 07860 048799

Mind Cymru: Call 0300 123 3393, email info@mind.org.uk or text 86463

FCN: 03000 111 999 **RABI:** 0808 281 9490

Tir Dewi: 0800 121 4722

INSULATION-HEATING-RENEWABLE ENERGY GRANTS & FUNDING

Here at greener futures we want to help you access grants that are available to make your homes more energy efficient which will help you drive down your energy costs.



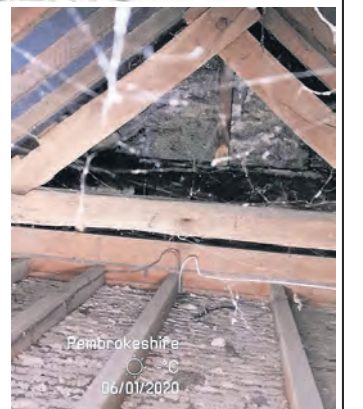
YOU DO NOT HAVE TO BE ON BENEFITS TO APPLY FOR THESE OWNER OCCUPIERS & TENANTS LANDLORDS - ESTATE & LAND AGENTS

INSULATION

- ✓ LOFT (UNDER 100MM CAN BE TOPPED UP TO 300MM)
- ✓ ROOM IN ROOF
- ✓ INTERNAL & EXTERNAL
- ✓ UNDERFLOOR

HEATING & RENEWABLES

- ✓ BOILER UPGRADES (OWNER OCCUPIERS ONLY)
- ✓ ROOM HEATERS TO HIGH RETENTION STORAGE HEATERS
- ✓ SOLAR PV (PART FUNDED IF YOUR ON BOTTLED OR ELECTRIC HEATING)
- ✓ FIRST TIME CENTRAL HEATING GRANTS
- ✓ GROUND & AIR SOURCE HEAT PUMPS
- ✓ L.P.G BOILERS



We are currently working within the rural & farming communities, all enquiries are welcome if you have friends, relatives who may require help then simply pick up the phone.

Pick up the phone or email us at greenerfuturesltd@gmail.com all applications are subject to survey and meet the local authority criteria.

Mobile: 07580471901 [f](https://www.facebook.com/greenerfuturesltd) [i](https://www.instagram.com/greenerfuturesltd) [l](https://www.linkedin.com/company/greenerfuturesltd)

FUW Ltd Annual General Meeting

March 10 2020, 12.30pm

William Davies Conference Suite, IBERS, Aberystwyth

For all members to receive, consider and adopt the audited financial statements for the period ended March 31 2019, together with the Reports of the Directors and the Auditors thereon, and to appoint/reappoint auditors for the financial year ended March 31 2020

Any other business of which 21 days clear days' notice shall have been given to the Directors by any member entitled to vote at such meetings

Any member of the Union may attend the FUW Ltd AGM, but only members of Grand Council may vote

Grand Council to follow



Cyfarfod Cyffredinol Blynnyddol FUW Ltd

Mawrth 10 2020, 12.30yp

Ystafell William Davies, IBERS, Aberystwyth

I bob aelod dderbyn, ystyried a mabwysiadu'r gyfriflen ariannol wedi eu harchwilio ar gyfer y cyfnod a ddiweddir 31ain o Fawrth 2019, ynghyd ac adroddiadau'r Cyfarwyddwyr a'r Archwilwyr, ac i benodi/ail benodi Archwilwyr ar gyfer y cyfnod a ddiweddir Mawrth 31 2020

Unrhyw fusnes arall sydd wedi ei gyflwyno i'r Cyfarwyddwyr gydag o leiaf 21 diwrnod clir o rybudd gan unrhyw aelod sydd â hawl i bleidleisio yn y cyfarfod hwnnw

All unrhyw aelod o'r Undeb fynychu CCB FUW Ltd, ond dim ond aelodau'r Cyngor bydd yn gallu pleidleisio

Cyngor UAC i'w ddilyn

Planning is key during lambing

by Frances Jones BVetMed MRCVS - a veterinary surgeon qualified from the Royal Veterinary College in 2007. In the November of that year she took a position in Aeron Vets and has been enjoying mixed practice in Ceredigion ever since. Here she reminds us of the essentials during lambing time...

THE Six Nations is underway, days are lengthening and the weather is dodgy: it must be lambing time! Although always happening at this time of year, the main event seems to sneak up without warning.

How can we be ready for the most important time in the sheep farming calendar?

To paraphrase the British Army, "Proper planning and preparation prevents poor performance". We need to ensure all the necessities are on farm before lambs are arriving thick and fast -

Date	Ewe No	Jag charge	Grand	Live	Dead	Remarks	Date	Ewe No	Jag charge	Grand	Live	Dead	Comments
14/2/20	126	✓	2	2									
14/2/20	127	✓	2	2									
15/2/20	128	✓	1	1		+triplet							
15/2/20	129	✓	2	2									
15/2/20	130	✓	2	2									
15/2/20	131	✓	2	2									
15/2/20	132	✓	2	2									
15/2/20	133	✓	2	2									
15/2/20	134	✓	2	2		gold quarter							
15/2/20	135	✓	2	2									
15/2/20	136	✓	2	2		not adopt as per 137							
15/2/20	137	✓	2	2									
16/2/20	138	✓	2	2									
16/2/20	139	✓	2	2		single lamb by chair							
16/2/20	140	✓	2	2									
16/2/20	141	✓	2	2									
16/2/20	142	✓	2	2									
16/2/20	143	✓	2	2									
17/2/20	144	✓	2	2		original							



treatment for twin lamb, AI gloves to allow clean and hygienic assistance of ewes, lambing ropes, a lambing snare, iodine for dressing navels, a stomach tube and syringe that fits it, artificial colostrum, artificial milk powder, feeding bottles, teats, disinfectant for keeping the equipment in this list clean.

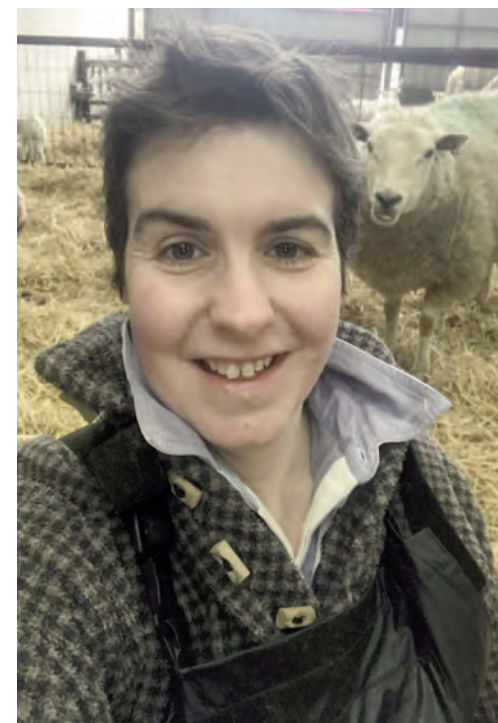
It is a good idea to keep a laminated sheet with the correct ratio of replacer to water where it is prepared so that milk is always made to a consistent formula. As we prepare for lambing it is also a good idea to check that the infra-red lamps are working, have bulbs that fit them and that the farm is carrying a spare.

Does everybody know what procedures to follow when ewes lamb?

With multiple staff involved at lambing (or just the odd one or two who become increasingly tired), it can be extremely beneficial to have a written protocol of what needs to be done to what, when and under what circumstances. For example, how long do you leave a ewe without intervening once the water bag is out? Under what circumstances do lambs receive artificial colostrum and how quickly? In the event that a ewe is unwell, is it documented what medicines they should receive and at what dose rate? Your vet will be happy to help draft some of these protocols - a standard operating procedure will save lives at lambing.

An invaluable source of information for this lambing and those to come is an inventory of lambing. A notebook detailing the date of lambing, how many lambs the ewe was scanned with, how many live births, how many dead births and comments on the ewe or lamb (tough lambing, udder condition, mis-mothering, abortion, reasons to cull etc) can be used both by you to spot any patterns in conditions/diseases and by your vet in your Annual Livestock Health and Welfare Review.

May it be a dry, sunny and prosperous lambing season for us all.



Mourning the passing of gifted member Evan R

THE FUW is mourning the passing of Union Life Member, Evan R Thomas, (pictured right), from Carmarthen, who has been described as one of the most gifted and intellectual since the formation of the FUW.

Responding to the news FUW President Glyn Roberts said: "The FUW has lost a farming stalwart. I regard Mr Thomas, or Evan R, as everyone knew him, as probably the most gifted and intellectually able member since the FUW was formed during 1955. He was a remarkable and wonderful man. He literally gave his life to the FUW and to Welsh agriculture. His contribution has been exceptional and he served on a very large number of committees."

Mr Thomas served for 12 years on the Secretary of State's Agriculture Advisory Panel. He was a past member, and past Chairman of Trauscoed Experimental Husbandry Farm Management and he was the Chairman at the time of amalgamation with Pwllpeiran Experimental Husbandry Farm.

"He was also a member of the Wales LFA Appeals Panel and a member of the Dairy Quotas Panel. His contribution extended beyond agriculture and he served on the BBC Agricultural Advisory Committee, the Post Office Users Council for Wales and he was a past Chairman of his local branch of the British Legion," added Glyn.

The late Evan R was also the very first member of the FUW to win a contested election against a NFU sponsored candidate on to the Milk Marketing Board for South Wales



during 1962. This was a very significant landmark in the history of the FUW and it showed that the Union could win the support of farmers in Wales at the ballot box. Evan R led the way and this was a huge success.

"Many of us will remember Evan R as a strong, determined and powerful speaker at FUW meetings of our Grand Council - the FUW's governing body.

"Over the years we have invited many politicians to address Grand Council, and the majority of them have suffered the forensic and strong challenge to their address from Evan R. I will always remember, with affection, seeing Evan R on his feet, papers in hand, challenging these speakers in a very robust, direct way and always with great effectiveness," added Glyn.

Evan R was awarded the MBE for Services to Agriculture during 1985.

Referring to the book published by Evan R, with co author Eiluned Rees, 'Service & Survival: Llanstephan, Llanybri & Llangynog during World War 1', the Union President said: "Not many people publish their first book when they are 90 years old! He was a remarkable man, a wonderful friend of the FUW and of Welsh agriculture and very able. Whilst we all mourn his passing, I will always be grateful and proud that I knew him and that I had the pleasure of working with him."

Evan R is survived by his wife, Olga and three daughters, Kathryn, Ingrid and Rosalie.

Oil storage regulations - final reminder

OIL storage regulations (OSR) require anyone in Wales who has the capacity to store more than 200 litres of oil for their home or business to install an integrally-bunded tank to a required standard for preventing leakage or pollution.

Existing tanks at significant risk (within 10 metres of surface water or wetland, or 50 metres of a borehole or well), have had to comply with the regulations since March 15 2018.

All new or replacement tanks (since March 15 2016) must comply with the regulations from the date of installation. Existing tanks which are not at a significant risk to water will have to comply by March 15 2020.

The regulations cover all types of oil (except bitumen) and liquids including petrol, diesel, vegetable oils, bio-fuels, synthetic and mineral oils, and waste oil. ALL domestic oil storage tanks i.e. for heating oil are exempt until the tanks are replaced. A farmhouse with occasional office use is categorised as domestic and is exempt until replaced, whereas buildings converted into holiday lets are considered as business and therefore must comply.

The OSR apply to the storage of any oil on farms including the storage of oil used for heating and/or power on premises as defined by the Agriculture Act 1947, therefore red diesel tanks must comply with the regulations. Oil in use within farm machinery is exempt. Oil stored within a building must also comply with the regulations, however in some cases, such buildings could serve as its own secondary containment (e.g. impermeable walls and sleeping policemen for preventing losses).

For one tank, mobile bowser or Intermediate Bulk Container (IBC), the secondary containment must be able to hold 110 per cent of the volume that the container can hold and be able to withstand a total failure of the full tank.

If we have published anything that is factually inaccurate, please contact the editor on 01970 820820 at ytir@fuw.org.uk or at FUW, Llŷs Amaeth, Plas Gogerddan, Aberystwyth, Ceredigion, SY23 3BT and once verified we will correct it here as soon as possible.

South Wales Evening Post is part of Trinity Mirror North West & North Wales Ltd, a subsidiary company of Reach PLC, which is a member of IPSO, the Independent Press Standards Organisation. We adhere to the Editors' Code Of Practice as enforced by IPSO, who are contactable for advice at Independent Press Standards Organisation, Gate House, 1 Farringdon Street, London, EC4M 7LG. Website: <http://www.ipso.co.uk> Telephone: 0300 123 2220; email advice@ipso.co.uk

If you have a complaint concerning a potential breach of the Code of Practice, we will deal with your complaint directly or IPSO can refer your complaint to us. Please go to <https://www.reachplc.com/how-to-complain> where you can view our Complaints Policy and Procedure. A "How To Complain" pack is also available by writing to the Legal and Compliance Department, Reach PLC, One Canada Square, Canary Wharf, London, E14 5AP.

Sut i gysylltu gyda Y Tir / How to contact Y Tir

Golygydd/Editor: Nia Davies-Jones - ytir@fuw.org.uk

Golygydd y Gymraeg/Welsh Editor: Angharad Evans - angharad.evans@fuw.org.uk

Swyddog y Wasg UAC/FUW Press Officer: Anne Dunn - anne.dunn@fuw.org.uk

www.fuw.org.uk



Ydych chi'n gwybod gwerth eich aelodaeth?



Gwerth Aelodaeth FUW
Petai chi'n rhoi gwerth ar bob un o'r buddion aelodaeth

Ffurflen Taliad Sengl	£300
Llythyr Apêl Cosb	£150
Symudiadau BCMS x30	£150
Cyngor Ymholiad TB	£50 yr awr
Rheoli Fy Nhir	£50 yr awr
Stocrestr Defaid Flynyddol	£75
Rheoli CPH	£100
Papur Newydd Y Tir	£25

Cyfanswm £900
TAWELWCH MEDDWL AMHRISIADWY

(Prisiau yn seiliedig ar fferm 100 erw)

Cynrychiolaeth a Lobïo

Mae eich aelodaeth yn sicrhau bod ein Tîm Polisi a Thîm Llywyddol yn lleisio'ch barn chi, o'r cyngor lleol i Lywodraethau cenedlaethol yn ogystal â chyrrff cyhoeddus fel Cyfoeth Naturiol Cymru.

Rydym yn ymgyrchu'n weithredol ac yn annibynnol i hyrwyddo'r buddiannau ffermwyr Cymru.

Ers 1 Ionawr 2020 mae'r tîm polisi wedi treulio dros 280 awr yn mynychu 56 o gyfarfodydd lefel uchel, ac wedi gyrru dros 3500 milltir!

Mae Tîm Polisi FUW hefyd yn cynhyrchu e-fwletin misol yn llawn o'r wybodaeth amaethyddol ddiweddaraf gan gynnwys dyddiadau cau grantiau, y rheolau diweddaraf a mwy!

Bob blwyddyn rydym yn codi arian ar gyfer elusen o ddewis ein Llywydd. Mae'r Wythnos Brecwast Ffermdy ym mis Ionawr 2020 yn unig wedi codi dros £15000 tuag at y DPJ Foundation sy'n helpu i gefnogi materion iechyd meddwl mewn amaethyddiaeth.

Diolch
am fod yn aelod gwerthfawr o FUW
#AmaethAmByth

Peidiwch anghofio am eich gostyngiadau!

Ewch i www.fuw.org.uk
i weld ein holl gynigion
a gostyngiadau
aelodau gwyth



Law



Ar gael nawr i holl aelodau FUW!

JDS MACHINERY .CO.UK VALTRA TAKEUCHI



Massey Ferguson 5465 Dyna-4, 5711 hours approx. 58 plate.

Massey Ferguson 6712s Dyna-4 C/W Loader. 975 hours approx. 3 Spools, Drawbar, Hook and Top link. Passenger seat. 2017

Kubota M7151 Premium. 1600 Hours Approx. Front Linkage PTO. 2017



Kubota M9540 C/W Loader, 3200 hours approx. 2016

Deutz Agrofarm 430, 3991 hours approx. 3 Spools. 2009

Valtra T234 Active, 915 hours approx. 4 Spools, Front PTO and linkage. 2018



Takeuchi TL250 Skidsteer. 1099 hours approx. 2012

Takeuchi TB219 Cab. 1764 hours approx. complete with 3 buckets and quick hitch. 2014

Komatsu PC80mr, 5231 hours approx. complete with 3 buckets and quick hitch. 2011

Herbst 28' Low Loader, 27 Tonne, Tri Axle.

Farma FH100 Flail Head



Phone: 01559 384886 Fax: 01559 384814 Email: sales@jdsmechanery.co.uk

FUW MATTERS

As Easy as ABC

by Alan Davies, FUW Managing Director

AROUND this time last year, we held the first staff conference for a few years. It was a success but I'm pleased to say that it wasn't as successful as the one held this year at the end of January.

Over the course of two days in Aberystwyth, we had all our staff - well over a 100 - together in one room being briefed on the entire Union, and sharing in problem-solving as we seek to continue to improve.

There were excellent presentations from all parts of the business: from the big external influences on the way we work, the plans for business development, the new member services, through to briefings on finance, marketing, press relations, how to get stories into this paper and of course even a bit about Brexit.

At times we all worked together, with some specialist sessions where we split into smaller groups to focus on issues that were only relevant to those attending. But overall one of the key objectives was to get everyone working "as one". This was part of the group vision set out last year, a vision to be: "The Union, United, As One" and I'm pleased to say that I truly think that it is working.

It's really important that we recognise that all our staff are working here in order to play a part in delivering the overall vision of the Union: "Sustainable, Thriving Family Farms". Whether that is delivered by a Union member of staff helping with SAF, or by an insurance Account Executive ensuring that life insurance is in place, it's all about sustainable, thriving members.

And by working together we can deliver better results. The collective knowledge of over 100 people in a room is huge and tapping into that is critical for any business. It's

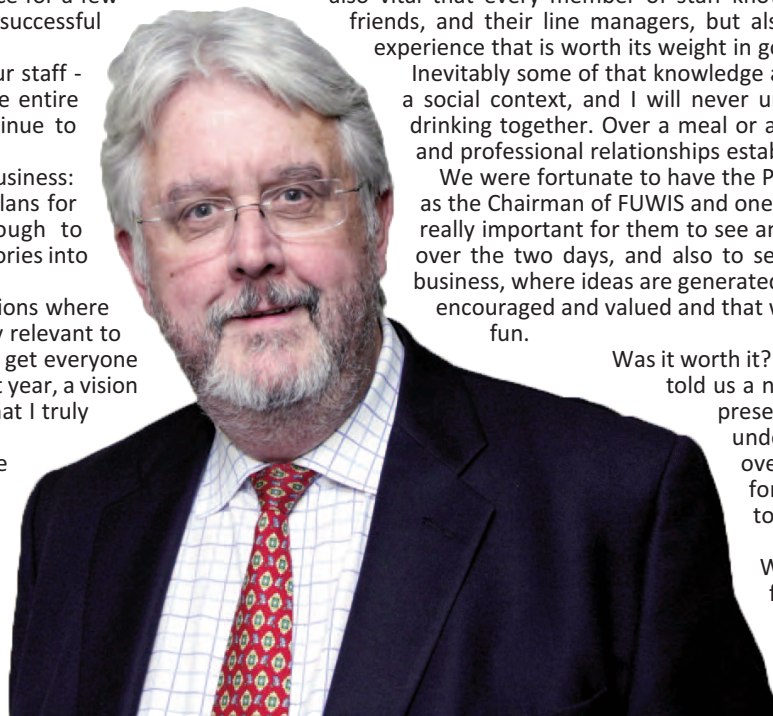
also vital that every member of staff knows that they are supported not just by their friends, and their line managers, but also by an internal network of knowledge and experience that is worth its weight in gold.

Inevitably some of that knowledge and some of those relationships are built up in a social context, and I will never underestimate the value of people eating and drinking together. Over a meal or a pint, much valuable knowledge is exchanged and professional relationships established. And, of course, older ones refreshed!

We were fortunate to have the President and Deputy President with us, as well as the Chairman of FUWIS and one of their Non-Executive Directors. I think it was really important for them to see and hear much of the great work that was done over the two days, and also to see that this is a business that is running as a business, where ideas are generated at all levels, where thoughts and opinions are encouraged and valued and that work - whilst hard and demanding - can also be fun.

Was it worth it? Of course, it was: our survey of staff at the end told us a number of things: less than 6 per cent of those present reported that they had not gained a better understanding of the group as a whole. And well over 90 per cent thought that we had moved forward as an organisation and are stronger together.

That's both pleasing and also it's a challenge. We are definitely on a good course, but the feedback we got and the flood of ideas we released in some of our sessions show that there is still much to do. But I know it's achievable because we are doing it: United, As One.



Enillwch
daleb Argos
gwerth £50!

Cystadleuaeth ffotograffiaeth plant

Ydych chi'n ffotograffydd brwd?

Dyma'r gystadleuaeth i chi!

Rhowch syniad i ni o beth sy'n digwydd ar y fferm yn ystod y Gwanwyn trwy lens eich camera!

Hoffech chi ennill taleb Argos gwerth £50 a chael eich ffotograff ar y thema 'Ffermio yn y Gwanwyn' wedi'i argraffu yn Y Tir?

Y cyfan sy'n rhaid i chi ei wneud yw e-bostio'ch ffotograff i ytir@fuw.org.uk erbyn Mai 20fed

Categori oedran - 8 - 14 oed

Pob lwc!

Y Rheolau

- 1 Rhaid i'r llun gael ei dynnu gan yr un sy'n cymryd rhan yn y gystadleuaeth.
- 2 Dim ond delweddau digidol y gallwn eu derbyn.
- 3 Sicrhewch fod maint ffeil pob llun o leiaf 1Mb a'i fod ar ffurf JPEG.
- 4 Nodwch eich enw, cyfeiriad a dyddiad geni gyda phob ymgais.
- 5 Bydd gan FUW yr hawl i ddefnyddio unrhyw ymgais mewn deunydd marchnata yn y dyfodol.



RESEARCH
PROVEN

Crystalx



EXTRA HIGH ENERGY

THE PERFECT PARTNER FOR LAMBING.

- Stimulates forage intake and digestibility, improving energy intake in late pregnancy
- Reduce the risk of Twin Lamb disease
- Optimises lamb birth weight to ensure healthy, vigorous lambs
- Maximises colostrum quality and lactation performance for improved lamb daily live weight gain
- Costs only 3-5p per ewe per day

+44 016973 32592

info@crystalx-global.com

Find your nearest stockist at crystalx-global.com

Crystalx UK



Free Sales Service for FUW Members

If you have anything to sell - big or small - fill in the coupon and for a FREE ADVERTISEMENT send it to:

Y Tir, Plas Gogerddan, Aberystwyth, SY23 3BT
or email it to : ytir@fuw.org.uk

Entries must be confined to 25 words and be received by:

March 20 2020

FOR SALE	WANTED	LIVESTOCK FOR SALE
HOLIDAYS	FARMS FOR SALE	MISCELLANEOUS
Name		
Address		
Telephone number		

PLEASE NOTE: FREE ADVERTISEMENTS ARE FOR
FUW MEMBERS ONLY AND NOT FOR COMMERCIAL TRADERS

Membership number:

FOR SALE

MF 6270 DYNA 4; only 2,500hrs. 04 reg, very good condition. Surplus to requirement.

Tel: 01654 702872.

GENUINE MASSEY 50B REAR BUCKETS; 2x2ft 1x3ft - £80 each. Nuffield 10/60 front axle leyland pick-up hitch. 100L LPG tank and conversion kit for vehicle - £80.

Tel: 01974 272489.

SUZUKI VITARA JLX OFF ROAD TYRES; £1,500, good for lambing. Tel: 07929 877248.

OLD ORNAMENTAL CHINA CABINET; dark varnish, 4 bevelled mirrors with glass fronted cupboard. Good condition, buyer collects - £30.

Tel: 01570 470629.

1 S/H PLASTIC FUEL TANK; in excellent

condition, 2,500 litres. Tel: 01650 511282.

FODDER BEET; cleaned, delivered all areas. Tel: 01691 777785 / 07802 680687.

FLAT ROLLER WATER FILLED MOWED CHAIN HARROW; Zig zag mounted harrow, rauch fertiliser spreader, 7ft strimech bucket. Tel: 01348 881212 / 07779 921934.

WANTED

LAMBING ASSISTANT DAYTIME HOURS; April 1st for 4 weeks. Own transport essential.

Small flock - 65 ewes Texel cross Lley. Locaton - Rhos near Llandysul.

Contact Liz Coomber for more information on 01559 418 701 / 07838 424 537.

LIVESTOCK FOR SALE

HEREFORD BULL; Quality homebred pedigree polled bulls. Easycalving and quiet. www.trefochlyd-polledherefords.co.uk Tel: 07817 995903.

HOLIDAYS

CROESO CYNNES CYMREIG; mewn Gwely a Brecwast yn Ffermdy Llwyn Mafon Isaf yn ardal Crickieth Eryri. www.llwynmafonisaf.co.uk - Cysylltwch â Ffion. Ffôn: 01766 530618/07503 192994.

LUXURY B&B IN NORTH PEMBROKESHIRE; on livestock farm with good choice of breakfasts. Warm Welsh welcome awaits you. Tel: 07816 125022.

Gofynnwch am help

gan Glyn Roberts, Llywydd UAC

MAE mis Chwefror wedi bod yn anodd i ni fel ffermwyr. Mae'r tywydd wedi creu helynt i ni gyd ac rydym wedi gweld delweddau torcalonnus o gaeau dan ddŵr, da byw yn boddi, a bywoliaethau wedi eu heffeithio'n wael, os nad wedi cael eu dinistrio.

Disgrifiwyd stormydd y gaeaf fel y gwaethaf a welwyd dros y blynyddoedd diwethaf. Gan nad yw'r tywydd yn debygol o wella'n fuan, nid oes gan y caeau amser i sychu cyn cael eu taro gyda'r llwyth nesaf o law.

Mae llifogydd yn effeithio'n fawr ar ein diwydiant ac mae bob amser o dan fygythiad posibl afonydd ac ardaloedd arfordirol, dyna beth yw gweithio gyda natur.

Yn anffodus, nid yw'r math hwn o batrwm tywydd yn rhywbeth unigryw, ac mae effeithiau newid yn yr hinsawdd yn cael eu teimlo ledled y byd. Yr hyn y mae'r llifogydd diweddar wedi pwysleisio eto bod yn rhaid amddiffyn tir fferm - yn ogystal ag eiddo trefol.

O ran atal llifogydd, dylai ein diwydiant hefyd fod ar y rhestr gyda busnesau ac aelwydydd trefol. Yn wir, ni ddylai ardaloedd gwledig a thir amaethyddol, yr ydym yn eu defnyddio i gynhyrchu bwyd, ac sy'n darparu hafan i fywyd gwyllt, adar a llawer o rywogaethau eraill fod o dan fygythiad.

Ffermio sy'n gyfrifol am reoli a diogelu'r dirwedd a'r amgylchedd yn ogystal â chynhyrchu bwyd ar gyfer poblogaeth sy'n cynyddu o hyd.

Felly mae gweld ein tir a'n da byw yn boddi, yn newyddion drwg i bob un ohonom. Ac i waethygu'r sefyllfa, mae adfer y tir hwnnw, sy'n cynnwys clirio'r llanast, ffensio ac ail-hadu, yn gost i ni.

Rydyn ni i gyd yn ceisio ein gorau i frwydro yn erbyn effeithiau newid yn yr hinsawdd, gyda llawer o'n ffermwyr yn cymryd rhan mewn cynlluniau amaeth-amgylcheddol fel Glastir a Glastir Uwch.

Trwy gymryd rhan mewn cynlluniau cynefinoedd, mae ffermwyr yn pori rhostiroedd i'r lefelau stocio penodol, yn gofalu am wrychoedd, yn plannu coed, yn gofalu am goridoriau bywyd gwyllt ac yn creu coridoriau ar lan nentydd

ar dir gwell, yn ogystal â gwarchod bioamrywiaeth a storio carbon - un o fanteision y rheolaeth tir yma yw arafu symudiad dŵr o ucheldiroedd a brynau Cymru.

Dylid cofio, fel ffermwyr, dim ond hyn a hyn allwn ni wneud ar ben ein hunain. Yr hyn sydd ei angen yw cydweithrediad gwell a dealltwriaeth bod atal llifogydd yn fwy na'r ffermwr yn unig. Rhaid i ni, wrth gwrs, gymryd cyfrifoldeb ac ymdrechu i sicrhau effeithlonrwydd wrth gynhyrchu bwyd mewn ffordd gynaliadwy ond ni ddylai ymladd llifogydd a newid yn yr hinsawdd fod yn ymdrech unigol.

I'r rhai sydd wedi cael eu heffeithio gan y llifogydd, rydym yn eich annog i ofyn am help. Mae'r Royal Agricultural Benevolent Institution wedi rhyddhau £50,000 cychwynnol o'i Gronfa Argyfwng i ddarparu grantiau brys i deuluoedd amaethyddol trwy ei Linell Gymorth - 0808 281 9490.

Ar ôl darparu tua £75,000 o gymorth grant brys eisoes i'r rhai sydd wedi dioddef oherwydd y tywydd gwlyb eithafol yn ystod yr hydref/gaeaf, maent yn gwybod pa mor ddinistriol yw'r effeithiau i ffermwyr yn y tymor byr a'r hir tymor. Mae symleiddio eu meini prawf a'u proses ymgeisio yn golygu y gallant gyflymu cymorth ar unwaith i ffermwyr sydd wedi cael eu heffeithio.

Gall y cronfeydd hyn, er yn elfen gymharol fach o'r help y maent yn disgwyl ei ddarparu dros yr hirdymor i'r rhai sydd wedi dioddef, wneud

gwahaniaeth wrth ddelio â blaenoriaethau brys - a helpu i leddfu pryderon ariannol dybryd, gan ganiatáu i chi ganolbwyntio ar ddelio â effeithiau uniongyrchol y tywydd eithafol.

I gloi'r mis hwn - cofiwch, os yw'r cyfan yn mynd yn ormod i chi, neu os ydych chi'n meddwl bod aelod o'r teulu yn fregus - siaradwch â rhywun. Nid oes unrhyw gywilydd o gwbl dros beidio â bod yn iawn. Rydym yn wydn, ond mae hyd yn oed y person cryfaf angen ychydig o help weithiau. Cofiwch, mae'n iawn i beidio bod yn iawn.

This article is in English on the front page: "Weather playing havoc".

Samariaid: 116 123 neu linell Gymraeg: 0808 164 0123.

DPI Foundation: Ffoniwch 0800 587 4262 neu anfonwch neges destun at 07860 048799.

Mind Cymru: Ffoniwch 0300 123 3393, e-bostiwch info@mind.org.uk neu anfonwch neges destun at 86463.

FCN: 03000 111 999.

RABI: 0808 281 9490.

Tir Dewi: 0800 121 4722.

Galaru'r aelod dawnus Evan R



MAE'R FUW yn galaru am Aelod Oes yr Undeb, Evan R Thomas, (*gweler ar y chwith*), o Gaerfyrddin, sydd wedi'i ddisgrifio fel un o'r rhai mwyaf dawnus a deallus ers ffurfio'r FUW.

Wrth ymateb i'r newyddion dywedodd Llywydd FUW, Glyn Roberts: "Mae'r FUW wedi colli un o hoelion wyth ffermio.

"Rwy'n ystyried Mr Thomas, neu Evan R fel roedd pawb yn ei adnabod, fel yr aelod mwyaf dawnus, galluog a deallus ers ffurfio'r FUW yn ystod 1955. Roedd yn ddyn eithriadol a rhyfeddol. Yn llythrennol, rhoddodd ei fywyd i'r FUW ac i amaethyddiaeth yng Nghymru. Mae ei gyfraniad wedi bod yn eithriadol ac mi wasanaethodd ar nifer fawr iawn o bwyllgorau."

Gwasanaethodd Mr Thomas am 12 mlynedd ar Banel Cyngori Amaethyddiaeth yr Ysgrifennydd Gwladol. Roedd yn gyn-aelod, ac yn gyn-Gadeirydd Rheoli Fferm Hwsmonaeth Arbrofol Trawscoed ac ef oedd y Cadeirydd ar adeg uno â Fferm Arbrofol Hwsmonaeth Pwllpeiran.

"Roedd hefyd yn aelod o Banel Apeliadau ALFF Cymru ac yn aelod o Banel Cwotâu Llaeth. Roedd ei gyfraniad yn ymestyn y tu hwnt i amaethyddiaeth a bu'n gwasanaethu ar Bwyllgor Cyngori Amaethyddol y BBC, Cyngor Defnyddwyr y Swyddfa Bost yng Nghymru ac roedd yn gyn-Gadeirydd ei gangen leol o'r Llang Prydeinig," ychwanegodd Glyn.

Y diweddar Evan R hefyd oedd yr aelod cyntaf un o FUW i ennill etholiad yn erbyn ymgeisydd a noddwyd gan NFU ar Fwrdd Marchnata Llaeth De Cymru yn ystod 1962. Roedd hwn yn garreg filltir arwyddocaol iawn yn hanes yr FUW a dangosodd y gallai'r Undeb ennill cefnogaeth ffermwyr yng Nghymru wrth iddynt fwrw pleidlais. Evan R arweiniodd y ffordd ac roedd hyn yn llwyddiant ysgubol.

"Bydd llawer ohonom yn cofio Evan R fel siaradwr cryf, penderfynol a phwerus yng nghyfarfodydd FUW o'n Prif Gyngor - corff llywodraethu FUW. Dros y blynyddoedd rydym wedi gwahodd llawer o wleidyddion i annerch y Prif Gyngor, ac mae'r mwyafrif ohonynt wedi dioddef her ddadleugar a chryf gan Evan R. Byddaf bob amser yn cofio, gydag anwyldeb, gweld Evan R ar ei draed, papurau yn ei law, yn herio'r siaradwyr hyn mewn ffordd gadarn, uniongyrchol ac effeithiol iawn bob amser," ychwanegodd Glyn.

Anrhydeddwyd Evan R gyda MBE am Wasanaethau i Amaethyddiaeth yn ystod 1985. Gan gyfeirio at y llyfr a gyhoeddwyd gan Evan R, gyda'r cydauddwr Eiluned Rees, 'Service & Survival: Llanstephan, Llanybri & Llangynog during World War 1', dywedodd Llywydd yr Undeb: "Nid oes llawer o bobl yn cyhoeddi eu llyfr cyntaf pan fyddant yn 90 oed! Roedd yn ddyn eithriadol, yn ffrind ffyddlon i'r FUW ac i amaethyddiaeth yng Nghymru ac yn alluog iawn. Tra ein bod ni gyd yn ei alaru, byddaf bob amser yn ddiolchgar ac yn falch fy mod wedi ei adnabod a'r pleser o weithio gydag ef."

Goreisir Evan R gan ei wraig, Olga a thair merch, Kathryn, Ingrid a Rosalie.

This article is in English on page 2: "Mourning the passing of gifted member Evan R."

To advertise in the
Sales Section of the
Y Tir and reach a monthly
audience of over 20,000
adults throughout Wales
Contact Rhian Jones
on 01792 545654
or e-mail
rhian.jones@mediawales.co.uk

CORNEL CLECS

“Rwy’n dwlu byw ar y fferm!”

gan Angharad Evans, Golygydd y Gymraeg

YDW! Mi rydw i yn un o’r miloedd o bobl sy’n treulio awr, neu ddwy (neu dair...) ar y cyfryngau cymdeithasol bod dydd! Erbyn hyn pwrpas y cyfryngau cymdeithasol yw rhannu, dysgu, rhyngweithio a marchnata. Ond i chi a fi, ei brif bwrpas yw cadw mewn cysylltiad gyda phobl.

Wrth edrych drwy un o’r sianelau sbel nôl, mi ddes i ar draws rhywbeth diddorol sydd wedi sbarduno’r Cornel Clecs diweddaraf yma. Roedd yr erthygl, gan y *Faithful Farming Family*, yn canolbwyntio ar blant sy’n cael eu geni a’u magu ar fferm, a’r rhinweddau unigryw sy’n perthyn iddynt.

A dyma fi’n dechrau meddwl am hyn, ac wrth gwrs, mae’r esiampl berffaith o dan fy nhrwyn, Ladi Fach Tŷ Ni, sydd ag amaethyddiaeth yn rhedeg yn gryf trwy’i gwythiennau, a hynny o oedran ifanc iawn. Felly pam bod plant fferm mor unigryw? Y peth pwysicaf yw bod y gwersi maent yn dysgu ar y fferm yn datblygu plant i fod yn oedolion anhygoel.

Pan fydd plentyn yn tyfu lan ar fferm, maent yn dysgu am ethneg gwaith. Mae gan bawb ei gyfrifoldeb ac amser penodol i gyflawni tasgu mewn modd effeithiol. Maent wedi dysgu o’i rhieni, a’r teulu estynedig, o doriad gwawr, i fachlud haul, a hynny heb gwyno oherwydd dyma’r unig ffordd o fyw sydd iddynt.

Mae plentyn yn dysgu am fywyd a marwolaeth o oedran ifanc iawn. Gwylio oen bach yn cymryd ei gamau bregus cyntaf, a gweld y siom pan na fydd yr un oen yn goroesi am ba bynnag rheswm. Mae claddu un o’r anifeiliaid anwes yn brofiad amrwd iawn, ond buan iawn daw gobaith newydd yn y gwanwyn gyda’r holl fywyd newydd ar y fferm.

Mae’n bwysig dysgu am aberthau. Yn aml iawn does dim llawer o gyfle i gael diwrnodau allan yn ystod gwyliau hanner tymor y gwanwyn gan fod angen gwylio’r wyna a’r lloia 24/7. Mae babis yr haf yn aml yn gorfod aberthu dathliadau pen-blwydd oherwydd bod angen gwneud y cynhaeaf. Mae’n bosib bod y tadau sy’n godro yn gorfod colli dechrau cyngherddau ysgol gan fod nhw, yn aml, yn dechrau’n gynnar. Mae’n rhaid i’r teulu cyfan aberthu weithiau.

Mae dychymyg byw gan blant y fferm. Treulio oriau tu allan yn creu ac yn adeiladu campwaith allan o ddeunyddiau sbâr, a nabod clos y fferm fel cefn eu llaw. Allan drwy’r dydd, bob dydd, ac yn sbario hanner awr brin i fynd mewn i’r tŷ i gael bwyd.

Oes, mae gan Ladi Fach Tŷ Ni agwedd iach tuag at waith, weithiau wedi gorfod dysgu colli’r oen bach swci oedd mor annwyl iddi, wedi gorfod aberthu rhywbeth rhywbryd - ond does dim ots yn y byd - mi ddaw cyfle eto, ac yn sicr, mae’r dychymyg yn fyw iawn! Rwy’n teimlo’n ffodus iawn, mae dyma ffordd o fyw ein plentyn ni. Efallai na fydd ganddi ffortiwn yn y banc, ond mi fydd ganddi, gobeithio, y rhinweddau pwysicaf mewn bywyd, a hynny diolch i’r fferm.

I gloi, holais i Ladi Fach Tŷ Ni, yw hi’n hoffi bod yn ferch fferm, a dyma’r ateb: “Ydw, ni fydden yn dewis unrhyw fywyd arall, rwy’n dwlu byw ar fferm, mae’n ffordd o fyw!”

This article is available in English on the FUW website - News - Y Tir News - “I love living on a farm!”



Electricity Network Connection Appointments

WESTERN POWER DISTRIBUTION

Serving the Midlands, South West and Wales

FOR WPD CUSTOMERS AND INDEPENDENT CONNECTION PROVIDERS.

Western Power Distribution (WPD) is the electricity distribution network operator (DNO) for South Wales, South West England and the Midlands.

We operate the regional electricity network and provide new connections to homes, businesses and generation sites at voltages from 230 volts to 132,000 volts.

Ahead of applying to us for a new connection and particularly for Generation Connections, our customers and Independent Connection Providers (ICPs) often have questions and want to understand more about the process, timescales, technical matters, consents/legal requirements and possible constraints of making a connection to the network in a particular area.

If you are a landowner, an ICP, developer or community group and you need to discuss your requirements and the connection process, before making an actual application for a new connection to the network, please contact WPD on the relevant number below.

Midlands:
0800 121 4909

South West & Wales:
0800 028 6229

wpdconnectappoint@westernpower.co.uk

Please mention that your enquiry is for **connection appointments** when you call.

For details of our operational area please visit our website www.westernpower.co.uk



FUWIS awards

Brand re-launch



ABOVE LEFT: 2019 FUWIS Business Development award was presented to Dafydd Evans, based in Ceredigion, who has had an exceptional year for growth and retention of clients and policies through excellent customer service delivered to new and existing clients across the agricultural and commercial insurance markets.



ABOVE: 2019 FUWIS Best Managed Portfolio award went to Ashley Yeo, based in Glamorgan, who has delivered excellent organic growth, retention and customer service through new and existing clients and policies gained across various business sectors.

BELOW LEFT: 2019 FUWIS Account Handler award was presented to Claire Short, based in Head Office, for consistently going above and beyond in supporting the business.

All awards presented at the recent Annual Business Conference by FUW Insurance Services Ltd Board Chairman Tom Jones. Congratulations all three!



LAMLAC®

Number 1 for over 40 years

Helping you rear strong, healthy lambs

Combining a good quality milk replacer, with good husbandry and organisation means more surplus lambs can be successfully reared artificially, saving you hours and helping you produce quality lambs.

www.lamlac.co.uk Freephone: 0800 919808

Follow us Like us Watch us



WE'VE updated our brand. Gone are the grass leaves waving in the wind, and the icons of vehicles, animals and buildings. Instead you'll see large attractive images representing each insurance topic, a cleaner open format with more white space, and text that's easy to digest, (*see above*).

FUW is central to our brand identity and purpose, so our logo hasn't changed, we've just made it bilingual to make it inclusive for all our customers and of course, all new pieces of literature will be bilingual or available in either

Welsh or English depending on your preference.

We've made sure that our new brand is sustainably resourced and all paper used is FSC certified. All the information can be emailed too if you prefer an online copy, just get in touch with your local office for more information.

See all our new leaflets and banners in your local market and at summer shows! Plus look out for more new designs coming this summer for advertising, pvc banners and trailer!

Who "benefits" from your Life Insurance Policy

by Mark Williams DipFA, Life Consultant, FUW Insurance Services Ltd

Business Protection vs Personal Protection

The above products are designed to pay out, sometimes, on life cover only. I will try to explain the difference between the two, with life cover only, in mind.

Personal Protection

This is designed to pay out life cover, if the "life Assured" was to die. The "proceeds" of the policy is paid out to the "policy holder". If the "life assured" was the policyholder, it is paid out into their estate, then to their next of kin. A trust form can be completed, this enables the "life assured" to designate who they want the "proceeds" to go to.

Business Protection

This is designed to pay out life cover, if the "life Assured" was to die. The "proceeds" of the policy is paid out to the "policy holder", which is usually the company or business that is named on the proposal form. This guarantees the "proceeds" are paid out, straight to the business concerned.

I have given a lot of advice to farmers over the years, and have been surprised by the number of "personal protection" policies they have, to cover their businesses.

If your son/daughter has a personal protection policy for life cover, that plan will pay out to their next of kin, not directly to the business.

I gave advice to a farmer the other day, he wanted life cover on his son, who is at present single. The son had just become a partner in the business, and they were purchasing extra land. He wanted to take out personal protection life cover for his son.

I explained that personal protection would pay out to his son's next of kin. The farmer explained that, as his son was single, the policy would pay out to himself and his wife. The policy was for a term of 30 years, and I explained that if his son got married, the proceeds in the future, (if no trust form was completed), would pay out to his future wife, then hopefully given to the business.

To properly protect your business, you should have business protection, with the company or business named on the policy. Make sure your policy is designed to pay out to the appropriate "beneficiary".



PREDICTABLE PROTECTION AGAINST BRD

- ✓ Starts with intranasal administration
- ✓ Protects against the latest BRD strains¹
- ✓ Enables a flexible vaccination calendar

BRD is a relentless hacker, with direct impact estimated at £43 per dairy calf and £82 per suckler calf². Make sure you have proven protection against circulating strains of BRD-causing pathogens¹.



References: 1. Phillippe-Reversat *et al.* (2017) *Acta Vet.* BRNO 86: 325-332 2. Andrews AH (2000) *Calf Pneumonia Cost.* *Cattle Practice* 8(2)

Bovalto Respi Intranasal, nasal spray, lyophilisate and solvent for suspension contains Bovine parainfluenza 3 virus (PI3V), modified live virus, strain Bio 23/A 10¹⁰ - 10¹¹ TCID₅₀ and Bovine respiratory syncytial virus (BRSV), modified live virus, strain Bio 24/A 10¹⁰ - 10¹¹ TCID₅₀. Bovalto[®] Respi 3 Suspension for Injection and Bovalto[®] Respi 4 Suspension for Injection contain inactivated bovine respiratory syncytial virus, strain BIO-24, inactivated bovine parainfluenza 3 virus, strain BIO-23 and inactivated *Mannheimia haemolytica*, serotype A1 strain DSM 5283. Bovalto[®] Respi 4 also contains inactivated bovine viral diarrhoea virus, strain BIO-25. UK: POM-V. More information available in the SPCs or from Boehringer Ingelheim Animal Health UK Ltd. RG12 8YS, UK. Tel: 01344 746957. Email: vetenquiries@boehringer-ingelheim.com. Bovalto is a registered trademark of the Boehringer Ingelheim Group. ©2019 Boehringer Ingelheim Animal Health UK Ltd. All rights reserved. Date of preparation: Jul 2019. AHD12542. Use Medicines Responsibly.

BOVALTO
Respi INTRANASAL

BOVALTO
Respi 3 Respi 4

Farming fears raised with MP

FARMERS from Brecon and Radnor have highlighted their concerns about the future of farming during a recent farm visit in South East Wales.

Opening the gates to his farm Pencoedcae near Tredegar, FUW Vice President Brian Bowen welcomed newly elected MP Fay Jones to discuss issues such as the Agricultural Bill, the urgent need for frameworks and Brexit.

Brian runs a mixed suckler cow and hill sheep unit and the farm consists of 150 acres of owned land with a further 1,000 rented acres and 1,200 acres of common rights on three separate commons.

Speaking about the Agriculture Bill, Brian Bowen said: "The Bill does nothing to ensure food imported to the UK meets UK standards - despite ministerial assurances that imported food would meet our standards. That is a huge concern for our farmers."

While Clause 27 of the Bill, gives the Secretary of State powers to impose written contracts or specific contract terms, it still falls short he stressed.

"The Bill does not extend the powers of the Groceries Adjudicator to cover the whole supply chain. We will therefore continue to stress that farmers selling produce to a supermarket via an intermediary or processor will remain vulnerable."

Farmers further highlighted the urgent need for frameworks in the UK if the UK's 'home market' is to continue working properly and fairly.

"We need frameworks to prevent unfair competition between producers in different parts of the UK. The Direct Payments to Farmers (Legislative Continuity) Order illustrates our fears: It removes the EU Pillar 1 financial ceilings mainly to allow Scotland to pay more money to farmers following Lord Bew's review of payments.

"If an additional windfall promised by the UK Government in August 2019 is paid through the BPS in 2020, the difference between average Scottish and Welsh farm payments will be around £16,200. Paying such an additional sum was not possible under the EU framework as it would have exceeded the Pillar 1 financial ceiling," said Brian Bowen.



FUW members discuss critical farming matters with newly elected MP Fay Jones.

Emphasising the importance of trade, Union officials told MP that 35 per cent or more of Welsh lamb goes to Europe and that trade there is important. But with 60 per cent + going to England - it is critical that nothing breaks the UK Home market as a policy in devolved arrangements.

"This is a challenge philosophically and politically for some: Frameworks, by definition, restrict devolution and sovereignty, yet no advanced or mature nation which has a trading arrangement with another country or is part of a single market does not operate without the restrictions of frameworks that ensure the proper functioning of the market."

Since 2016, following an internal consultation, the FUW has argued for frameworks to be agreed between UK

Governments in order to prevent inappropriate differences between policies and funding in different parts of the UK.

"As an organisation established more than sixty years ago to advance and protect the interests of Welsh farmers, we remain fully committed to devolution and the advantages it has brought to Wales and other nations over the past two decades.

"But such changes do not negate the need for all our nations to work together to develop approaches which are mutually beneficial and protect not only our farmers and internal markets, but also our status and reputation across Europe and the World," added Brian Bowen.

Addressing farmers concerns about Brexit, the Vice President reminded the MP that it was paramount the UK Government seeks to reach a long term agreement with the EU which maintains simple and tariff-free access to the EU's Single Market.

"This UK Government has to ensure transitional and post-Brexit trade arrangements do not sever established supply chains which are of importance and add value to Welsh and UK produce. But, we must also investigate opportunities to develop new trading arrangements with other countries and trading blocs which benefit primary producers and open up or expand markets," he said.

Caernarfon farmers urged to make safety on farm a priority

FARMERS in Caernarfonshire have been urged not to join the long list of fatality statistics, and make their safety on farm a priority.

Speaking after a recent County Executive meeting, FUW Caernarfonshire County Chairman Dafydd Williams said: "Thinking of other people's welfare and safety is often easier than thinking of ourselves. You understand the responsibility you have looking after an employee. But we must take care of ourselves too and that includes looking after our own safety on the farm.

"Over the last twenty years, other industries such as construction have made huge improvements to their safety records, and farming has not. It is frightening to think that you are now six times more likely to be killed on a farm than you would on a building site!

"That of course is not right and we have to address the issue - each and every one of us,

on our own farms. Agriculture is known to be one of the most dangerous professions with farmers often working alone, in challenging weather conditions and in stressful situations.

"The risks on farms are all well-known and it shouldn't be so difficult to manage them. But all too often we put ourselves in situations where one slip can have life changing or even fatal consequences."

The figures published in the Health and Safety Executive's report 'Fatal injuries in agriculture, forestry and fishing in Great Britain 2018/19' show 39 people were killed as a result of farming and other agriculture-related activities during the year, that's 6 more people than the 5-year average of 33 per year.

Nearly half of the agricultural workers killed were over 60 with overturning vehicles or

being struck by moving vehicles causing most deaths.

Mr Williams urged farmers to think about what they're doing before getting started. "6 people died in Wales last year because of an accident on the farm. That's 6 families who went through life-changing trauma and many

more will have been affected by the tragedies. It is not acceptable.

"Follow all the advice including wearing that helmet and make the promise to your family and yourself that you will come home at the end of the day," he said.

SALERS WILL MEAT YOUR NEEDS!
SLEEP EASY AND LET SALERS DO THE WORK FOR YOU



English Premier Pedigree Show & Sale:

21st March 2020 Newark Livestock Market, Newark

Stirling Bull Sales

4th May 2020 United Auctions, Stirling

Welshpool Show and Sale

21st May 2020 Welshpool Livestock Centre



MORE BEEF LESS GRIEF

T: 07903 626 249 E: secretary@salers-cattle-society.co.uk
www.salers-cattle-society.co.uk

LINCOLN RED CATTLE SOCIETY



2020 Royal Welsh Show - Beef Interbreed Champion

English Premier Spring Show & Sale

21st March 2020

at Newark Livestock Market

25 Bulls and 18 Females

Spring Show & Sale

18th April 2020

at Worcester Livestock Market

www.lincolnredcattlesociety.co.uk



Rural Environmental Services

Contact us

Tel: 07368 391501

Email:

enquiries@kebek.co.uk

KeBeK Ltd, specialise in advice on regulatory compliance.

- Clean and Dirty water separation
- Slurry storage calculation
- Planning permission advice
- SUDS (Sustainable Urban Drainage scheme)
- Ammonia assessment

With over 60 years experience in the sector, we can make a real difference to your business. Working with members, we'll look for cost effective ways to reduce your environmental impact and achieve regulatory compliance.

Passionate about Wales - our environment, heritage and community. We're looking forward to working with members of the Farmers' Union of Wales.

Potentially funded through Farming Connect.

Helping farmland birds survive

FARMERS across Wales are embracing conservation work and aiming to increase biodiversity on their holdings. Many are actively providing habitats that will help reverse a decline in species, often without grant aid.

John and Sarah Yeomans, who farm at Llwyn y Brain, Adfa, Newtown, are committed to do what they can to ensure that food production works hand in hand with conservation and environmental goals, and hosted a Big Farmland Bird Count (BFBC) event to demonstrate what species they have on their farm.

The Yeomans family farm a fragmented upland and reclaimed hill unit of around 285 acres (115ha) running up to 1,420 feet above sea level. They keep around 90 cows and replacement heifers, mainly Limousin and British Blue x alongside a flock of around 700 Beulah ewes and ewe lambs.

The family hosted the BFBC event with Matt Goodall from the Game and Wildlife Conservation Trust (GWCT) and were also joined by a number of neighbouring farmers, exploring ways to boost the variety of wild birds on their farmland.

John said: "A lot of farmers, by their nature, are already doing a lot of conservation work. With or without grants. The problem is not many people know about the good work that is being carried out by farmers, so I hope that in future farmers can be portrayed in a better light."

"The aim of the Big Farmland Bird Count is to raise awareness of the great conservation work being done on farms across Wales and to also highlight what can be done to help farmland birds survive this difficult time of year so that the breeding populations are increased," says Matt who wants to encourage Welsh farms to take part in the initiative.

Walking around the farm, the family count the different types



of birds who call the trees, hedgerows and grassland at Llwyn y Brain, home.

"I think we've between 50 to 60 different species of bird here, including Lapwings, Hedge Sparrows, Tree Creepers and the Cockerel in the front room who is in his third decade," says John.

"But we'd like to do more work with the GWCT to work out how we can increase the number and ensure we have a healthy, thriving population here. Whatever we do though, we need to have a successful business to go with it. Livestock helps our grass grow, and they turn that into edible protein. Our sheep and cattle are part of the solution and I think it's fair to say that healthy livestock positively contribute to biodiversity and conservation," said John.

Keen to go a step further in their conservation efforts, the Yeomans family want to do more but fear that farmers

sometimes aren't given the right tools and information to achieve desired outcomes.

"An interesting Glastir option highlighted by Matt at the event, was installing bird feeding stations across the farm to help the birds survive over the winter. Annoyingly until today, I didn't know you can add this to your Glastir plan - that has never been promoted to us. We would certainly have added that option to our environment scheme plan, had we known about it.

"Going forward, it is important that the Government and conservation bodies work with farmers. 80 per cent of Wales is farmed land, and whilst some organisations can highlight what's happening on small nature reserves, you have to work with farmers if you want these things to be successful across the country," added John.

Matt adds: "Now is a critical time to ensure that the next scheme is accessible, inclusive and rewards farmers sufficiently to want to take part. We hear all the time how Glastir has been too restrictive and when you consider less than a quarter of Welsh farms are in Glastir you realise something has to change.

"Farmers have got to be seen as the solution to halting wildlife declines, and GWCT has demonstrated it's possible to bring back farmland birds and a host of other wildlife, whilst maintaining farm profits, proving it doesn't have to be one or the other as some might think. What's crucial is having the right tools in the toolbox and an improved, accessible agri-environment scheme could really help farms achieve this," says Matt.

The Big Farmland Bird Count took place between February 7 - 23, if you got involved remember to upload the results so we start to see what birds are responding to the conservation efforts being made by so many Welsh farmers - www.bfbc.org.uk



The most-commonly seen species in Wales last year were, from left, yellowhammer, carrion crow, robin and blackbird.

Pictures: GWCT

FUW's mid Wales Vice President Brian Bowen also hosted a Big Farmland Bird Count at Pencoedcae Farm, Princetown, near Tredegar recently. He has a 230 suckler breeding herd and over 1,200 sheep which graze the three commons that surround his farm in Blaenau Gwent, South East Wales.

He believes that not only do the cows break up the vegetation to create a more diverse habitat for different species to nest and feed in, but poaching of the ground with their feet also creates water capture which again is another habitat to attract more wildlife.

Brian Bowen said: "My cows and sheep are integral to boosting wildlife, it also provides access by breaking up the vegetation to the vast numbers of people who visit the area," he says, pointing to the Brecon Beacons which the ground extends to. In fact, Brian is surrounded by Common land which is used by many people with different interests as well as it being critical to the farming enterprise.

Neighbouring farmers to Brian are also breeding cows along with

sheep in these peat rich hills which are storing millions of tonnes of carbon, using the native breeds - Galloway and Welsh Blacks for example - which are hardy and flourish in its harsh conditions of high altitude and rainfall.

"It requires a special breed of cow here which is the cornerstone for the lowland breeders," said Brian, who describes the native breeds as being tough but stresses that their contribution to the health of the moorland is poorly understood, and the threat of a TB outbreak to all Welsh cattle farmers is a constant worry.

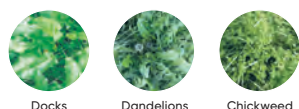
Matt Goodall from the Game & Wildlife Conservation Trust Wales did a presentation to the group of farmers and neighbours on why all farms need to think about birds at this time of year in particular.

Known as the 'hungry gap', birds are struggling to get enough food to reach breeding condition, emphasising that small changes to certain areas of the farm can really boost birdlife and give untold benefits.



Kill docks for great grassland.

Doxstar® PRO
HERBICIDE



Market leading Doxstar® Pro kills docks.

If you have a problem with broad or curled leaf docks, Doxstar® Pro's concentrated formulation combines the power of triclopyr and fluroxypyr to deliver outstanding dock control. It is highly effective on chickweed and dandelions too and is very safe to your grass.

For harder working grassland, talk to your advisor or find out more at corteva.co.uk



Discover more at corteva.co.uk
Technical Hotline: 0800 689 8899
E-mail: ukhotline@corteva.com

USE PLANT PROTECTION PRODUCTS SAFELY. Always read the label and product information before use. For further information including warning phrases and symbols refer to label.

Corteva Agriscience, CPC2 Capital Park, Fulbourn, Cambridge CB21 5XE. Tel: 01462 457272.

*, ® Trademarks of DuPont, Dow AgroSciences or Pioneer and their affiliated companies or their respective owners. Doxstar® Pro contains fluroxypyr and triclopyr.

Let us take the stress of form filling away - book today

IT'S that time of year again when we start thinking about Single Application Forms (SAF). The application window opened on Monday March 2 and the FUW is reminding its members that county staff are here to help and ready to take the stress of filling the form away from you.

The FUW provides this service exclusively to all paid-up members as part of their membership package, which has proved invaluable for thousands of members over the years - saving them time and a paperwork-headache.

FUW Membership and Operations Manager Caryl Roberts said: "The SAF completion process is probably the single most important form completion exercise being carried out by Welsh farmers since 2004, and the financial repercussions of errors on the forms are severe.

"Our staff are not only well trained but very well practised in dealing with the complex application process." Since the Welsh Government mandated that all applications should be done online, the FUW is focused on providing the best possible service to its members.

"I encourage our members and first-time form fillers to contact their local office as soon as possible to book an appointment if they need help in filling out the form," added Caryl Roberts.



SAF YN ACHOSI PENBLETH?

Gadewch i ni ysgwyddo'r faich o lenwi'r ffurflen - ffoniwch eich swyddfa sirol i wneud apwyntiad

Ynys Môn/Anglesey:	01248 750250
Brycheiniog a Maesyfed/Brecon and Radnorshire:	01982 554030
Caernarfon:	01286 672541
Caerfyrddin/Carmarthenshire:	01267 237974
Ceredigion:	01570 424515
Dinbych a Flint/Denbigh and Flint:	01824 707198
Morgannwg/Glamorgan:	01446 774838
Gwent:	01873 853280
Meirionnydd/Merioneth:	01341 422298
Sir Drefaldwyn/Montgomeryshire:	01686 626889
Sir Benfro/Pembrokeshire:	01437 762913

CONFUSED ABOUT YOUR SAF?

Let us take the stress of form filling away - call your local county office to book your appointment

ARCHWILIO
EICH
YSWIRIANT
AM DDIM

Os ydych yn **AELOD FUW**, rydym yn cynnig **ARCHWILIAD O'CH YSWIRIANT AM DDIM**



**YDI'R YSWIRIANT
CYWIR GYDA CHI?**



Cofrestrwch am archwiliad yswiriant AM DDIM yn ystod eich apwyntiad SAF a gadewch i'n harbenigwyr yswiriant amaethyddol ofalu amdanoch chi

Ddim yn dod mewn i'r swyddfa yn y dyfodol agos?

Mae pob aelod yn gymwys i gael archwiliad yswiriant AM DDIM, felly ffoniwch 01970 820820 neu'ch swyddfa leol i drefnu apwyntiad gyda'ch cynrychiolydd lleol heddiw

Free
Health
Check

If you're an **FUW MEMBER**, we are offering a **FREE INSURANCE HEALTH CHECK**



**HAVE YOU GOT THE
RIGHT COVER?**



Sign up for your **FREE** health check during your SAF appointment and let our agricultural insurance experts look after you

Not coming in to the office anytime soon?

All members are eligible for their **FREE** insurance health check, so call 01970 820820 or your local office to book an appointment with your local representative today

Amaethyddiaeth: Ddoe, heddiw ac yfory...



gan Euros Jones, Swyddog Cynlluniau Amaeth-Amyglcheddol FUW

MAE'R berthynas rhwng cynaliadwyedd ag amaethyddiaeth yn ddyrs, ond yn hanfodol. Yng Nghymru, mae'r diwydiant amaeth yn rheoli'r amgylchedd, yn greiddiol i'r strwythur economaidd, ac yn asgwrn cefn i'r gymdeithas frodorol Gymreig. Heddiw, amhosib yw ystyried amaethyddiaeth heb grybwyll cynaliadwyedd, maent yn gyfystyr, ac yn llwyr ddibynnol, ar ei gilydd.

Ar hyd y blynyddoedd, daeth sawl ergyd i'r diwydiant amaeth, ac yn dilyn y Chwyldro Diwydiannol, newidiodd strwythur ffermio a chefn gwlad yn llwyr. Cafodd technoleg a'r datblygiadau yn y maes gwyddonol ddylanwad aruthrol ar y ffordd o amaethu. Mae cymaint o beiriannau modern erbyn hyn yn diwallu anghenion y ffermwyr, ac yn gwneud eu gwaith yn llawer haws.

Bellach, mae'r caeau bychain, traddodiadol, a arferai ffurfio patrwm cynefin Cymru, wedi diflannu, ac mae'r tirlun yn gwbl wahanol. Cafodd y cloddiau a fu yno ers cenedlaethau eu chwalu, a daeth lleiniau anferth o dir agored hwylus i'w disodli. Erbyn heddiw, nid oes angen hanner cymaint o weision fferm. Yn yr hen ddyddiau, roedd fferm cyn lleied â hanner can acer yn ddigon mawr i gadw tad, mab, ac efallai gwas, mewn gwaith.

Yn ddi-ddorol, yn 1921 roedd 41,000 o ffermwyr yng Nghymru yn rhoi gwaith i 17,000 o aelodau'r teulu. Roeddent yn cyflogi 53,000 o weision fferm, ynghyd â 15,000 arall o weithwyr tymhorol neu achlysurol e.e. yn ystod cynaeafu a chyfnod wyna. Fodd bynnag, erbyn ail hanner yr ugeinfed ganrif, yn aml, dim ond un dyn oedd ei angen. Bu'r datblygiad mewn technoleg yn gyfrifol am leihau costau cynhyrchu a maint llafur yn bennaf, ac o ganlyniad, dirywiodd pris y farchnad, gan achosi lleihad sylweddol mewn incwm. Bu'r Chwyldro Amaethyddol yn ergyd fawr i'r diwydiant. Er hyn, mae ffermio'n parhau i fod yn ganolbwynt yn y cynllun economaidd, ac yn greiddiol i ddyfodol cefn gwlad.

Mae gwleidyddiaeth yn rheoli amaethyddiaeth, a dyna pam fod rôl y llywodraeth heddiw mor dyngedfennol i sicrhau dyfodol llewyrchus i'r diwydiant. Fodd bynnag, er mor greiddiol yw cymorthdaliadau, ni all yr

un ffermwr ddibynnu'n llwyr arnynt. Peth annoeth fyddai bod yn or-ddibynnol ar gymorthdaliadau, dylid hefyd ystyried ffyrdd eraill o'i chwmpas hi. Rhaid dysgu a bod yn barod i newid y ffordd draddodiadol o ffermio, a buddsoddi mewn technoleg. Mae'n ofynnol i'r ffermwyr gydfynd â'r oes sydd ohoni, a pheidio aros yn eu hunfan.

Mae'n bwysig cofio fod y diwydiant amaeth yn ymwneud â phethau ychwanegol i ffermio, mae'n cynnal busnesau a gwasanaethau eraill yng nghefn gwlad. Mae'r pwyslais yn gynyddol ar gynnal gwaith er budd yr economi leol, ac felly nid yn unig dyfodol ffermydd sydd yn y fantol, ond hefyd, rhai o'r busnesau bach hynny sydd wedi llunio cymeriad sawl cymuned ers cenedlaethau.

Yn nhermau cynaliadwyedd, problem amlwg yw'r anghydfod rhwng y wlad a'r dref. Y gwirionedd yw, mai yn y trefi y mae'r arian bellach, ond cefn gwlad sydd yn darparu i'r trefi ddŵr i'w yfed, awyr iach i'w anadlu a bwyd iachus i'w fwyta. Mae cefn gwlad yn cynnig llawer mwy i drigolion y trefi, e.e. tirwedd gyfoethog, treftadaeth ddiwylliannol, bioamrywiaeth a'r cyfle euraidd i hamdden.

Nid oes unrhyw amheuaeth bod ffermio wedi newid a moderneiddio. Ar hyn o bryd, mae'r diwydiant yn ddibynnol ar danwyddau ffosil a chemegau artiffisial. Mae'n broblem fyd-eang, ac mae'r hyn ddigwyddodd i gynhaef 'hybrid corn' yn y Gorllewin Canol, yn profi hyn. Ar un llaw, gellid awgrymu mai datblygiadau technolegol, megis gwella offer hadu a chynaeafu, gwrtaith, rheoli heintiau, a dyrhad, a fu'n bennaf gyfrifol.

Heddiw, dylid ystyried amaethyddiaeth gynaliadwy fel y 'norm', ac er mwyn llwyddo, mae hi'n anrffod i ffermwyr newid eu trefn bresennol o amaethu. Nid proses hawdd yw newid barn y ffermwyr hynny sydd wedi arfer gyda'r hen arferion dros y blynyddoedd. Mae angen ystyried sut i werthu'r dulliau newydd, er mwyn annog, a darbwyllo'r amaethwyr, fod creu'r newidiadau hyn yn greiddiol i hyrwyddo'r diwydiant ymhellach. Yr her felly yw sicrhau fod y newidiadau hyn yn atyniadol, ac yn ymarferol bosib, i ffermwyr ymgymryd â hwy.

Beth am rôl amaethyddiaeth ei hun? Daw pob diwydiant â'i gyfrifoldebau, ac nid yw'r diwydiant amaeth yn eithriad. Hawdd iawn yw edrych yn ôl, ac edmygu'r hen ffyrdd traddodiadol o amaethu, ond nid dyma'r ffordd i feddwl yn nhermau amaethyddiaeth gynaliadwy. Amhosib yw bod yn llwyr ddibynnol ar gymorthdaliadau. Mae'n hanfodol ein bod yn uchelgeisiol, a gyda meddwl agored i fod yn fwy pendant ein barn yn erbyn ansicrwydd gwleidyddiaeth, a sefyllfa fregus yr economi.

Mae'r pwyslais yn aml ar arallgyfeirio, ac ar newid a hwyluso'r ffyrdd traddodiadol o ffermio. Mae'n rhaid meddwl yn fwy creadigol, a chynllunio ar gyfer y dyfodol. Beth bynnag fo'r ateb, trwy weithredu'n effeithiol, gellid diogelu popeth sydd o werth yn y Gymru wledig, a bod yn gyfrifol am ei chreu'n asgwrn cefn i wlad gynaliadwy.

This article is available in English on the FUW website - News - Y Tir News: "Agriculture: Yesterday, today and tomorrow..."

Positive impact

AT a meeting hosted by Castell Howell, FUW Senior Policy Officer, Dr Hazel Wright, met with Future Generations Commissioner, Sophie Howe, in order to discuss how the Well Being of Future Generations Act could be utilised to positively impact on issues such as domestic food procurement and bovine TB regulation.



From left, Future Generations Commissioner Sophie Howe, Dr Hazel Wright and Edward Morgan (CH Foods).

Avoid penalties

FARMERS are being urged to remember the hedge cutting regulations which are in place as part of cross compliance to avoid a penalty on their BPS payment.

FUW Deputy President Ian Rickman said: "Most farmers will remember that they are not allowed to cut trees or hedges between March 1 to August 31. If they don't comply with the rules, they could face a hefty cross compliance penalty on their BPS payment which is avoidable.

"There are exceptions to the standard rule, but only if the conditions are met can you start cutting early or late.

"I also urge our members to remember that for safety reasons electricity and telephone companies are responsible for the maintenance of any overhanging trees and/or hedges which affect their equipment," said Ian Rickman.

Solway 100% Recycled Plastic Sheep Pens

Buy Online Now



Sheep pens available in a row or back to back. Pens are lightweight and easy to install.



Won't rot, low maintenance, no hung lambs, easy stored, ewe more settled and hygienic



6 Bay or 3 Bay Lamb Adopter Circles. Also a 6 Bay Easy Access Adopter for easy feeding.



STOCKBOARD, ECOSHEET & AGRIBORD



SELECTION OF ANIMAL HOUSING & CALF PENS



PET & POULTRY HOUSING



Call Anytime on 01387 730 667 or visit www.solwayrecycling.co.uk



Solway Recycling

100% Recycled Products, a UK Wide On Farm Waste Plastic & Waste Oil Collection Service



Check out our [facebook page](#) for competitions & updates

Farmplus

Recruiting Reps - See website for details

MANUFACTURER OF TIMBER BUILDINGS

Timber buildings
Natural products from renewable resources.
Caring for the environment.



3 BAY MONOPITCH

as shown
45ft x 17ft x 10ft 6in, eaves
£5,250 + VAT
delivered
Many other options available

FARMPLUS SHAY LANE, LONGRIDGE, PRESTON PR3 3BT
Tel: 01772 785252 www.farmplus.co.uk

Do you know the value of your membership?



FUW Member Value

If you put a value on each of the member benefits

BPS Form	£300
Penalty Appeal Letter	£150
BCMS Movements x30	£150
TB Query Advice	£50 an hour
Manage My Land	£50 an hour
Sheep Inventory Form	£75
CPH Management	£100
Y Tir Newspaper	£25
Total	£900
PEACE OF MIND	PRICELESS

(Prices based on a 100 acre farm)

Representation and Lobbying

Your membership ensures our Policy team and Presidential Team make your voice heard from your local council to national Governments as well as public bodies such as NRW.

We actively and independently campaign to advance the interests of the farmers of Wales.

Since the 1st January 2020 the Policy team has spent over 280 hours attending 56 high level meetings, and have driven over 3500 miles!

The FUW's Policy Team also produce a monthly ebulletin packed with all the latest agri-information including grant deadlines, regulation updates and more!

Every year we raise money for our President's chosen charity. The farmhouse breakfast week in Jan 2020 alone raised over £15000 towards the DPJ Foundation who help to support mental health issues in agriculture

Thank you
for being a valued FUW Member
#FarmingMatters

Don't Forget Your Discounts!

Visit www.fuw.org.uk
to see all our great
member offers and discounts



Law



Available now for all FUW members!

Be kind. Always.

by Emma Picton-Jones, Founder,
The DPJ Foundation

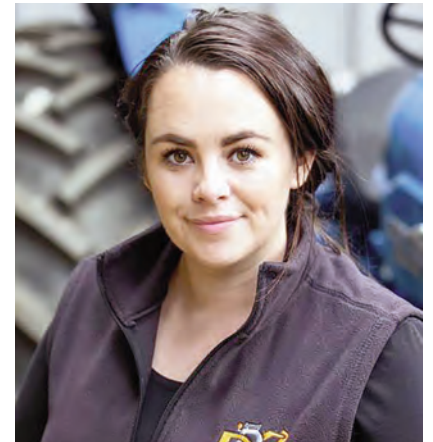
IT'S a busy time of year, the lull after Christmas doesn't seem to have happened and much like those who are busy lambing, we too have been busy. We have been busy working with many organisations delivering Mental Health Awareness training. We are great believers that the power of our sector is the people who make it, we want to train as many of those as possible to be able to support each other with poor mental health.

It is important to understand what mental health is, spot the signs and know what to do and what to say. We also teach suicide awareness, as a sector with a high suicide rate it is vital we tackle this issue head on. We have trained over 1,000 people across Wales - all of whom work in the farming community.

Several of our volunteers enjoyed attending the Farmhouse breakfast week, not only was the food amazing but seeing the local community coming together was a wonderful sight. We as a sector are so isolated, opportunities like that provide much needed time away from the farm and to be around other people - not just cows and sheep!

We have a busy few months coming up, with the funding from Welsh Government last year to specifically provide support in North Wales we have decided to take on some more volunteers to help us spread the word about mental health. We hope to be getting out to as many events and shows as we can so if you have something going on we can be a part of please let us know.

In light of all the talk around mental health in the media at the moment we will leave you with one message - Be kind. Always. You never know what someone is going through behind closed doors.



THE
DPJ FOUNDATION

Tel: 0800 587 4262 / Text: 07860 048799.

E-mail: contact@thedpjfoundation.com

01248 750250

anglesey@fuw.org.uk

ANGLESEY

Llysgennad y Sioe

Llongyfarchiadau mawr i Cain Owen ar gael ei phenodi yn Llysgennad Sioe Sir Fôn. Mae Cain yn fyfyrwr trydedd flwyddyn yn astudio yng Ngholeg IBERS Aberystwyth. Dymuniadau gorau a phob lwc iddi ar ei blwyddyn yn y rôl.

Congratulations to Cain Owen on being appointed as the Anglesey Show Ambassador. Cain is a third year student studying at IBERS college, Aberystwyth. Best wishes and good luck for her year in the



Cain (chwith) gyda Cyn-Llysgennad y Sioe, Manon Parry.

Drama CFFI

Nos Wener Chwefror 14eg cynhaliwyd cystadleuaeth Drama CFFI Môn yn Theatr Fach, Llangefni a dyma beth oedd gwledd o adloniant. Llongyfarchiadau mawr i Glwb Rhoysbol ar ddod yn fuddugol a phob lwc iddynt yn cynrychioli'r sir yng Nghaernarfon. Unwaith eto eleni roedd yr Undeb yn falch iawn o allu cefnogi'r noson drwy noddi'r gystadleuaeth.

A hithau'n ddiwrnod San Ffolant cafwyd naws rhamantus i gloi'r noson gyda chyn aelodau yn cymryd rhan mewn cystadleuaeth Siôn a Siân!

On Friday February 14 the Anglesey YFC Drama competition was held at Theatr Fach, Llangefni and this was an extremely entertaining evening. Congratulations to Rhoysbol YFC on their victory and good luck to them representing the county in Caernarfon. Once again this year the Union was delighted to be able to support the evening by sponsoring the competition. As it was Valentine's Day, the evening ended with a romantic atmosphere with former members taking part in a Siôn and Siân competition!



Criw buddugol Clwb Rhoysbol gydag Alaw Jones (chwith), Swyddog Gweithredol Sirol Ynys Môn a Mareid Huws (dde), beirniad y gystadleuaeth.

01982 554030

breconandradnor@fuw.org.uk

BRECON & RADNOR

YFC Dramas

County Officials attended Brecon Drama Festival Gala night on February 8, with Mr Dwylan Davies presenting the awards on our behalf to the winners. On February 22, Catrin Price, County Executive Officer attended Radnor Gala Night at the Albert Hall, Llandrindod and presented the awards.

The County wishes both clubs Pontfaen representing Brecknock and Rhayader representing Radnor the best of luck in the all Wales Finals at Caernarfon.



Samuel Powell, Erwood YFC, (right), presented with his Senior One Plus Best Male Performer award from FUW Brecon and Radnor County Chairman Dwylan Davies.



Caitlin Harley, Builth Wells YFC won the One Plus Best Female Performer, she receives her award from Dwylan Davies.



Clare James, (right) Howey YFC presented with the Best Actress award from County Executive Officer Catrin Price.



Katie Hammonds, (right) Edw Valley YFC presented with the Best Actress Under 16 award from Catrin Price.

SAF - we're here to help

The SAF is now ready to be completed. If you would like assistance with completing the form please contact the office to make an appointment on 01982 554030.

Appointments are available in both Builth and Brecon office, which ever is your preference.

Sub branch meetings

The North Sub Branch meeting was held in the Pavilion on the Showground with FUW Policy Officer Bernard Griffiths giving members an update on the Agricultural Policies, with the second being held in the South Branch in Penderyn with Dr Nick Fenwick, Head of Policy as guest speaker. Both were very interesting and giving members an insight into their day to day work.

01286 672541

caernarfon@fuw.org.uk

CAERNARFON

Pwyllgor gwaith

Cynhaliwyd Cyfarfod Pwyllgor Gwaith y sir yn y Labordy Gwlân, Caernarfon. Cafwyd taith o amgylch y labordy lle dysgwyd llawer ar sut roeddent yn dadansoddi ansawdd y gwlan. Syndod oedd clywed mai hwn yw'r unig labordy o'i fath yn Hemisffer y Gogledd a'i bod yn derbyn gwlan i'w profi o nifer o wledydd Ewrop.

A meeting of the County Executive Committee was held at the Waterfront Laboratory, Caernarfon. During a tour of the laboratory we gained an insight into how they analyse the quality of the wool. It was surprising to learn that it is the only laboratory of its kind in the Northern Hemisphere that receives wool to test from a number of European countries.



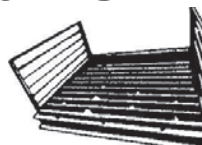
Diolch am eich cefnogaeth

Hoffwn ddiolch i'n haelodau am eu cefnogaeth yn ystod wythnos y brecwastau lle codwyd dros £5,700, sydd yn swm arbennig o dda unwaith eto.

I would like to thank our members for their support during breakfast week which raised over £5,700 which is a fantastic amount again.

HOPKINS QUICK FIT CATTLE GRID & BASE

- LOAD TESTED TO 50 TONS
- Installed within hrs/not days
- Minimal labour
- Maintenance free
- No concrete/blocks required - set in the ground on a hard core base



Pat No. 2155526

PLEASE SEND FOR BROCHURE
HOPKINS STEEL FABRICATIONS
 Unit 2A, Lion Works, Pool Road, Newtown, Powys SY16 3AG
 Tel: (01686) 627374 Fax: (01686) 627515
www.hopkinscattlegrids.co.uk

Shepherd Required STANFORD SHEEP

An exciting opportunity has arisen for an, enthusiastic and ambitious person to join our team of highly experienced and dedicated shepherds taking responsibility for the care and husbandry of 6000 hefted Beulah ewes based near Thetford in Norfolk.

Applicants must have good communication skills, be self-motivated and an organised team player with a valid UK driving License. Agricultural qualifications are desirable but not essential.

A very competitive salary, commensurate with experience will be offered with the addition of a 3 bedroom house if required.

Please apply with full CV and to request an application form from info@lrfarms.co.uk.

01267 237974

carmarthen@fuw.org.uk

CARMARTHEN

Carmarthenshire YFC Drama



From left, Carmarthenshire YFC County Chairman Iestyn Owen; Best Producer winner Gary Davies, Llanllwni YFC; Carmarthenshire YFC County President Jean Lewis; and FUW County Chairman Phillip Jones.

01570 424515

ceredigion@fuw.org.uk

CEREDIGION

Llongyfarchiadau Emma

Yn ein Cynhadledd Busnes Flynyddol yn Aberystwyth yn ddiweddar cafodd Emma Davies, Swyddog Sirol, gydnabyddiaeth am ei gwasanaeth ir Undeb am dros 25 mlynedd, llongyfarchiadau Emma! Mae hi yn y llun gyda Llywydd FUW Glyn Roberts.



At our Annual Business Conference held in Aberystwyth recently Emma Davies, County Executive Officer, received recognition for her 25 years service to the Union, congratulations Emma. She is pictured with FUW President Glyn Roberts.

Diolch

Yn ystod wythnos olaf mis Ionawr trefnwyd tri bore brecwast yn y Sir. Yr un cyntaf yn Neuadd Felinfach, yr ail yn Neuadd Caerwedros a'r trydydd yn Neuadd Penrhyncoch.

Gwelwyd dros 100 o bobl yn mynychu ag i helpu ni godi arian tuag at elusen DPJ Foundation. Diolch yn fawr iawn hefyd i'n prif noddwyr, Volac Felinfach a Dunbia, Llanybydder. Diolch i bawb.

During the last week in January we held three breakfasts in the county. The first one in Felinfach Hall, the second in Caerwedros Hall and the third in Penrhyncoch Hall. We saw over 100 people attend and helped raise money for the DPJ Foundation. Thank you to our main sponsors Volac, Felinfach and Dunbia, Llanybydder. Thank you to everyone.

01824 707198

dinbychflint@fuw.org.uk

DENBIGH & FLINT

Ffurfleni SAF

Os ydych yn llenwi eich ffurflen SAF hefo ni, edrychwch allan am lythyr neu ebost a fydd yn rhoi amser a dyddiad eich apwyntiad i chi. Cofiwch gysylltu â'r swyddfa i gadarnhau yr apwyntiad os gwelwch yn dda.

Planting Hedges or Woodland?

• Trees & Hedging Plants

Native Provenance, Handled with GREAT CARE

• Transparent Spiral Guards

"OWN Brand" Better Quality

Overlapped for easy chemical control

• Fine Mesh Shelters for Shrubs & Trees

- no outdated tubes!

All Planting Accessories, Deer Fencing etc.

Farm Forestry Co Ltd

Tel: 01588 650496 | Fax: 01588 650631



www.farmforestry.co.uk

Cofiwch gadarnhau eich apwyntiad

If you are completing your SAF form at the office, look out for a letter or email with the time and date of your appointment.

Could you also please ring the office to confirm the appointment.

01446 774838

glamorgan@fuw.org.uk

GLAMORGAN

Cowbridge Market update

We have received sad news from the Vale of Glamorgan Council that Cowbridge livestock market will be closing at the end of March 2020. Despite pressure from farming unions, market operators and other groups as well as attending numerous meetings to offer alternative plans, the Council have indicated that they wish for the land to be developed into a car park.

The FUW will be working closely with the Council over the next few months to identify another site upon which to set up a livestock market for members in the Glamorgan area.

YFC Drama weekend



Congratulations to every Glamorgan YFC member who took part in the YFC Drama Weekend. We would like to congratulate Gower YFC for receiving the first place award and a special congratulations to Maendy YFC who were awarded the FUW Award for the Best Scenery.



National Vintage Tractor Road Run

12th April 2020

Glamorgan Vintage Tractor Club
Llanilid Farm, Pencoed, CF35 5LA

Contact Wayne Griffiths on
07866495064 for information

Find us on Facebook:

National Vintage Tractor Road Run 2020

Proudly supporting Wales Air Ambulance & Marie Curie Foundation



01873 853280

gwent@fuw.org.uk

GWENT

The past month

Here are some of the issues the Gwent Office have been involved with over the past month on behalf of members.

Completing BCMS information, applying for Glastir payments, checking Glastir Contracts, submitted two appeals against imposition of penalties, common land queries on BPS, submitting manage my land and manage my CPH forms, RPA query, late BPS payments.

We have also dealt with queries regarding rights of way, sale of entitlements, TB testing, planning, common rights, electricity wayleaves, farm thefts, plastic waste etc.

Plus of course we had our very successful

breakfast events, together with attending Head Office and Agrisgôp meetings, farm visit and our County Executive meeting.

While this has been going on, we have kept our social media page up-dated and been constantly up-dating and recording our activity on our data system, which I personally find the most difficult task of all. But I am, after all, a little older than the average Welsh farmer.

We now look forward to our busy period of assisting members with their SAF.

MEIRIONNYDD

Clywed hanes fferm Graig Isa, Cwm Nantcol

Trefnwyd ymweliad â Graig Isa, Cwm Nantcol, Llanbedr, yng nghanol mis Chwefror drwy garedigrwydd Alun a Moira Jones a'r teulu. Roedd ein Haelod Seneddol Liz Saville Roberts gyda ni, a chafwyd cyfle i glywed hanes y fferm a'r amaethu yno.

Trafodwyd dyfodol a chyfeiriad y diwydiant amaeth, a pha mor bwysig yw gweld ffermydd yr ucheldir ac ardaloedd gwledig yn cael cefnogaeth yn sgil y newidiadau fydd yn ein hwynebu yn y dyfodol. Diolch yn fawr iawn i Alun, Moira a'r teulu am y croeso cynnes yno.

Rydym yn ddiolchgar dros ben hefyd i Mr Dai Miles, Is-Lywydd yr Undeb o Sir Benfro a ddaeth atom ar gyfer yr ymweliad, ac i'r swyddogion a'r aelodau a oedd yn bresennol. Roedd yn sicr yn brynghawn llwyddiannus iawn.

A visit to Graig Isa, Cwm Nantcol, Llanbedr, was arranged mid February courtesy of Alun and Moira Jones and family. Our MP Liz Saville Roberts was present with us, and we learned about the farm's history and farming practices. The future and direction of the agricultural industry was discussed, and how important it is for upland farms and rural areas to be supported in light of the changes we face in the future. Many thanks to Alun, Moira and the family for the warm welcome received. We are also very grateful to Mr Dai Miles, the



O'r chwith; Is-Lywydd UAC Dai Miles; Cadeirydd cylch Ardudwy o'r Undeb Robert Wyn Evans; Liz Saville Roberts AS; Alun a Moira Jones a Cadeirydd y Sir Sion Ifans.

Union Vice President from Pembrokeshire who attended the visit, and to the officers and members present. It was certainly a very successful afternoon.

Cyfarfod Blynyddol

Daeth nifer dda iawn ynghyd ar gyfer Cyfarfod Blynyddol Undeb Amaethwyr Cymru Meirionnydd a gynhaliwyd ar ddiwedd mis Ionawr. Thema'r noson oedd 'Cig Coch, yr 20 mlynedd nesaf' a cafwyd trafodaeth brwd a noson ddi-ddorol dros ben. Roedd amseriad y noson yn ei gwneud yn hanesyddol, sef gadael yr Undeb Ewropeaidd am 11yh ar y noson honno. Y neges gyffredinol oedd bod gan y diwydiant amaeth yng Nghymru stori dda i'w hadrodd, a bod rhaid edrych ymlaen yn bositif a hyderus yn sgil newidiadau anorfod yn y blynyddoedd nesaf.

Roedd pedwar o siaradwyr ar y panel, sef Dewi Williams o ladd-dy Cig Eryri yn Ffestiniog; Gwyn Howells o Hybu Cig Cymru; Wyn Williams o gwmni Dunbia; a Rhys Davies o gwmni Farmers Marts.

Ar ddechrau'r noson cafwyd adroddiad gan Huw Jones, Swyddog Sirol am weithgareddau'r gangen sirol yn ystod y flwyddyn aeth heibio. Cadeiriwyd y noson gan Olwen Ford, Llanfrothen, Llywydd y Gangen, a thalwyd y diolchiadau gan Sion Ifans, Cadeirydd y Gangen.

Farmers' Union of Wales Meirionnydd county Annual General Meeting was held at the end of January which was well-attended. The evening focussed on 'Red Meat - the next 20 years' and it was a most interesting evening. The timing of the event certainly made it a historic occasion for us here in the county, as we left the EU at 11pm that evening. The main message was that the agricultural industry in Wales has a good story to tell and that we must look forward to the future confidently and positively in view of the inevitable changes and challenges facing the industry. There were four speakers on the panel, Dewi Williams - Cig Eryri abattoir in Ffestiniog; Gwyn Howells - Hybu Cig Cymru; Wyn Williams - Dunbia; and Rhys Davies - Farmers Marts. Huw Jones, County Executive Officer opened the evening with an update of the county's activities over the past year. The evening was chaired by Olwen Ford, Llanfrothen, County President and Sion Ifans, the County Chairman thanked everyone for their presence.

Menter newydd



O'r chwith; Is-Lywydd UAC Dai Miles; Cadeirydd UAC Meirionnydd Sion Ifans; Cadeirydd cylch Ardudwy Robert Wyn Evans; Liz Saville Roberts AS a Will Ellis.

Cafwyd cyfle yng nghanol mis Chwefror i alw heibio Dewi Thomas a Will Ellis o fusnes tractorau a pheiriannau amaethyddol 'DG Thomas Agri' yn Llanbedr efo Liz Saville Roberts AS a swyddogion yr undeb.

Roedd yn gyfle i longyfarch Will ac i ddymuno yn dda iddo yn ei fenter newydd ar y safle. Bydd yn sicr yn cynnig gwasanaeth gwyb i berchnogion tractorau a pheiriannau o bob math yn yr ardal, a bydd cyfleusterau'r gweithdy a'i brofiad eang ym maes peirianneg amaethyddol yn werthfawr iawn i'r ardal.

In mid Febuary, there was an opportunity to visit Dewi Thomas and Will Ellis from 'DG Thomas Agri', a tractor and agricultural machinery business in Llanbedr with Liz Saville Roberts MP and Union officials. It was an opportunity to congratulate Will and wish him well in his new venture on site. It will certainly offer a great service to all tractor and machine owners in the area, and the workshop facilities and extensive agricultural engineering experience will be of great value to the area.

Ymweliad Dyffryn Dysynni

Cafwyd cyfle ym mis Chwefror i ymweld â Dyffryn Dysynni, ger Tywyn gyda Geraint Davies, aelod o Fwrdd Cyfoeth Naturiol Cymru a rhai swyddogion. Trafodwyd y system ddraenio mewn manylder, a'r gwaith sydd ei angen. Rhoddwyd pwyslais ar mor bwysig yw cael adnoddau digonol i gynnal a chadw'r system ddraenio unigryw hon er lles y diwydiant amaeth. Rydym yn ddiolchgar dros ben i bawb am eu hamser a'u diddordeb.



We had an opportunity in February to visit the Dysynni Valley near Tywyn with Geraint Davies, member of the Natural Resources Wales Board and some officials. We discussed the area's drainage system in detail, and the work required. We emphasised how important it is that adequate resources are given to maintain this unique drainage system for the benefit of the farming industry. We are grateful to everyone for their time and interest in this matter.

Noddi cystadleuaeth CFFI Meirionnydd

Cynhaliwyd Cystadleuaeth Aelod Iau ac Aelod Hŷn y flwyddyn Clybiau Ffermwyr Ieuaic Meirionnydd ym mis Chwefror, yn ogystal â chystadleuaeth Llysgennad a Llysgenhades y sir. Y beirniad oedd Gwawr Ifans, gwraig Llywydd y Sir; Alwyn Rees Is-Lywydd y Sir a Huw Jones ar ran Undeb Amaethwyr Cymru. UAC Cangen Meirionnydd oedd yn noddi'r gystadleuaeth Llysgennad a Llysgenhades. Llongyfarchiadau i'r holl gystadlwyr. Roedd y safon yn uchel iawn. Hefyd pob lwc i Aelodau'r Flwyddyn sydd yn mynd ymlaen i gystadlaethau Cymru.

The Meirionnydd Young Farmers Clubs Junior and Senior Member of the Year Competition was held in February, as well as the County

Ambassador competition. The judges were Gwawr Ifans, County President's wife; Alwyn Rees, County Vice President and Huw Jones on behalf of the Farmers' Union of Wales. FUW Meirionnydd Branch sponsored the Ambassador competition. Congratulations to all the competitors. The standard was very high. Also good luck to Members of the Year who go on to the Welsh competitions.

Canlyniadau/Results

Aelod Iau/Junior Member - Glain Eden, CFFI Prysor ac Eden YFC

Aelod Hŷn/Senior Member - Manon Williams, CFFI Brynchrug YFC

Llysgenhades - Ffion Roberts, CFFI Glannau Tegid YFC.

CFFI Meirionnydd

Llongyfarchiadau calonog iawn i bedwar o Glybiau Ffermwyr Ieuaic Meirionnydd fu'n cystadlu yn y gystadleuaeth dramâu yn Rhydymain ym mis Chwefror. Roeddent o safon uchel iawn, a'r cyfan yn wych! Roedd yn fraint fawr iawn i ni yn Undeb Amaethwyr Cymru gael noddi'r tlysau unwaith yn rhagor. Cyflwynwyd y gwobrau gan Sion Ifans, Cadeirydd Sirol UAC Meirionnydd.

Congratulations to four of the Meirionnydd Young Farmers Clubs who competed in the drama competition in Rhydymain in February. They were of a very high standard, and fantastic! It was a great privilege for us at the Farmers' Union of Wales to sponsor the trophies once again. The awards were presented by Sion Ifans, County Chairman of Meirionnydd FUW.

Canlyniadau/Results:

1 - CFFI Cwmtirmynach YFC

2 - CFFI Dinas Mawddwy YFC

3 - CFFI Maesywaen YFC

Actor gorau/Best Actor - Gethin Jones, CFFI Cwmtirmynach YFC

Actores orau/Best Actress - Delyth Dempsey, CFFI Maesywaen YFC.



Actor gorau.



Actores orau.

MMP
MORRIS MARSHALL & POOLE

CHARTERED SURVEYORS, AUCTIONEERS,
ESTATE AGENTS & VALUERS
COVERING SHROPSHIRE, MID & WESTWALES:

AMC
AGENT

one of FUW Agents for the AMC
Please contact us for a discussion about what
AMC can do for you

Tony Evans - Newtown - 07764 663190
Rob Hudson - Welshpool - 07764 663185
Other offices at Aberystwyth, Llanidloes,
Oswestry, Machynlleth, Tywyn, Rhayader

MEIRIONNYDD

Cyfarfod Cangen Edeyrnion

Cynhaliwyd cyfarfod cangen Edeyrnion o'r Undeb (ardal ddwyreiniol Meirionnydd) ar ddechrau mis Chwefror yn y Bryntirion, Llandderfel. Cafwyd cyfarfod gwych, gyda Uwch Swyddog Polisi Dr Hazel Wright o'r Brif Swyddfa yn siaradwraig wadd. Yn ei chyflwyniad, bu'n canolbwyntio ar y prosiect Clafr, Gwaredu BVD, y diweddaraf efo TB, a son am reolau masnachu eleni ar ôl i ni adael yr Undeb Ewropeaidd. Diolch yn fawr iawn i Rhys Jones, Llawrcilan, Llandrillo am gadeirio. Richard Williams, Tyfos, Llandrillo wnaeth dalu'r diolchiadau.

The Edeyrnion Area (eastern area of Meirionnydd) branch meeting was held at the beginning of February at the Bryntirion Inn, Llandderfel. It was an excellent meeting, with Senior Policy Officer Dr Hazel Wright from Head Office present as guest speaker. In her presentation, she outlined the work on the Sheep Scab project, Gwaredu BVD, TB and the trade arrangements now that we have left the EU. Many thanks to Rhys Jones, Llawrcilan, Llandrillo for chairing the meeting. Richard Williams, Tyfos, Llandrillo thanked everyone for attending.



Rhys Jones, Dr Hazel Wright a Richard Williams.

01686 626889

montgomeryshire@fuw.org.uk

MONTGOMERYSHIRE

The new face of HCC Campaign

Congratulations to Caryl Hughes, (pictured right), Montgomeryshire's Younger Voice for farming committee representative, as she has been chosen by Hybu Cig Cymru - Meat Promotion Wales (HCC) to star in their new nationwide campaign promoting PGI Welsh Lamb and Welsh Beef.

The £250,000 campaign was announced in November 2019 by HCC Chair Kevin Roberts at the annual HCC Conference and will focus on Welsh red meat's sustainable qualities. The campaign will include radio and tv advertising, on-demand tv advertising, print advertising and media partnerships.

It will also feature core messages around Wales' sustainable red meat production focusing on elements such as - landscape, climate and water usage.

As a County we can't think of a better person to lead this new campaign on behalf of the agricultural industry - da iawn a phob llw!



SAF 2020

Are you a FUW member? Do you need help with SAF? Let us take the stress of filling the form out, book your free appointment today. Contact the office on 01686 626889. We provide this free service exclusively to all paid-up members as part of their membership package.

01437 762913

pembrokeshire@fuw.org.uk

PEMBROKESHIRE

Pembrokeshire Rural Crime teams

We thought that it would be useful to remind you of the contact details for the Rural Crime Teams in Pembrokeshire.

Mid and South Pembrokeshire
PCSO Jude Parr 8015 - Tel: 07422 076690

North Pembrokeshire
PCSO Esther Davies 33 -Tel: 07580 818103
PCSO Caryl Griffiths 8030 - Tel: 07422 076635

However, please remember that in the event of an emergency that requires immediate assistance you should dial 999.

BPS Entitlements for 2020

If you want to buy or sell BPS entitlements for a 2020 claim don't forget that the deadline for trading is 30 April 2020.

If you require any advice on this issue please phone us on 0143 762913.

Congratulations Marion



At our Annual Business Conference held in Aberystwyth recently Marion Davies, Senior Administrative Assistant, received recognition for her 25 years service to the Union, congratulations Marion! She is pictured with FUW President Glyn Roberts.

County meetings

We are always looking for additional members to join our County Executive Committee.

The Committee discusses the latest things happening within the industry and provides feedback to our Policy department on the issues of the day. We usually meet on the first Tuesday of the month either in Haverfordwest or in Crymch and are always keen for new voices to

come along to join our discussions. Don't worry if you think that you wouldn't be able to manage every meeting as any input which you could provide would be gratefully received.

If you would be interested in joining us or would like to find out a little bit more please give us a ring on 01437 762913, or e-mail pembrokeshire@fuw.org.uk

Upcoming EOI Window Details

Scheme	Summary	Window closes
Enabling Natural Resources and Well-being Scheme	This scheme offers support to businesses for projects which work towards the Wellbeing of Future Generations Act. It works towards the 6 priorities of Rural Development i.e. conserving and enhancing wildlife and biodiversity, therefore activities could include improving and enhancing local environment quality.	13 March 2020
HCC Hill Ram Scheme	The second expression of interest window is now open for HCC's Hill Ram Scheme. The scheme offers the chance for Welsh hill farmers to improve performance recording with the use of DNA parentage technology to help improve flock performance. There are currently 29 flocks across Wales participating in the scheme and HCC is now looking to recruit a further 20 to join the scheme. Those interested should contact the HCC on 01970 625050.	31 March 2020
Farming Connect Agri Academy	The application window for the 2020 Agri Academy is now open. The Academy provides training, mentoring and support in 3 sessions throughout the programme. There are 2 separate elements, the Business and Innovation Programme, and the Junior Programme.	31 March 2020
Glastir Small Grants Claim Deadline	The deadline to claim for Glastir Small Grants work is 31 March 2020. By this date, all applicants must have completed the practical work, taken geotag photos and filled in the claims form. Boundaries such as hedges and fences must be measured to ensure the claimant does not over-claim.	31 March 2020
Dŵr Cymru Pesticide Scheme	Dŵr Cymru are relaunching their free and confidential Pesticide Disposal Scheme for farmers, growers, gamekeepers, foresters and land managers to safely dispose of any wanted or out of date pesticides and herbicides. Participants that took part in 2019 can take part again in 2020.	Register between 1 - 31 March 2020
Farm Business Grant	The 7th expression of interest window for the Farm Business Grant opened on 2 March 2020. In order to be eligible, scheme members will have to attend a Farming Connect event - 'Farming for the Future', if they have not already attended one in the past.	10 April 2020
BPS Transfer of Entitlements	You can now transfer BPS entitlements through sale, lease or inheritance. It must be accessed through the RPW online account. The recipient of entitlements transferred by sale or lease must meet the Active Farmer requirements.	30 April 2020

Work underway to tackle ash dieback disease

WORK is underway in Carmarthenshire to tackle a serious fungal disease which is affecting ash trees across the country.

It is estimated that 90 per cent of ash trees could die from ash dieback disease for which there is currently no known treatment.

The fungus infects the leaves and spreads through to the branches, causing the tree to eventually die. Dead branches and the trunk can become very brittle causing it to fall, posing a serious risk to both people and property.

The council is taking a risk-based approach to tackling the issue and ash trees along all Class 1 and 2 roads, the county's busiest roads, have been surveyed. Trees showing at least 50 per cent of ash dieback in their crowns and which pose a risk to road users will have to be felled.

The council will also be writing to private landowners with trees alongside Class 1 and 2 roads offering guidance and advice on how to deal with ash dieback.

Executive Board Member for the Environment Cllr Hazel Evans said: "This is a very sad situation, but unfortunately we have no choice but to remove the trees if they have the



disease and are in a location which poses a risk to public safety.

"It is a serious problem for both councils and other landowners across the UK and a lot of work is being carried out. It is important we raise awareness of the disease, particularly with landowners to offer guidance and advice, as well as the public in general.

"There will be a need for new trees to be planted to compensate for the loss of ash trees in the county, and we will be actively seeking funding to support re-planting projects."

Surveys are also being carried out on ash trees on other council-owned land such as schools, car parks, council housing areas, safe routes, cycle paths and public rights of ways. Surveys on ash trees alongside Class 3 and 4 roads will follow.

Symptoms of ash dieback disease are usually first apparent in the crown of the tree, with leaves turning black and falling in late summer rather than autumn, there can also be visible lesions above and below the point where the branches join the trunk of the tree.

For further information including frequently asked questions and advice please visit the website carmarthenshire.gov.wales/ashdieback

Aldi's commitment much needed boost for industry



From left, Minister for Environment, Energy and Rural Affairs, Lesley Griffiths, Aldi UK Buying Director Nick Rose and FUW Deputy President Ian Rickman.

NEWS that one of Britain's largest supermarkets, Aldi, has committed to stocking a brand new range of PGI Welsh Beef products across over 50 stores, has been hailed as a much needed boost for the industry.

Speaking after the official announcement was made in Cardiff on February 10, FUW Deputy President Ian Rickman said: "This is a most welcome step in the right direction. Given the uncertainty our farmers face over future trade deals, supporting local suppliers is key to ensuring we have thriving, sustainable family farms here in Wales.

"Farmers in Wales produce excellent, sustainable, quality PGI Welsh Beef and PGI Welsh Lamb and we are confident shoppers won't be disappointed by the new range. I can only encourage other supermarkets, restaurants, cafe's and anyone else who is involved in the food supply chain to follow suit."

Since Tuesday, February 11 a range of thirteen different products, including a selection of Fillet, Ribeye and Sirloin Steaks, both 28 and 21 Day matured, as well as roasting joints and diced beef, are available in over 50 stores across Wales.

Children's photography competition

Win a £50
Argos
voucher!

Are you a photographer in the making?

Then this is the competition for you!

Give us an idea of what farming is like during Spring through your camera lens!

Do you want to be in with a chance of winning a £50 Argos voucher and have your 'Farming in Spring' themed photograph printed in *Y Tir*?

To enter all you have to do is email your photograph to ytir@fuw.org.uk by May 20th

Age category - 8 - 14 years

Good luck!

The Rules

- 1 The photo must be taken by the person entering.
- 2 We can only accept digital images.
- 3 Make sure the file size of each is at least 1Mb and is JPEG format.
- 4 Include your name, address and date of birth with each entry.
- 5 The FUW reserves the right to use any entry for marketing material.



Su'mae o swyddfa Caernarfon

Gwynedd Watkin

Uwch Swyddog Gweithredol Sirol

Pa mor hir gyda'r Undeb? 28 mlynedd, 136 diwrnod (ar y 10fed o Chwefror!!!) ac ychydig o oriau, yn ddibynol ar faint o'r gloch y byddwch chi'n darllen yr erthygl yma :-)

Swyddi/addysg flaenorol? Ysgol Gyfun Ystalyfera, Coleg Amaethyddol Cymru (WAC) a gweithio ar ffermydd llaeth

Bywyd cartref (priod/sengl ac ati)? Mewn perthynas gyda Delyth, a gydag un plentyn o fy mhriodas cyntaf, sef Elain

Diddordebau/gweithgareddau eraill y tu allan i'r gwaith? Pel-droed, rygbi ac unrhyw chwaraeon a dweud y gwir

Beth mae eich swydd yn ei olygu? Gwasanaethu aelodau gan eu cynorthwyo gyda phob math o broblemau gwahanol. Hefyd lobbio gwleidyddion ar eu rhan a'u cynrychioli mewn cyfarfodydd o bob math gyda'r Awdurdodau Lleol, Parc Cenedlaethol, CNC etc

Cais mwyaf anarferol? Cais am docynnau oddi wrth aelod i weld gêm Man U!!! Hilariws!!!! Uffar o beth od i ofyn i gefnogwr ARSENAAAAAAAAAAALLLLLLLLLLL :-)

Beth ydych chi'n fwynhau fwyaf? Cael hwyl gyda'r aelodau a cheisio sicrhau y byddwn wedi chwethin o leiaf unwaith ym mhob cyfarfod. Ma bywyd llawer rhy siriys ar adegau!

Beth yw'r rhan bwysicaf o'ch swydd? Sicrhau ymateb i bob ymholiad cyn gynted a phosib

Beth fydddech chi'n ei newid i wneud eich swydd yn well? Peidio gorfod delio gyda dogfennau ymgynghorol!!!

Diwrnod 'typical'? Mor amrywiol o fod yn y swyddfa drwy'r dydd i fod allan o gwmpas y Sir Gaernarfon fendigedig, ac ambell waith sir Fôn pan fo angen. Gall unrhyw beth godi mewn galwad cwbl annisgwyl, o ddelio gyda chŵyn yn erbyn un o'r gwasanaethau cyhoeddus i gwblhau ffurflenni bob dydd trwy mis Mawrth hyd at ganol mis Mai

Unrhyw beth arall? Rwy'n ystyried fy hun yn lwcus iawn i fod yn mwynhau fy ngwaith bob dydd. Ambell i ddiwrnod yn fwy dyrys nag eraill ond byddwn yn gweithio'n dda fel tîm yma yn Sir Gaernarfon er mwyn sicrhau y gwasanaeth gorau posib i'r aelodau.



Delyth Edwards

Swyddog Gweithredol Sirol

Pa mor hir gyda'r Undeb? Tynnu am 6 mlynedd

Swyddi/addysg flaenorol? Gweithio fel Technegydd Theatr, ac fel Rheolwr Llawr ar nifer o gynhyrchiadau i gwmnïau teledu

Bywyd cartref (priod/sengl ac ati)? Mam i Jac sy'n 9 oed a mewn perthynas

Diddordebau/gweithgareddau eraill y tu allan i'r gwaith? Mwynhau chwarae pel droed 5 bob ochr bob nos fawrth, mynd i'r Gym, mynd allan am fwyd, a gwario amser gyda pobl sy'n sbesial i mi

Beth mae eich swydd yn ei olygu? Bod o wasanaeth i'r aelodau

Cais mwyaf anarferol? Diwrnod cyntaf yn y gwaith gyda bwch gafr wedi dianc a Dafydd P - deud dim mwy!!! Dwi dal i ddisgwyl am yr amser perffaith i dalu'r pwyth yn ôll!

Beth ydych chi'n fwynhau fwyaf? Cyfarfod a sgwrsio gyda'n haelodau. Cael boddhad mawr wrth fod o gymorth gan ddatrys problem sydd gan yr aelod

Beth yw'r rhan bwysicaf o'ch swydd? Bod o gymorth i'r aelodau a bo nhw yn gadael ar ôl sgwrs ffôn neu ymweliad i'r swyddfa yn hapus gyda'r gwasanaeth a gafwyd

Beth fydddech chi'n ei newid i wneud eich swydd yn well? Cael cyfiethydd wrth law pan ma Gwynedd Watkin o gwmpas!

Diwrnod 'typical'? Galwadau yn ymwneud â RPW, BCMS, ymholiadau gan aelodau. Mae bob diwrnod yn wahanol i fod yn onast, ac mae trefn y dydd yn gallu newid gyda un galwad ffôn!

Unrhyw beth arall? Mae'n gyfnod pryders y ffermwyr Cymru ar hyn o bryd gyda Brexit a ballu, ac mae'n bwysig i'n haelodau ddeall bod o'n bwysig trafod eu problemau, gnawn ein gorau glas i fod o gymorth.



Dylan Evans

Uwch Weithredwr Yswiriant

Pa mor hir gyda'r Undeb? 21 mlynedd mis Awst ma

Swyddi/addysg flaenorol? Gweithio i gwmni Arwerthwyr, Farmers Marts, Dolgellau - fel Clerc

Bywyd cartref (priod/sengl ac ati)? Priod â Nia ag un ferch Ffion

Diddordebau/gweithgareddau

eraill y tu allan i'r gwaith? Ffermio, darts a rygbi

Beth mae eich swydd yn ei olygu? Delio gyda cwsmeriaid gyda'u materion yswiriant boed ar y ffôn neu wyneb yn wyneb

Beth ydych chi'n mwynhau fwyaf? Diwrnod Cyflog!! Cyfarfod cwsmeriaid a cael busnes newydd

Beth yw'r rhan bwysicaf o'ch swydd? Threfnus ag cydwybodol

Beth fydddech chi'n ei newid i wneud eich swydd yn well? Llai o waith papur i rhyddhau fi fynd allan o'r swyddfa fwy aml

Diwrnod 'typical'? Allan - ymwled â cwsmeriaid i drafod adnewyddu polisïau, neu llenwi ffurflenni "claims".



Dafydd Peredur Jones

Uwch Weithredwr Yswiriant

Pa mor hir gyda'r Undeb? 18 mlynedd

Swyddi/addysg flaenorol? Gweithio i gwmni prynu a gwerthu peiriannau fferm Arfon Roberts a cyn hynny peiriannydd ceir mewn modur

Bywyd cartref (priod/sengl ac ati)? Priod ers 26 mlynedd gyda Greta a dau o blant Sabrina a Dylan

Diddordebau/gweithgareddau eraill y tu allan i'r gwaith? Pysgota, aelod o Gôr Corwst, aelod o barti Hogia Sbyty, cadeirydd cyngor Cymuned, aelod o gwmni drama Padog, ysgrifennu ac actio sgetys

Beth mae eich swydd yn ei olygu? Holl weithgareddau yswiriant a chymorth i aelodau gyda eu ymholiadau fel rhan o dîm Sirol Caernarfon

Cais mwyaf anarferol? Mynd a dannedd gosod oedd wedi torri i'r deintydd ar ran aelod!

Beth ydych chi'n mwynhau fwyaf? Cysylltu gyda cwsmeriaid

Beth yw'r rhan bwysicaf o'ch swydd? Rhoi sicrwydd i'r cwsmeriaid a'i trîn fel y buasau rhywun yn hoffi cael ei drîn eu hun

Beth fydddech chi'n ei newid i wneud eich swydd yn well? Hoffwn fod gyda mwy o amser i ymweld â chwsmeriaid yn lle bod ynghlwm i'r cyfrifiadur

Diwrnod 'typical'? Yn y swyddfa yn Llanrwst cyn 8 y bore, ymweld â chwsmeriaid adre tua 6.30yh

Unrhyw beth arall? Rwyf yn lwcus iawn o gydweithio fel rhan o dîm yn swyddfa Llanrwst ac yn falch o gymorth fy nghyd-weithwyr Gwyn, Sarah, Eleri, Heledd, Lora ac Angharad.



Elinor Lambrecht

Uwch Weinyddwr Yswiriant

Pa mor hir gyda'r Undeb? Bron i 9 mlynedd

Swyddi/addysg flaenorol? Ymgynghorydd Yswiriant gyda CDH Insurance & Finance Consultants am 30 mlynedd - dod i weithio i'r

FUW pan gaeodd CDH fel cwmni

Bywyd cartref (priod/sengl ac ati)? Priod a Andre', 2 lysferch (Fiona a Catrin), tair wryes (Erin, Elliw a Siwan) ac un wŷr (Sion)

Diddordebau/gweithgareddau eraill y tu allan i'r gwaith? Cerdded, carafanio a darllen

Beth mae eich swydd yn ei olygu? I ddarparu cymorth gweinyddol i'r Gweithredwr Yswiriant ac i fod yn bwynt cyswllt cyntaf i'r cwsmer yn y swyddfa

Beth ydych chi'n mwynhau fwyaf? Gweithio hefo criw da yn y swyddfa

Beth yw'r rhan bwysicaf o'ch swydd? Darparu gwasanaeth o ansawdd uchel i'r cwsmer, a bod yn drefnus

Beth fydddech chi'n ei newid i wneud eich swydd yn well? Gwella y gwasanaeth rhyngwyl

Diwrnod 'typical'? Delio gyda e-byst, prosesu polisïau a chwblhau'r holl waith papur.

MEAT MATTERS

Last minute lambing tips

by Dr Heather McCalman, RMDP Programme Coordinator

I'M sure for many FUW members, March dictates a blur of late nights, lambs and lactation. Lambing is both an exhilarating and exhausting time of year and most definitely an important time of year.

The Stoc+ project, which is part of the Welsh Government and EU funded Red Meat Development Programme, is promoting proactive animal health planning on beef and sheep farms and lambing is a time of year when managing flock health is key to looking after the bottom line.

HCC, alongside the other bodies and the Universities of Bangor, Edinburgh and Liverpool, has been involved in research that shows ewe nutrition is vital for a successful lambing, particularly ewes' protein status

Ewes' nutrition also affects their colostrum production, which is known to be vital to lambs' short and long-term health. It is vital that lambs get enough, good quality colostrum; many refer to the 3 Q's when it comes to colostrum: Quantity, Quality and Quickly!

The first hours of a lamb's life are vital and the most important time to be receiving colostrum as after 24 hours lambs do not absorb the immunoglobulins (antibodies) from the ewes. For healthy lambs, 50ml per kg lamb weight within two hours of birth and a total of 210-290ml per kg are needed in the first 24 hours.

Colostrum is equally important to cattle as well with the added 'Q' of 'quietly'. For cattle it's important that calves receive colostrum in a calm environment to help them absorb antibodies. Their first feed should be 3 litres and should occur in the first 2 hours after birth.

HCC is one of the many organisations supporting the



'Colostrum Is Gold' campaign run by RUMA. Check out the website colostrumisgold.org to find out more about how colostrum can improve your livestock health and growth rates.

Other key considerations for indoor lambing are: hygiene and group size. Limiting ewes to groups of 50 can prevent bullying, improve feed intake and reduce stress and cleaning, disinfecting and replenishing bedding really pays off particularly in the later stages of lambing as it can minimise infection build up.

Keeping a note of losses, although may seem a little depressing, can actually provide a valuable insight into any issues in the flock and can be used to plan how to overcome these in the following year. Using records to help guide health planning is something many farmers on the Stoc+ project are doing this year.

The final tip I have to share is that you look after yourself this lambing and calving period. It's a time when farmers often put their livestock first but try to rest when you can and eat regularly and healthily! Wishing you all a successful lambing season.

Rwy'n siŵr i lawer o aelodau FUW, mae mis Mawrth yn golygu nosweithiau hwyr o ŵyna. Mae ŵyna yn amser gwefreiddiol a blinedig ac yn bendant yn amser pwysig o'r flwyddyn. Mae prosiect Stoc +, sy'n rhan o Raglen Datblygu Cig Coch a ariennir gan Lywodraeth Cymru a'r UE, yn hyrwyddo cynllunio iechyd anifeiliaid rhagweithiol ar ffermydd cig eidion a defaid ac mae ŵyna'n adeg o'r flwyddyn pan mae rheoli iechyd diadell yn allweddol. Dymuna HCC dymor ŵyna llwyddiannus i aelodau'r FUW.

PROPERTY MATTERS

Rail company ordered to clean up its ditches

by Philip Meade of Davis Meade Property Consultants



NETWORK RAIL has been ordered to clean up its ditches after the Agricultural Land Tribunal ruled in favour of a farmer whose land adjoining railway land was compromised by poorly maintained ditches.

The farmer is a client of ours and after a six-year dispute with Network Rail over their ditches the Agricultural Land Tribunal decided that an Order should be made for NR to clean all their ditches adjoining the farmer's land as had been initially requested several years ago.

This common sense approach re-balances the power between Network Rail and farmers who adjoin railway land who are entitled to have the ditches, which drain their land but to which they cannot get access to, maintained.

It is an important decision because it hopefully means that Network Rail will be more pragmatic in their dealings with other farmers similarly affected in future.

Flooded land is a serious issue. It is more than just about damage to the crops and soils within the field because it can cause a breach of cross compliance and jeopardise future support payments.

In this particular case part of the downfall for Network Rail was that it had promised three years previously to do the work on the ditches but in fact had failed to do so.

The railway company had largely ignored the problem because the tracks themselves were not affected but, under the Land Drainage Act, any land owner is entitled to apply for such an order if their neighbour (whoever that may be) is not maintaining their ditches properly.

Although a tribunal rarely awards costs, in this case it did and agreement has since been reached over a contribution to the farmer's costs.

We are advising farmers with similar problems to contact us or seek advice from their land agent. Network Rail will have to be more wary in future about maintaining their ditches and farmers with land alongside the rail network may need to remind them of their obligations.

Philip Meade can be contacted on 01691 676144 email: philipmeade@dmpcuk.com

Gorchymnydd Network Rail i lanhau ei ffosydd ar ôl i'r Tribiwnlys Tir Amaethyddol ddyfarnu o blaid ffermwr sydd â thir yn ffinio â thir y rheilffordd. Cafodd tir y ffermwr ei beryglu oherwydd cyflwr gwael y ffosydd. Mae'r ffermwr yn gleient i Davis Meade ac ar ôl anghydfod chwe blynedd gyda Network Rail dros eu ffosydd, penderfynodd y Tribiwnlys Tir Amaethyddol bod angen i Network Rail lanhau'r holl ffosydd sy'n ffinio â thir y ffermwr fel y gofynnwyd yn y lle cyntaf sawl blwyddyn yn ôl. Mae'r agwedd synnwyr cyffredin hon yn ail-gydbwyso'r pŵer rhwng Network Rail a ffermwr sydd â thir yn ffinio â thir rheilffordd, ac mae ganddynt yr hawl i ddisgwyl bod y ffosydd, sy'n draenio'u tir, ond nid oes ganddynt fynediad iddo, yn cael ei gynnal yn gywir.

MERCHED MEWN AMAETH

Y tywydd yn rhywbeth na fedrwn ei reoleiddio

gan Tegwen Morris, Cyfarwyddwraig Cenedlaethol, Merched y Wawr

WRTH feddwl am fis Mawrth gobeithio y bydd y dywediadau yma yn wir; "Os ym Mawrth y tyf y ddôl, gwelir llawnder ar ei ôl". Mae pob argoel o'r gwanwyn yn llonni ein calonau, o dyfiant newydd i ddechreuadau newydd. Mae'n bwysig cefnogi cymunedau cefn gwlad a thrwy hynny sicrhau fod ein budd yn mynd i mewn i'r economi lleol. Mae gennym gannoedd o aelodau a fydd yn mynychu Ciniawau'r Llywydd ym Mhenfro a Deganwy eleni.

Yn dilyn ein his-bwyllgorau cenedlaethol ym mis Chwefror gwelwyd fod angen mawr i longyfarch rhai sy'n defnyddio'r Gymraeg yn rheolaidd, tra bod rhai sefydliadau eraill yn peri gofid mawr o fewn ein cymunedau.

Cawsom gyflwyniad gan gynrychiolydd o fanc y NatWest am ddiogelwch ac roedd yr hyn a gyflwynwyd ganddi yn ddigon i'n dychryn. Os ydych ar unrhyw bwynt yn cael galwad gan rywun sy'n honni ei bod o'r banc ac yn gofyn am eich manylion i drosglwyddo arian - peidiwch byth a phwyso unrhyw rif, yn hytrach rhwch y ffôn i lawr ac ewch i mewn i'ch banc lleol (os oes un) rhwch wybod i'r heddlu ar 101 a chofiwch gysylltu gyda "Action Fraud" ar 0300 123 2040.

Hefyd os digwydd i chi gael galwad gan yr HMRC (llinell gyswllt Gymraeg 0300 200 1900), Microsoft neu unrhyw sefydliad tebyg - cofiwch beidio ag ymateb trwy wasgu botwm, peidiwch â ffonio yn ôl a pheidiwch â rhannu eich gwybodaeth. Mae yna rifau ffôn uniongyrchol i'r rhain i gyd ar gael - defnyddiwch hwy a chysylltu i weld a'i hwy sydd wedi cysylltu gyda chi.

Wrth ystyried Haf hir melyn tesog, efallai yn wir mae "Fel bo Mawrth y bydd yr haf". Dwi yn cofio meddwl yn blentyn am fis Mawrth fel y mis cyffrous pan fyddwn yn brysur yn wyna a'r defaid penfrith Beulah yn geni'r ŵyn tlysaf erioed ac ar ôl bod allan yn y sied yn dadleth/dadmer pibellau oedd wedi rhewi cael mynd i mewn a bwyta pwddin reis poeth neu wyau Pasg siocled. Nid oeddwn erioed wedi clywed y dywediad "Niwl ym Mawrth, rhew ym Mai", a gobeithio yn wir nad oes gwirionedd ynddo o ystyried faint o niwl trwchus a gawsom ym mis Ionawr yn y Canolbarth.

Roeddwn yn aml yn ystyried y ddihareb "Os daw Mawrth i mewn fel oenig, allan â fel llew mileinig", yn un frawychus o ran darlun, ond o gofio nôl i ddyddiau plentyndod roedd yna lawer o wirionedd. A gallwn wneud llawer o bethau y dyddiau yma gyda thechnoleg yn newid o ddydd i ddydd ond erys y tywydd yn rhywbeth na fedrwn reoleiddio na ddylanwadu fawr arno!

Gobeithio yn wir y bydd yr haul yn gwenu a'r tywydd yn garedig i amaethwyr ac yn wir i bob un o fewn ein cymunedau gyda'r Gwanwyn yn cael croeso a'r Haf ar y gorwel.

As we look forward to the arrival of Spring, we're all craving for the weather to improve and start seeing everything growing again. Our members have had a presentation from NatWest Bank on security and warns everybody to be vigilant and aware of telephone scams. Fingers crossed for sunshine this spring and that summer is on the horizon!

'I'm lucky to be alive'

YOUNG farmer Beca Glyn (*pictured right*), had a serious accident on a quad bike in March 2018 in which she sustained a fractured skull, neck injuries and major bruising.

Although, this Aberystwyth University graduate made an amazing recovery and returned to farming after what she describes as nine long months of rest, physio and rehabilitation, she says life may never be quite the same. Her medical team are still unsure whether she will ever regain her sense of taste, smell and ability to sleep through the night.

Beca (26) was helping herd sheep from a field, across a small country road and into a shed at the family farm in Betws y Coed where her family run a flock of 1,000 sheep and herd of beef cattle.

"The sheep started moving in the wrong direction, I panicked and in that split second, thought the dog may not manage to bring the sheep back the right way but if it did, I risked driving into them."

She swerved sharply too quickly, tipped the quad bike which landed on top of her and hit her head on the road. She wasn't wearing a safety helmet - something she regrets every single day.

Thanks to the quick thinking of her dad Glyn, FUW President, and a neighbour, who were able to lift the bike off her and call the emergency services immediately, both the land and air ambulances were at the scene very quickly. Having sustained concussion, Beca doesn't remember any of the detail at the roadside, but pays tribute to the expertise of the paramedics and to the A&E team at Ysbyty Gwynedd in Bangor where she was taken by the land ambulance on a blue light journey.

Despite the ongoing effects, which she hopes will improve, Beca has made an excellent recovery and is now on a mission to raise the profile of farm safety and promote safe working practices, especially when it comes to driving farm vehicles.

"I know I'm very lucky to be alive and I've made huge progress, but I also know that if I had been wearing a helmet and undertaken training on driving



an ATV (All Terrain Vehicle) safely, I may not have ended up in hospital at all.

"I would give anything not to have struggled with months of exhaustion after the slightest bit of effort, and I would still be able to enjoy the wonderful smell and taste of a roast lamb dinner cooked with garlic and rosemary or feel that fantastic sense of anticipation when I'm out in one of my favourite tapas restaurants!

"So much changed after my accident, and despite trying different remedies and therapies, disrupted sleep patterns still affect me every day."

These days, alongside day-to-day farming and her involvement with Ysbyty Ifan YFC and Eryri YFC, which she currently chairs, Beca is also in demand as a 'farm safety' advocate at various rural events in Wales. She is determined to do all she can to raise awareness of farm safety and promote the availability of specialist training which can significantly reduce the risk of on-farm accidents.

"Almost everything we do on the farm has associated risks, from handling animals to operating machinery and from dealing with pesticides to driving tractors and ATVs, but provided you have had training, you will know what steps to take to reduce the risks of accidents.

"You can't put a price on your health and wellbeing, as I found out the hard way."

Farming Connect offers eligible individuals registered with Farming Connect training on a wide range of practical, business and technical topics, subsidised by up to 80 per cent.

Visit www.gov.wales/farmingconnect for a list of courses, training providers and guidance on how to apply for subsidised training. For guidance on all aspects of farm safety, visit www.hse.gov.uk

Farming Connect is delivered by Menter a Busnes and Lantra Wales and funded by the Welsh Government and the European Agricultural Fund for Rural Development.

Top tips for driving an ATV safely

- * Make sure all riders receive adequate training
 - * Always wear a suitable helmet
 - * Don't carry passengers (unless the quad bike is designed for passengers)
 - * Children under 13 years old are prohibited from using an ATV at work. Over-13s should only ride ATVs - of an appropriate size and power - after formal training on a low-power ATV
 - * Carry out safety checks and maintenance in accordance with the manufacturer's recommendations, e.g. regularly check tyre pressures, brakes and throttle
 - * Secure loads on racks and make sure they are not over-loaded and evenly balanced
 - * Take extra care with trailed or mounted equipment and understand how they affect stability
 - * Stick to planned routes, where possible and walk new routes if necessary to check for hidden obstructions, hollows or other hazards.
- For side-by-side ATVs the same legal requirements apply plus messages that:
- * Users should select a machine fitted with a Roll Over Protective Structure (ROPS)
 - * The driver and passengers should wear lap belts/seat restraints.

Llamas and alpacas as guards - No prob-llama!

by Dr Cate Williams; Farming Connect Knowledge Exchange Hub, IBERS, Aberystwyth University

WITH lambing season in full swing, some farmers may be facing concerns about flock safety - particularly from predation by foxes, unfamiliar dogs or even badgers. Enter the guard alpaca or guard llama.

Alpacas and llamas hail from the camelid family and are more commonly used as pack animals in South America, where in addition to their strength and endurance, they are prized for their fleece. However, these animal are highly territorial and have evolved to react drastically and often aggressively to canines, a behaviour which enabled them to thrive in South America.

Extremely alert and aware of their surroundings, in the event of danger, both alpacas and llamas will issue an alarm call. If this loud, sharp cry is insufficient, they will often actively approach the source of danger in an effort to intimidate, walking or running towards it, giving chase, spitting or kicking. Such behaviour extends to the protection of species other than their own too - more often than not, a single alpaca/llama will bond with the flock and accept the group as their own.

Anecdotally, it is thought that this process is most effective if the guard animal is introduced just prior to lambing. Research suggests that a 'bonding' period of approximately a week with a small mob of 10-20 sheep in a small space is crucial. Further studies suggest that multiple guards are not as effective as one, as they are more likely to bond with one another and ignore the livestock.

It is also recommended that males are gelded to avoid unwanted sexual behaviour, but once gelded, they tend to offer even better protection than a female. Llamas over the age of two years have found to be most effective when compared with younger animals. It is important to note that aggression and guarding behaviour does not extend towards humans, alpacas and llamas are naturally wary of people but with a routine will become more relaxed and familiar.

Llamas have been used as livestock guardians in the US for many years, protecting against coyotes on extensive ranches, but guard alpacas, in particular, are now making appearances in Australia, Ireland and the UK. Studies have found that the presence of guard alpaca or llama reduces fox predation by 13 per cent and another American survey found a reduction of 10 per cent in losses of sheep/lambs. The fleece may also be of great value if shorn correctly - the fleece of the alpaca is hypoallergenic and llamas produce a fine and soft undercoat, both of which are sought after in the wool market.

Llamas and alpacas are hardy and easy to care for, requiring almost the same husbandry as sheep (despite having a different digestive system) with no need for any special feed. Free access to grass or hay, fresh water and in some cases a vitamin and mineral supplement is ample. Llamas and alpacas do need to be wormed regularly, 2-4 times per year depending on geography and parasite load.



Asulam for bracken control - what you need to know

THE Chemical Regulation Division for the Health and Safety Executive has confirmed that an Emergency Authorisation (EA) for the use of Asulam for bracken control will be issued for the 2020 season.

There are two significant differences from previous EAs:

- The approval applies to applications from a **helicopter only**. Application from hand-held (knapsack sprayers) or ground-based equipment will not be authorised.
- For aerial spraying, the required buffer zone for surface water bodies will increase from 50m to 90m.

The implications of these changes and the information that will need to be collected to support a further EA application will be considered by the Bracken Control Group (BCG) and further guidance will be provided.

Anyone planning to apply Asulam next season must read the terms and conditions contained in the draft EA Approval document. The final version of the approval will be issued before the start of the EA period.

The final version must be checked before any Asulam is applied; the BCG will aim to highlight any changes from the draft on their website: www.brackencontrol.co.uk/asulam

Key dates for 2020

18 May 20	Start of the Emergency Authorisation period of 120 days.	Storage, promotion, sales, and transfer authorised.
1 Jul 20	Application of Asulam can commence.	
14 Sep 20	Expiry date: For sale & distribution and use of stocks.	Storage of stocks can continue, and stocks can be moved for disposal. Asulam cannot be applied after this date.
31 Oct 20	Expiry date: For storage and disposal of stocks.	It will be illegal to store Asulam after this date.

SsangYong is big for the class

by Huw Thomas, Vice Chairman, Welsh Motoring Writers

ESTABLISHED in 1954, SsangYong ('Two' or 'Twin Dragons' in Korean) is the country's oldest vehicle manufacturer. However, it was hit hard by the Asian economic crisis of 1997-89. A number of unsuccessful tie-ups led, eventually, to court administration and acquisition by the Indian conglomerate Mahindra & Mahindra in 2011.

Traditionally, SsangYong's 4x4s have been tough off and on-road vehicles built on a separate chassis with selectable four-wheel drive and transfer box for high/low ratio gearing. This is still the case with the larger Rexton range and Musso pick-ups.

SsangYong's venture into the compact SUV/crossover class came with the 2010 Korando. It opted for unitary body construction offering both front and 4x4 drive. Smaller Tivoli and a (longer) XLV variant followed in 2015 and 2016.

An all-new Korando debuted at the Geneva Show last March and went on sale here in September. Asking prices range from £19,995 to £31,995 with a choice of a 1.5 GDI-turbo 163ps petrol or 1.6 Turbo-Diesel 136ps engine.

Manual and automatic gearboxes are both 6-speed. Four-wheel drive is available on two of the four models with the Diesel engine. Both are auto-only here regrettably. But they do offer a good-for-the-class 2-tonne maximum braked trailer weight*.

On-road and for normal conditions 4x4 models are still predominantly front-wheel drive. All-Wheel-Drive mode monitors progress and, via the 'electronics' (braking, traction, etc.), channels drive to each wheel as

required. It adapts to off-road conditions aided by Hill Descent Control.

Drive can be locked 50-50 front-rear should things become more difficult and will stay in this mode up to 25mph (40km/h) before switching to 'Automatic'. Lock-up will resume of, its own accord, should the speed fall back below 25mph - quite useful.

Although fit and finish is much improved (inside and out) the Korando is up against tough competition - Nissan Qashqai, Kia Sportage, Skoda Karoq and SEAT Ateca, for example, are the leaders of a very large pack. But the SsangYong is big for the class benefitting rear seat passengers and offering a sizeable load-space. To make the best of this the rear seats fold down flat and a two-level floor eases loading.

Model Line-Up: 'ELX' £19,995, 1.5GDI-T petrol, 2WD; 'Ventura' £22,995, 1.5-2WD; 'Pioneer' 1.6TD (auto), 2/4WD, £26,495/£28,495; 'Ultimate' 1.5-2WD Man £26,495 (Auto £27,995), 1.6TD 4WD Auto £31,995.

Facts & Figures: Ultimate 4WD; 112mph; 0-62mph 12secs; 43.5mpg (official); 39-40 test/trip computer average ... CO2 171g/Km; Road Tax £145 (1st Yr £855 in purchase price); Ins Grp 26; MBTW 2,000kg*; Warranty - 7 years/150,000 miles.

Verdict: Competitively priced, best in class warranty (edging ahead of Kia) and well equipped. Cabin quality much improved if not in every aspect. Early days but residual values unlikely to match better known or 'premium' marques so a keen deal is key. Ride-roadholding is par for the course mostly but bad bumps/potholes can catch it out and the steering is a touch too light.



SsangYong Korando.



Volvo XC40.

Volvo XC40: £24,965 - £42,305; Another Capable Compact Tow-Car

European Car of the Year 2018 Volvo's XC40 compact SUV was reviewed here July 2019. Since then it has accumulated a raft of awards: new and used, retail and fleet. Caravan and Motor Home Club's "Towcar of the Year" trophy came late September. Each of 36 cars entered was assessed at the Millbrook auto industry test circuit.

The Diesel 2.0-litre D4 190ps All-Wheel-Drive model (2.1t braked trailer max) won its caravan category (1,400-1,500kg) and the overall prize; XC60 D4 won the 1,500-1,700kg class. AWD Volvos are auto-only here sadly. There is a front-drive manual D3 150 which could be good in AWD guise and petrol engines too (T3, T4 & T5). But D4 190 AWD remains the stand-out car with a realistic 40 mpg ... when not towing.

WALES LONGEST AND LARGEST SUPPLIER OF 4 DOOR PICK-UPS

FAMILY OWNED & RUN FOR OVER 50 YEARS



66 MITSUBISHI SHOGUN

DI-D SWB, DARK GREEN, ONE LOCAL OWNER, IMMACULATE, 12,000 MILES.



65 LAND ROVER DEFENDER

110 XS, ONE LOCAL OWNER FROM NEW, 7 SEATS, MINT CONDITION, ONLY 17,000 MILES.

TOYOTA PICKUPS - SUPPLIED BY US

- 19 HILUX INVINCIBLE 2.4 3.5 TONNE, TOWING CAPACITY, BALANCE OF WARRANTY, OUR DEMO, 2,000 MILES, T-BAR, LINER.
- 68 HILUX INVINCIBLE X, T-BAR, LINER ETC, ONLY 9,000 MILES.
- 18 HILUX INVINCIBLE X, WARRANTY UNTIL 14/05/23, 3.5 TONNE TOWING CAPACITY, LEATHER, SAT NAV ETC.
- 62 HILUX INVINCIBLE, 3L, LOCALLY OWNED, ONLY 57,000 MILES.
- 62 HILUX INVINCIBLE, 3L, IN BLACK.
- 10 HILUX INVINCIBLE, 3L, IN BLACK, LOCALLY OWNED.

CARS & VANS

- 62 CITROEN DISPATCH, 1,000, ONE LOCAL OWNER, FSH, NO VAT.
- 62 FORD FOCUS, TITANIUM X TDCI, SILVER.
- 61 VOLKSWAGEN PASSAT, DIESEL ESTATE.
- 06 MERCEDES BENZ C-CLASS, ELEGANCE SC, ONE OWNER, ONLY 31,000 MILES.

OTHER

- 60 SUZUKI SX4, SZ4, ONE OWNER, SERVICE HISTORY.
- 59 TOYOTA RAV 4 LTD ED, PETROL, LOCALLY OWNED, 63,000 MILES
- 58 MITSUBISHI SHOGUN, ELEGANCE, SWB, LOCALLY OWNED, MANUAL, GREY, LEATHER, SAT NAV, ETC.
- 57 JEEP PATRIOT, LOCAL, LOW MILES, BLUE.

FLYING THE SSANGYONG FLAG SINCE 2003

SSANGYONG

- 66 TIVOLI, ELX 1.6 ONLY 13,000 MILES, WITH SERVICE HISTORY, STILL UNDER MANUFACTURERS WARRANTY, £30 A YEAR TAX.
- 14 REXTON W, MANUAL, ONE LOCAL OWNER + DEMO, LOW MILES, SERVICE HISTORY
- 10 REXTON, II 270 SPR AUTO, LOW MILES, ONE LOCAL OWNER + DEMO.
- 07 REXTON RX 270 SE 5, LOCAL SILVER.



LAND ROVER COMMERCIALS

- 64 DEFENDER, 110 COUNTY, TD, D/C, ONE OWNER, NO AGRICULTURAL WORK, ONLY 40K.
- 63 DEFENDER, 90 HARD TOP TD, LOCALLY OWNED MINT CONDITION, 34,000 MILES.
- 13 DEFENDER, 90 HARD TOP, SILVER, LOCAL.
- 11 DEFENDER 90 H-TOP X TECH LE TD, ONE OWNER.

LAND ROVER

- 09 RANGE ROVER SPORT, HSE TDV8 AUTO, LOCALLY OWNED, LOW MILES, SERVICE HISTORY, PRIVATE PLATE.
- 57 FREELANDER 2, GS TD4 BLUE, LOCALLY OWNED, SERVICE HISTORY, MINT CONDITION.

COMMERCIALS

- 66 MITSUBISHI SHOGUN, SG2, AUTO, SWB, 1 LOCAL OWNER, 12K MILES.

4 DOOR PICK-UPS WITH VAT @ 20%

- NISSAN NAVARA, NP300'S, AVAILABLE IN VISIA, ACENTA, ACENTA+ AND TEKNA MODELS, SELECTION OF COLOURS, 3.5 TONNE TOWING, 5 YEAR WARRANTY.
- 16 NISSAN NP300, TEKNA, 3.5 TONNE TOWING CAPACITY, WARRANTY UNTIL 24/03/21. ONLY 12,000 MILES, ONE OWNER, FULLY LOADED WITH EXTRAS.
- 15 ISUZU DMAX, UTAH, ONE OWNER, BALANCE OF 5 YEAR WARRANTY, 28,000 MILES.
- 64 VOLKSWAGEN TRENDLINE TDI 4 MOTION DC, MANUAL, SERVICE HISTORY.
- 14 VOLKSWAGEN AMAROK CANYON, A32 SPECIAL EDITION 28,000 MILES, ONE OWNER, SERVICE HISTORY.
- 62 SSANGYONG KORANDO, SPORT EX, ONE OWNER + DEMO, SERVICE HISTORY.
- 61 NISSAN NAVARA, D40, AUTO, LOCAL. NO VAT.
- 57 MITSUBISHI L200, AUTO, LOCAL IN SILVER.

13 KIOTI MECHRON
2200 ONE LOCAL OWNER.

High Noon Garage Whitmill
Carmarthen Arms SA32 7EN
OPEN 6 DAYS A WEEK (CLOSED SUNDAYS)
5 MINUTES FROM CARMARTHEN

01267 290 900

www.GERAINTJONES4X4.co.uk

WE OFFER
• SALES • SERVICING • PARTS & ACCESSORIES

SALES TEAM ASK FOR:
Marie, Gavin or Beryl

STORES & SERVICE TEAM ASK FOR:
Gavin or Beryl



NEW KIOTI MECHRON,
4 DOOR & 6 SEATER 4X4
WITH TIPPER, DIESEL, IN STOCK.
2 YEAR WARRANTY ON ALL NEW.
NEW KIOTI MECHRON, 2 DOOR.

INDEPENDENT TOYOTA HILUX SPECIALIST

Models portrayed for illustration purposes only.
Details correct at time of going to press.
All commercials +Vat @20%.



LIVESTOCK MANAGEMENT SYSTEMS



Qualifying Equipment for the Welsh Farm Business Grant Round 7 Opening 2nd March

RAPPA Standard Yard

- Suitable for penning up to 250 sheep.
- 20 x 7ft | 2.1m Aluminium Hurdles provide 140ft of penning. Can be increased by using a boundary fence.
- Yard base forms part of the sheep race when in use and connects with RaceWeigh and RaceGrip
- Suitable for road towing with the trailer gross weight under 750kg.



RAPPA RaceWeigh

- Three-way drafting for fast sorting.
- Flared drafting gates promote exit flow
- Anti-jump bar prevents sheep injury and trapped hands when grading.
- EID stick holder so you can work hands-free.
- Auto-lock drafting gate latches.



RAPPA RaceGrip

- Travels inside Rappa yard, solution for dagging, vaccinating, tagging and drenching sheep.
- Auto sizing - scissor-action grip-panels automatically adjust.
- Smooth and light grip mechanism, locked automatically restraining sheep without sudden movement or force.



0843 506 5430

www.livestockmanagementsystems.co.uk



Certified RAPPA Distributor

RAPPA