



Y TIR

Ilais ffermwyr Cymru

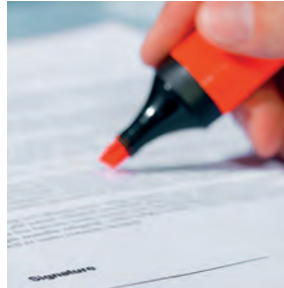
the voice of Welsh farming

£2.25



Come and join us for a farmhouse breakfast

details on page 2



Review before you renew - FUWIS advice

page 8



Transport and machinery safety

page 22

ENSURING OUR FAMILY FARMS ARE PLACED AT THE HEART OF ALL FUTURE POLICIES

by Glyn Roberts, FUW President

EVEN before December 12, 2019 had been one of the most unusual periods in British politics in recent decades, as arguments over Brexit further divided Parliament, political parties and the nation; Government ministers continued to resign in droves; three proposed Brexit dates came and went; MPs were expelled from or defected between parties; and the Westminster Government was defeated in court cases that went to the very heart of the UK's parliamentary democracy.

Against this often bewildering background, growing concerns about the impact of climate change led to the rapid rise of the Extinction Rebellion movement and commitments to slash UK greenhouse gas emissions, while for Welsh farmers it has increasingly felt that the media has deliberately adopted an anti-red meat agenda by failing to discriminate between the environmental footprint of different forms of food production around the globe.

Closer to home, with rock-bottom beef prices already shattering confidence, the Welsh Government's plans to introduce costly regulations in the form of an effective all-Wales Nitrate Vulnerable Zone (NVZ) merely added to fears, while the conciliatory tone of a consultation on future Welsh farm support suggested that at least some of the dangers of the proposals put forward in 2018 had been recognised - but not the core worry that Wales deserves a dynamic, carefully crafted scheme aimed at tackling modern challenges, rather than one based on the decades-old concept of payments for environmental public goods.

With the December 12 election results having delivered a



seventy-eight seat majority to the Conservatives, including many in traditional Labour-voting constituencies, 2020 will be a very different year to what it might otherwise have been.

Firstly, and most importantly, this majority has meant Parliament has now ratified the EU Withdrawal Agreement and Political Declaration, meaning the UK will almost certainly leave the European Union on the January 31 2020, triggering an eleven-month period of UK-EU negotiations during which a long term trade deal with the EU will hopefully be agreed and ratified.

As such, February 1 2020 marks the start of the 'real' Brexit negotiations, and for most people it is likely to feel like very little has changed.

Many have speculated that the extension of the Withdrawal Period to beyond December 2020 is likely, given the complexity of what must

be negotiated and the infrastructure, such as new border controls, that must be put in place before the end of the period.

While keeping the promise to 'get Brexit done' rapidly will be a political focus for Boris Johnson, the FUW maintains its long-held view that we must get Brexit done safely, over a realistic timescale that ensures a UK- EU trade deal which delivers full and unfettered access for our Welsh produce to EU markets.

With the UK Government now representing many former Labour constituencies where jobs in manufacturing and other areas are particularly reliant on access to EU markets, and a majority that significantly dilutes the power within the

Conservative party of those who support harder forms of Brexit, this raises some hopes that an UK-EU trade deal which is more favourable for Welsh farmers might be secured.

However, the obstacles to achieving this are significant, given the apparent clash between the stated objectives of the Conservative Party in relation to increased sovereignty and freedom to trade with non-EU countries, and the EU's desire to protect its internal markets and standards.

Continues on page 3



A targeted drench made specifically for Welsh farms but equally as effective in areas with similar deficiencies.

Targeting actual deficiencies with relevant ingredients
Smaller dosages from just 2ml - 5ml for sheep and just 5ml - 15ml for cattle.

Quicker, easier and cheaper to use.

Dosage Costs

Lambs under	Ewes under	Calves under	Cows under
8p	20p	20p	60p

Call Bryan Hammatt for more information or to order:

01792 209075
07788 140848

www.welshfarmsupplies.co.uk

Cyfarfod Cyffredinol Blyneddol FUW Ltd

Dydd Gwener 10fed Ionawr 2020
9.30yb

Lleoliad: Aberystwyth a thrwy Gynhadledd Fideo yn y Swyddfeydd Siroi

Sylwch: Mae'r agenda yn fyr, a darperir cyfleusterau fideo er mwyn lleihau teithio i aelodau.



FUW Ltd Annual General Meeting

Friday 10th January 2020
9.30am

Location: Aberystwyth and by Video Conference in County Offices

Please note: The agenda is a short one, and video facilities have been provided to minimise travel for members.

FUW looks forward to Farmhouse breakfast week

BREAKFAST is one of the most important meals of the day and it is a great opportunity to talk and share your thoughts before starting the day.

In order to promote the health benefits and have a good catch up before the day starts, FUW teams across the country are once again hosting a variety of farmhouse breakfasts (Saturday 18 - Sunday January 26 2020) and the FUW is also once again taking the farmhouse breakfast to Cardiff on Tuesday January 21.

FUW President Glyn Roberts said: "We all get really excited about our farmhouse breakfasts every year. We can start the day together with family, friends and neighbours, in a positive way and at the same time raise money for our charitable cause, The DPJ Foundation.

"All of us are looking forward to yet another good turnout. It's fair to say that a healthy start is not just good for a healthy heart but also for a healthy mind."

The FUW's Farmhouse breakfast week also provides an opportunity to promote the quality premium local produce that farmers grow for us every day of the year, and throughout breakfast week the FUW will shine a spotlight on the importance of our rural economy.

"I hope many of you will be able to join us for breakfast. We want you to be a part of what we do, and share your thoughts and worries about the state of the industry, tell us your stories and help us to understand how we can help each other, and what better way to do that than around a table where we share great food and have a cup of tea," added Glyn Roberts.

Breakfast dates and locations are seen in the table below and on the map to the right, further information can be obtained from your local FUW office.

Pictures of last year's breakfasts can be seen on page 11



2020 Farmhouse Breakfasts

1. Anglesey Showground
2. Pwllheli
3. Bryncir
4. Clynnogfawr
5. Bangor
6. Rowen
7. Betws y Coed
8. Llanelwy
9. Rhosesmor
10. Carrog
11. Llanfrothen
12. Llanymawddwy
13. Canolfan Pennal, Machynlleth
14. Cafe Maengwyn, Machynlleth
15. Foel
16. Forden
17. Penrhyncoch
18. Caerwedros
19. Felinfach
20. Hermon
21. Crundale
22. Llanarthne
23. Llanelli
24. Treorchy
25. Cowbridge
26. Hafodyrynys
27. Llantilio Crossenny
28. Uwchmynydd



COUNTY	LOCATION	DATE	MAP NUMBER
ANGLESEY	Anglesey Showground	Saturday January 18	1
CAERNARFON	Llechnant, Tain Lon, Clynnogfawr, Gwynedd, LL54 5DE	Saturday January 18	4
	Cefn Cae, Rowen, Conwy, LL32 8YT	Monday January 20	6
	Bryn Hynog, Llannor, Pwllheli, Gwynedd, LL53 5UG	Tuesday January 21	2
	Caffi Tŷ Newydd, Uwchmynydd, LL53 8BY	Wednesday January 22	28
	Moel y Ci, d/O Ffridd, Tregarth, Bangor, Gwynedd, LL57 4BB	Thursday January 23	5
	Dylasau Uchaf, Padog, Betws y Coed, Conwy, LL24 0NF	Friday January 24	7
	Caffi Bryncir, Mart Bryncir, Bryncir, Garndolbenmaen, Gwynedd, LL51 9LX	Friday January 24	3
	CARMARTHEN	Pontyates Welfare Hall, Llanelli, SA15 5TR	Thursday January 23
CEREDIGION	Llanarthne Village Hall, SA32 8JD	Friday January 24	22
	Felinfach Hall, SA48 8AH	Tuesday January 21	19
	Caerwedros Hall, SA44 6BS	Wednesday January 22	18
DENBIGH/FLINT	Penrhyncoch Hall, SY23 3EL	Friday January 24	17
	Rhosesmor Village Hall, Rhosesmor, CH7 6PQ	Saturday January 25	9
	Cefn Meiriadog Chapel festri, Llanelwy	Friday January 24	8
GLAMORGAN	Cwm Farm Shop, Treorchy, CF42 6DL	Tuesday January 21	24
	Cowbridge Lesser Hall, CF71 7DD	Friday January 24	25
GWENT	Nantyderrri Farm, Llantilio Crossenny	Tuesday January 21	26
	Ty Oakley, Hafodyrynys	Friday January 24	27
	Venue TBC, Caerphilly County Borough joint with Glamorgan	Monday January 20	-
	Collecting at Monmouthshire Market	Wednesday January 22	-
MEIRIONNYDD	Llanfrothen village cafe/shop	Wednesday January 22	11
	Tymawr, Carrog	Thursday January 23	10
	Brynuchaf, Llanymawddwy	Friday January 24	12
	Y Ganolfan Pennal, Machynlleth	Saturday January 25	13
MONTGOMERY	Cafe Maengwyn, Machynlleth	Monday January 20	14
	Dyffryn Cafe, Foel	Wednesday January 22	15
	Mark & Helen Williams, Penderw, Forden	Friday January 24	16
PEMBROKESHIRE	Canolfan Hermon, SA36 0DT	Tuesday January 21	20
	Crundale Hall, SA62 4DF	Friday January 24	21

If we have published anything that is factually inaccurate, please contact the editor on 01970 820820 at ytir@fuw.org.uk or at FUW, Llys Amaeth, Plas Gogerddan, Aberystwyth, Ceredigion, SY23 3BT and once verified we will correct it here as soon as possible.

South Wales Evening Post is part of Trinity Mirror North West & North Wales Ltd, a subsidiary company of Reach PLC, which is a member of IPSO, the Independent Press Standards Organisation. We adhere to the Editors' Code Of Practice as enforced by IPSO, who are contactable for advice at Independent Press Standards Organisation, Gate House, 1 Farringdon Street, London, EC4M 7LG. Website: <http://www.ipso.co.uk> Telephone: 0300 123 2220; email advice@ipso.co.uk

If you have a complaint concerning a potential breach of the Code of Practice, we will deal with your complaint directly or IPSO can refer your complaint to us. Please go to <https://www.reachplc.com/how-to-complain> where you can view our Complaints Policy and Procedure. A "How To Complain" pack is also available by writing to the Legal and Compliance Department, Reach PLC, One Canada Square, Canary Wharf, London, E14 5AP.

Sut i gysylltu gyda Y Tir / How to contact Y Tir

Golygydd/Editor: Nia Davies-Jones - ytir@fuw.org.uk

Golygydd y Gymraeg/Welsh Editor: Angharad Evans - angharad.evans@fuw.org.uk

Swyddog y Wasg UAC/FUW Press Officer: Anne Dunn - anne.dunn@fuw.org.uk

www.fuw.org.uk



President's New Year message



Continued from page 1

Of course, with February 1 2020 also marking the date on which formal trade negotiations can start with countries such as the USA - a country with an economy which is seven times more powerful than that of the UK - the risk that we might sign up to disadvantageous deals which introduce unfair competition from farmers in countries where health, hygiene, welfare and environmental standards fall well short of those required of us, remains a real spectre.

Far from being unfounded, there is plenty of evidence that such disadvantageous trade deals could not only be struck, but that UK farmers could simultaneously be hit with further restrictions and regulations: Successive agriculture ministers have spoken about raising UK standards and restricting animal movements after Brexit, while leaked notes from informal UK-US trade discussions held earlier this year refer to lowering food standards and reducing food labelling to allow imports of US food, as well as the exclusion of conditions relating to climate change from any future trade agreement.

With environmental issues, and in particular greenhouse gas emissions, a clear priority for all UK political parties, and a US administration which denies the very existence of man-made climate change and allows production standards UK farmers would regard as unethical, the political desire to show a trade deal can be reached with the US must not be allowed to compromise our farming and food industry.

Critical to trade negotiations over the coming year will be the tariffs and Tariff Rate Quotas (TRQs) which apply on imported goods - taxes and limits which can be adjusted in order to secure better deals with other countries. But with the Import Tariff (Reduction) Bill 2017-19 setting draft tariff and TRQ rates at bargain basement levels for agricultural imports, and suggestions by the Prime Minister that checks on imports from Northern Ireland may not even be applied, it is imperative that the new UK Government review these rates and align them with those of the EU. And if there is any suggestion that UK producers and standards are to be compromised through a trade deal, whether with the US or elsewhere, our industry must be prepared to stand up and make its objections known.

Whichever political party they represent, MPs from rural constituencies in particular must recognise the dangers for their constituents of trade deals which disadvantage farming, while we must hope that, in the interest of a well-functioning democracy, those parties which have been so damaged by the election quickly regroup to take up the essential role of becoming effective in opposition, and scrutinising Government.

While the Brexit issue clearly inflicted damage on Labour and the Liberal Democrats at the 2019 election, this was far from being the only factor, and many Labour politicians have been open in expressing their fear that the party has lost touch with traditional working communities through its adoption of a far-left cosmopolitan agenda.

As the central Labour Party take stock, and deliberate as to whether or not this is the case, it is also important for Welsh Labour and Assembly Members from all parties to do the same: After twenty years of devolution, Cardiff Bay seems more remote than ever for the working families in our farming and rural communities, while radical policies such as plans to open up rural access for canoeists and mountain-bikers seem aimed far more at pleasing the cosmopolitan urban elite than meeting the needs of hard-working families.

Such frank statements make uncomfortable reading, but I make no apology for telling it as it is; and with 2020 likely to be critical to the future of our industry we will continue over the coming year to ensure our family farms are placed at the heart of all future policies.

This would not be possible without the commitment of FUW staff and officials across Wales, and I would like to take this opportunity to thank them for their hard work in 2019, and wish all Members, staff and colleagues all the very best for 2020.

What's lurking in the pile of post on your kitchen table?

by Caryl Roberts, FUW Membership & Operations Manager



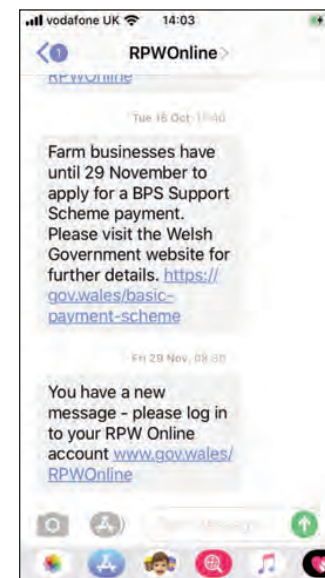
IT used to be the case that any post landing on the front porch was inevitably a bill of some sort. But that's not the case anymore. Everything nowadays is set up as an automatic direct debit with a login to access the information as and when you need it. It's great - if it works and you remember your password!

The Welsh Government's Rural Payments Wales (RPW) online communication processes has also changed, whereby the majority of messages will be notified to you electronically only. Hard copy letters and forms may still be issued occasionally but only in extraordinary circumstances or when hard copy signatures are required, e.g. BACS form.

That may mean less recycling to clear from your pile of post on the kitchen table, but it presents another problem. How do you make sure that you're not missing important deadlines or messages requiring action from RPW? This can be quite stressful and time consuming. Most of us will have forgotten the login details, or a computer that's refusing to turn on or non-existent broadband. All of these issues can happen at anytime and cause unnecessary stress and worry for you.

The FUW Agency service takes care of all of this. Allowing us to act as your agent will mean complete peace of mind, knowing that we will check your RPW messages and get in touch with you advising you of any actions required. We do all the leg work so that you don't have to worry.

The service costs £195+VAT a year, just £16.25 a month or 54p a day. For more information and to join up today contact your local office where they can sign you up and set up the agency link between your RPW online account and ourselves.



Kubota M9540 C/W Loader,
3200 hours approx. 2016

Valtra N91 with Loader. 7857
Hours Approx. Good condition,
clean interior. 2007

Kubota M7151 Premium
Front Linkage PTO. 1600
Hours Approx
In mint condition. 2017

Valtra T174 Active. 2328
hours approx. 4 Spools,
Passenger seat. 2018

Deutz Agrofarm 430, 3991
hours approx. 3 Spools.
2009

Valtra T234 Active, 915
hours approx. 4 Spools,
Front PTO and linkage.
2018

Wacker Neuson EZ28,
1465 hours approx.
complete with 3 buckets
and quick hitch. 2018

BREDAL's SG series is
a multipurpose spreader
for lime, fertilizer, sand
and salt.
2018 model as new.

Hitachi EX75UR-5,
5245 hours approx.
Offset boom, 3 buckets
and quick hitch.

Snap Tight Drag
Hose 4&5 inch
In Stock

Farma FH100 Flail
Head

Phone: 01559 384886 Fax: 01559 384814 Email: sales@jdsmechanery.co.uk

MEGASTART EWE & LAMB



- ✓ A free access feed tub used in the 4-6 weeks prior to lambing.
- ✓ Provides ewes with an excellent source of energy from sugars, starch and protected fat.
- ✓ Includes high quality MOS designed to improve colostrum quality.
- ✓ Vitamins, minerals and trace elements incorporated at optimum levels to achieve enhanced animal performance.
- ✓ High in Vitamin E and Selenium to promote a healthy immune system.
- ✓ Available in 80Kg and 20Kg tubs



The best **START** in life you can give



**SCOTMIN
NUTRITION**

www.scotmin.com
info@scotmin.com



01292 280909

Or contact your local supplier



Parhau o dudalen 6

Ymhell o fod yn ddi-sail, mae digon o dystiolaeth y gallai cytundebau masnach anfanteisiol o'r fath nid yn unig gael eu taro, ond y gallai ffermwyr y DU gael eu taro ar yr pryd â chyfyngiadau a rheoliadau pellach: Mae gweinidogion amaeth wedi siarad am godi safonau'r DU a chyfyngu ar symudiadau anifeiliaid ar ôl Brexit, tra bod nodiadau a ddatgelwyd o drafodaethau masnach anffurfiol rhwng y DU a'r UDA a gynhaliwyd yn gynharach eleni yn cyfeirio at ostwng safonau bwyd a lleihau labelu bwyd i ganiatáu mewnfario bwyd o'r Unol Daleithiau, yn ogystal ag eithrio amodau sy'n ymwneud â newid yn yr hinsawdd o unrhyw gytundeb masnach yn y dyfodol.

Gyda materion amgylcheddol, ac yn benodol allyriadau nwyon tŷ gwyr, yn flaenoriaeth glir i holl bleidiau gwleidyddol y DU, a gweinyddiaeth yr UDA sy'n gwadu bodolaeth newid hinsawdd o waith dyn ac sy'n caniatáu safonau cynhyrchu y byddai ffermwyr y DU yn eu hystyried yn anfoesol, ni ddylai'r awydd gwleidyddol o ddangos y gellid dod i gytundeb a'r Unol Daleithiau gyfaddawdu ein diwydiant ffermio a bwyd.

Yn hanfodol i drafodaethau masnach dros y flwyddyn nesaf bydd y tariffau a'r Cwotâu Cyfradd Tariff (TRQs) sy'n berthnasol ar nwyddau a fewnforir - gellir addasu trethi a therfynau er mwyn sicrhau cytundebau gwell gyda gwledydd eraill. Ond gyda'r Bil Tariff Mewnfario (Lleihau) 2017-19 yn gosod cyfraddau tariff drafft a chyfraddau TRQ ar lefelau isel ar gyfer mewnfario amaethyddol, ac awgrymiadau gan y Prif Weinidog efallai na fydd gwiriadau ar fewnfario o Ogledd Iwerddon hyd yn oed, mae'n hanfodol bod Llywodraeth newydd y DU yn adolygu ac alinio'r cyfraddau hyn â chyfraddau'r UE.

Ac os oes unrhyw awgrym bod cynhyrchwyr a safonau'r DU dan fygythiad oherwydd cytundeb fasnach, boed hynny gyda'r Unol Daleithiau neu rywle arall, rhaid i'n diwydiant fod yn barod i sicrhau bod pawb yn clywed ein gwrthwynebiadau.

Pa bynnag blaid gwleidyddol y maent yn ei chynrychioli, rhaid i ASau o etholaethau gwledig yn



benodol gydnabod peryglon cytundebau masnach i'w hetholwyr, sy'n anfanteisiol i amaethyddiaeth, er bod yn rhaid i ni obeithio, er budd democratiaeth sy'n gweithredu'n dda, bod y pleidiau hynny sydd wedi'u difrodi gymaint gan yr etholiad yn ailymgynnull yn gyflym i ymgymryd â'r rôl hanfodol o ddod yn wrth wrthblaid, ac yn dadansoddi'r Llywodraeth yn ofalus.

Er bod Brexit yn amlwg wedi achosi difrod i Lafur a'r Democratiaid Rhyddfrydol yn etholiad 2019, nid hyn oedd yr unig ffactor, ac mae llawer o wleidyddion Llafur wedi bod yn agored wrth fynegi eu hofn bod y blaid wedi colli cysylltiad â chymunedau gweithiol traddodiadol trwy fabwysiadu agenda gosmopolitaidd.

Wrth i'r Blaid Lafur canolog bwysu a mesur y sefyllfa, ac ystyried p'un a yw hyn yn wir ai peidio, mae hefyd yn bwysig i Aelodau Llafur ac Aelodau Cynulliad Cymru o bob plaid wneud yr un peth: ar ôl ugain mlynedd o ddatganoli, mae Bae Caerdydd yn ymddangos yn fwy pell na erioed i deuluoedd sy'n gweithio yn ein cymunedau ffermio a gwledig, tra bod polisïau radical fel cynlluniau i roi mynediad gwledig i

ganŵ-wyr a beicwyr mynydd fel pe baent wedi'u hanelu'n llawer mwy at blesio'r elit trefol cosmopolitaidd na diwallu anghenion teuluoedd sy'n gweithio'n galed.

Mae'n anodd iawn darllen datganiadau di-flewyn-ar-dafod o'r fath, ond nid wyf yn ymddiheuro am ei dweud hi yn blwmp ac yn blaen; gyda 2020 yn debygol o fod yn hanfodol i ddyfodol ein diwydiant, dros y flwyddyn nesaf, mi fyddwn yn parhau i sicrhau bod ein ffermydd teuluoel yn cael eu rhoi wrth galon holl bolisiau'r dyfodol.

Ni fyddai hyn yn bosibl heb ymrwymiad staff a swyddogion UAC ledled Cymru, a hoffwn fanteisio ar y cyfle hwn i ddiolch iddynt am eu gwaith caled yn 2019, a dymuno'r gorau i bob Aelod, staff a chydweithiwr ar gyfer 2020.

This article is in English on the front page:

"Ensuring our family farms are placed at the heart of all future policies."

Electricity Network Connection Appointments

WESTERN POWER DISTRIBUTION

Serving the Midlands, South West and Wales

FOR WPD CUSTOMERS AND INDEPENDENT CONNECTION PROVIDERS.

Western Power Distribution (WPD) is the electricity distribution network operator (DNO) for South Wales, South West England and the Midlands.

We operate the regional electricity network and provide new connections to homes, businesses and generation sites at voltages from 230 volts to 132,000 volts.

Ahead of applying to us for a new connection and particularly for Generation Connections, our customers and Independent Connection Providers (ICPs) often have questions and want to understand more about the process, timescales, technical matters, consents/legal requirements and possible constraints of making a connection to the network in a particular area.

If you are a landowner, an ICP, developer or community group and you need to discuss your requirements and the connection process, before making an actual application for a new connection to the network, please contact WPD on the relevant number below.

Midlands:
0800 121 4909

South West & Wales:
0800 028 6229

wpdconnectappoint@westernpower.co.uk

Please mention that your enquiry is for **connection appointments** when you call.

For details of our operational area please visit our website www.westernpower.co.uk



Review before you renew



by Dave Bates, FUW Insurance Services Ltd Business Development Manager

THE aim of insurance - be it car, home, farm, business or travel insurance - is to mitigate risk and protect you and your assets from any unforeseen circumstances. There are thousands of providers on the market; the question is: are you receiving the cover you need?

If your policy is up for renewal soon, it pays (quite literally) to set some time aside to review your current insurance. Even if you don't realise it, your circumstances are changing all the time and just one small change could have a huge impact on cost.

Not only can reviewing your insurance save you money, but it will also help you to determine whether you are receiving the right level of cover for your needs. If you automatically renew your policy without second thought, you might not be adequately covered and therefore will be exposed to a number of potential risks.

Carrying out a review of your insurance doesn't just involve logging online to compare quotes - there are a number of other factors you need to bear in mind, such as:

- How often do you review your insurance? Ideally, a review should be carried out a couple of months before each renewal as this will give you time to assess your needs and ensure you are getting the best deal.
- Are you confident that your insurance is competitively priced? Though all policies are unique to the policy holder, there's no harm in researching average insurance costs (for your size home or business type, for example) and asking other people for advice.
- How much have your circumstances changed since your last renewal? As mentioned, one change could make a huge difference to the cost of your premium.

For business insurance, it's worth considering the following:

- Does your current policy include cover for long-term employee absenteeism as a result of stress? Stress is one of the main reasons for employees taking sick days; if you're concerned about

the effects it could have on your business, then you might want to take out a policy which covers employee rehabilitation.

- The number of companies experiencing data breaches continues to grow. It's therefore vital your policy provides adequate cover for electronic business interruption.

- Have you properly assessed your level of risk and exposure to the public? Doing this will allow you to determine what level of public liability you need.

- How about your business' financial liability? There are many risks you could be susceptible to that won't be covered on a standard policy, such as flooding. Even if you're confident that your business is not directly at risk, what about your suppliers?

If you're reviewing your home insurance policy, bear these factors in mind:

- Similar to business insurance, flooding is not typically included on a standard home insurance policy. But, with floods affecting many parts of the UK this winter and with more wet weather to come, it's something you should consider protecting yourself against.

- Have you made changes to your home? If you've extended, for example, the extension may not be covered on your current policy.

- Have you recently bought expensive items? If so, they'll need to be accounted for on your contents insurance if you want to protect them.

Lastly, if your car insurance is due for renewal, answer the following:

- Have you changed your job since the last renewal? Occupation affects premiums and your insurer should be notified, regardless of whether or not you drive to work.

- Are all drivers listed on your policy, or are there any drivers that you need to remove?

- Have you recently customised your vehicle?

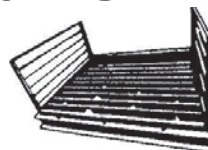
Setting time aside to review your insurance policy a couple of months before its up will help to ensure you're getting the right cover for the right price. Contact your local FUWIS office today for a review.

“Setting time aside to review your insurance policy a couple of months before its up will help to ensure you're getting the right cover for the right price. Contact your local FUWIS office today for a review.”

HOPKINS QUICK FIT CATTLE GRID & BASE

LOAD TESTED TO 50 TONS

- Installed within hrs/not days
- Minimal labour
- Maintenance free
- No concrete/blocks required - set in the ground on a hard core base



Pat No.
2155526

PLEASE SEND FOR BROCHURE

HOPKINS STEEL FABRICATIONS

Unit 2A, Lion Works, Pool Road, Newtown, Powys SY16 3AG

Tel: (01686) 627374 Fax: (01686) 627515

www.hopkinscattlegrids.co.uk



GWASANAETHAU YSWIRIANT

FUW
INSURANCE SERVICES

CORNEL CLECS

Clonc fach gyda Mared yn y mart

gan Angharad Evans, Golygydd y Gymraeg

BLWYDDYN Newydd dda i chi gyd, gobeithio bydd hon yn flwyddyn garedig a lwyddiannus i bob un ohonom ac edrychwn ymlaen yn llawn gobaith ar ddechrau blwyddyn arall.

Mae'n anodd credu bod hi'n 2020! Mae amser wir yn hedfan. Mae Ladi Fach Tŷ Ni yn tyfu a ddim yn fach bellach! Ond mae'r angerdd am ffermio'n parhau! Elfen arall sy'n mynd a'i bryd hi yw mynd i'r mart, pan fydd gwyliau ysgol yn caniatáu. Wrth gofio nôl, roeddwn i hefyd yn hoff iawn o fynd gyda'n nhad i fart Tregaron bob pythefnos yn ystod y gwyliau haf. Ond beth yw pwysigrwydd ein marchnadoedd erbyn heddiw?

Un sy'n gwybod yn well na neb yw'n Gweithredwr Yswiriant Mared Hopkins sy'n gofalu am gwsmeriaid gogledd Ceredigion, o Dalybont lawr i Dregaron a draw i Lanrhystud. Elfen hollbwysig o waith bob dydd Mared yw mynychu marchnadoedd da byw yr ardal, mart gwartheg yn Nhregaron bob am yn ail ddydd Mawrth a mart defaid bob dydd Gwener. Mae mart Aberystwyth yn fisol, a mart Pontarfynach yn cael ei gynnal o fis Gorffennaf tan fis Rhagfyr yn wythnosol, wedyn yn fisol o fis Ionawr i fis Mai. Dyma Mared i esbonio mwy am ei gwaith yn y mart:

Pa mor bwysig yw marchnadoedd bach yr ardal i dy waith?

Yn fy ardal i yng Ngogledd Ceredigion, mae yna farchnad anifeiliaid byw yn Aberystwyth, Pontarfynach a Thregaron. Rwy'n ceisio mynychu bob un o fewn rheswm. Rwy'n ferch fferm felly mae'r diddordeb yno ac mae'n gyfle i fi gael sgwrs gyda chleientiaid presennol a lledu croeso i gwsmeriaid newydd. Mae fy nghefnid yn galluogi mi i ddeall y gofidiau sydd yn gysylltiedig â ffermio, a hefyd yn ymwybodol o'r ansicrwydd sydd o'n blaenau.

Yn aml pan fyddai'n galw i weld pobol yn ei cartrefi i drafod ei yswiriant ac ati - fydd y pwnc o brisiau'r mart yn dod i fyny bron bob amser, felly mae'n handi i gael gwybod y 'trade' fel petai. Mae 'word of mouth' yn allweddol i sut rwyf wedi datblygu yn fy ngwaith ac mae mynychu'r marchnadoedd yma wedi chwarae rhan fawr. Mae dangos fy wyneb mewn lle cydfuddiannol yn ddigon ambell waith, ac os fydd cyfle i roi cyngor neu i roi cynnig ar ei yswiriant, gwnaf bob ymdrech i wneud gyda graen a gofal.



Mart Pontarfynach.

Wyt ti'n gweld dyfodol i farchnadoedd?

Mae'r marchnadoedd yma yn llawn cymeriadau clên gwledig o bob oedran, gyda chenedloedd o'n blaen ni wedi bod yn ei mynychu a ffermio yn yr ardal ers canrifoedd. Oherwydd hyn rwy'n teimlo bod cefnogaeth y marchnadoedd yma yn gryf a bod y trigolion yn ymwybodol o'r pwysigrwydd i'w cadw, cynnal a'i cefnogi. Mae'r byd yn newid ac mae'r sylw negyddol mae'r byd amaethyddol yn ei gael yn ddiweddar yn annog pobol taw cynnyrch lleol, cynaliadwy sy'n mynd i chware rhan fawr yn nyfodol ffermio dros y byd i gyd. Pryder mwyaf y marchnadoedd bach yma yw'r pris maent yn cael am ei cynnyrch - rydym yn clywed am brisiau yn cwmpo a chodi o hyd - does dim sicrwydd gyda'r ffermwyr o gwbl o wythnos i wythnos.

Rwy'n sylwi yn aml fod llawer o'r bobol sydd yn dod i'r marchnadoedd yma yn ei defnyddio fel lleoliad i gwrdd â'i cymdogion, i drafod ei gwaith, newyddion yr ardal a hyd

yn oed ei gofidion - mae'n rhan o'i hwythnos. Yn aml glywch chi am ba mor unig yw gweithio yn amaethyddiaeth, mae'n bwysig bod gan y gymuned rhywle fel hyn i fynychu, a gwneud amser i fynd, mae ein bywydau ar frys rhan fwyaf o'r amser a dim digon o oriau yn y dydd.

Fi'n gobeithio yn arw fydd yna ddyfodol i'r marchnadoedd yma - maent yn rhan enfawr o'n diwydiant ni er mwyn gwerthu ein cynnyrch lleol ar stepen y drws, ac yn fwy na dim yn draddodiad arall nad ydym am ei golli yng nghefn gwlad. Mae'r byd yn newid yn gyflym iawn ac fel ni'n gwybod - unwaith chi'n colli rhywbeth mae'n anodd iawn i'w gael nôl.

Mae Mared yn cyfeirio at fart Pontarfynach, dyma esiampol berffaith o fart, er yn gymharol fach o ran maint, sy'n galon y gymuned amaethyddol a hynny ers dros gan mlynedd. Mae pwysigrwydd y martiau yn amhrisiadwy i ffermwyr, a'r ardal leol, esiampol wych o #AmaethAmByth!

This article is available in English on the FUW website - News - Y Tir News - "Catching up with Mared at the mart."

If you're 'not quite yourself' - talk to someone about it



by Emma Picton-Jones, Founder, The DPJ Foundation

WE are absolutely delighted to be FUW's chosen charity and have already had the pleasure of attending events put on local to us here in Pembrokeshire. 2019 was a fantastic year for us. Our Share the Load counselling referral service launched across Wales and we have grown our volunteer base to well over 40 volunteers based in every corner in Wales. We took part in numerous shows over the summer and were fortunate enough to receive the FUW external award for services to agriculture at the Royal Welsh Show.

Share the load has supported over 160 farmers across Wales with poor mental health by providing fast and effective counselling. We have a range of counsellors across Wales including both English and Welsh speaking counsellors.

Counselling works by enabling the person to talk through their problems and work out practical solutions to getting better. We were lucky enough to receive £40,000 from Welsh Government to support us with providing this service in North Wales.

Mental health continues to be a hot topic and quite rightly so. One of our initiatives is to provide Mental Health Awareness sessions to people who work in the agricultural sector to provide them with the skills and confidence to have a conversation with someone they may be concerned for and how to encourage them to receive further help.

Welsh Government have provided us with funding to train 100 people across Wales and we will be releasing the dates shortly. In the meantime Pembrokeshire Lamb are sponsoring a training event in Pembrokeshire on January 28 in Withybush so if that's something you are interested in please contact Emma to book a place - emma@thedpjfoundation.co.uk

It is important to take care of your own mental health as well as look out for others. Check on those who may be isolated or under a lot of stress currently. If you are feeling down or just 'not quite yourself' - talk to someone about it, don't wait for it to pass and hope it will get better, take action and talk about it to a loved one or contact one of the fantastic charities we have in Wales to ask for help.

We look forward to bringing you updates regularly! From all at The DPJ Foundation, Happy New Year!



MMP
MORRIS MARSHALL & POOLE
CHARTERED SURVEYORS, AUCTIONEERS,
ESTATE AGENTS & VALUERS
COVERING SHROPSHIRE, MID & WESTWALES:

AMC
AGENT

one of FUW Agents for the AMC
Please contact us for a discussion about what
AMC can do for you
Tony Evans - Newtown - 07764 663190
Rob Hudson - Welshpool - 07764 663185
Other offices at Aberystwyth, Llanidloes,
Oswestry, Machynlleth, Tywyn, Rhayader

How can digital solutions in agriculture work together?

DIGITAL evolution in agriculture is unquestionably accelerating, with countless innovations now coming to market across all sectors of agriculture. As with all new technology, there is a challenge to make it simple for the user, and a major barrier for all of those technology solutions is that they often don't work together. Users are forced to supply the same essential field or animal data over and over in order to derive any valuable return.

The result of this is frustration and disengagement where innovation should, in theory, be rewarding to the user. How can these disparate systems work together, in a way that drives productivity on the farm?

Most progressive farmers in developed countries use a farm management software solution to manage their farm enterprise, covering everything from field or stock planning, budgeting, production and analysis, and forms the cornerstone to drive the tactical and strategic direction of their businesses. As a consequence, their software contains a rich source of data, of which different elements can be utilised by the new, varied digital advice-based innovations in today's agri-marketplace.

"As innovations increase, data standards struggle to keep up," says Alistair Knott, Precision Development Director at Proagrica, worldwide provider of data connectivity solutions for the agriculture industry.

"Farm management software are all different from one another, and very many didn't have data extraction and integration in mind when they were created. Expertise is needed to bring all of the data into a common, usable structure - without compromising the data's original source. This is particularly important as geospatial data becomes more the norm which, though incredibly valuable, requires exceptional processing capabilities and technological aptitude to utilise."

For farmers or advisors looking to use farm management software to drive productivity and profitability in their enterprise, there is a way to avoid this by choosing a system that can:

- a. Give complete control over permissions, deciding who exactly can use and see selected inputted data
- b. Seamlessly share permitted data with innovative software that can support the farmer's business strategy.

Essentially, digital farm management should make farming more productive, but not more onerous. By adopting a digital solution that meets the above criteria, farmers and advisors can focus on growing their business, comfortable that they are in complete control of their data, without requiring multiple entry of the same data sets.

For developers of new innovative tools for precision ag, it's essential that the design



architecture is easily accessible and mergeable into single data warehouse. Data entry must be controlled, avoiding free text where possible.

Trust is sacred in farming; the permissioning process must be at the heart of any solution, and not an afterthought. Where possible, ensure synchronicity with a central data exchange and/or the growers' farm system as the source of truth on the farm.

The implications of managing large, complex geo-spatial data sets are daunting, but rewarding. For innovative tech businesses, consider working with experts in the agricultural field, who know the sector, know the technical challenges and understand the opportunities.

For farmers, seek out a digital solution that works seamlessly with your farm practice, supporting your business as needed while avoiding unnecessary stress.



rdp

Law

Offering bespoke legal solutions to farming families, businesses and individuals across Wales.

matthew.wells@rdplaw.co.uk | 01633 413 500

RDP Law is a leading multi-disciplinary law firm

rdplaw.co.uk

Looking back at Farmhouse Breakfast Week 2019



Beth sy'n 'stelcian yng nghanol y pentwr o bost ar fwrdd y gegin?

gan Caryl Roberts, Rheolwr Aelodaeth a Gweithrediadau FUW

ERS dalwm bil oedd y cyfryw o lythrau oedd yn glanio ar mat y portsh. Ond nid fel yna mae hi bellach. Mae popeth nawr yn ddebyd uniongyrchol awtomatig gyda chyfarwyddiadau mewngofnodi er mwyn gweld y wybodaeth ar y wê fel ag y mynoch. Sydd yn grêt - os yw'n gweithio ac yn cofio'r blincin cyfrinair!

Mae prosesau cyfathrebu Llywodraeth Cymru 'Taliadau Gwledig Ar-lein' neu RPW fel yr elwir yn fyr wedi newid. Mae'r cyfryw o negeseuon yn cael eu hanfon i chi yn electronig yn unig. Caiff copi caled o lythrau neu ffurflenni eu hanfon weithiau ond dim ond mewn achosion eithriadol neu lle bydd angen llofnod copi caled ar gyfer BACS er enghraifft.

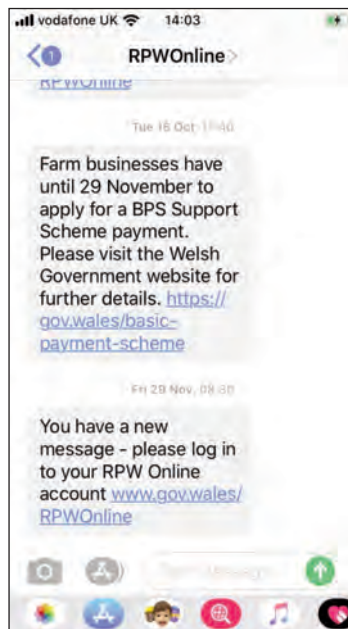
Er bod hyn yn golygu llai o waith ailgylchu papur, mae'n codi problem wahanol. Sut mae gwneud yn siŵr nad ydych chi'n methu dyddiadau cau pwysig neu negeseuon sydd angen eich sylw ar frys o'r system RPW? Mae cadw ar ben y gwaith yma yn gallu bod yn boendod ac yn mynd

a'ch amser prin. Bydd y rhan fwyaf ohonom wedi anghofio'r manylion mewngofnodi, cyfrifiadu'r sydd wedi mynd yn gapwt neu rhai efallai heb fand llydan i'w sôn amdano. Mae'r problemau yma yn gallu codi unrhyw bryd ac yn achosi straen a gofid.

Mae gwasanaeth Asiant FUW yn cymryd gofal o'r gwaith yma i gyd. Wrth adael i ni fod yn asiant i chi ar y system gallwch ymlacio gan wybod y byddwn ni yn tsecio eich negeseuon ac yn cysylltu gyda chi ar unwaith i'ch cyngori o unrhyw benderfyniad neu weithred sydd ei angen. Byddwn ni'n cario'r baich o gadw llygaid ar eich cyfrif er mwyn rhoi heddwch meddwl i chi.

Pris y gwasanaeth yw £195+TAW y flwyddyn - dim ond £16.25 y mis neu 54c y diwrnod. Am fwy o wybodaeth ac i brynu'r gwasanaeth er mwyn trefnu i gysylltu ni fel asiant i'ch cyfrif Taliadau Gwledig ar-lein cysylltwch â'ch swyddfa leol.

This article is in English on page 3: "What's lurking in the pile of post on your kitchen table?"



Premium Quality Red Lump Rock Salt
Ball of Madley Ltd
 EST 1970
ball
 THE ROCK SALT MEN
 • Imported and graded by us • No waste
 • Large lump size • Delivered nationwide
If it's not our name on the bag, it's NOT our salt!
 Telephone: 01981 250301
 www.ballofmadley-herford.co.uk
'Hand selected from the Himalayas'

Farmplus
 MANUFACTURER OF TIMBER BUILDINGS
 Timber buildings
 Natural products from renewable resources.
 Caring for the environment.

3 BAY MONOPITCH
 as shown
 45ft x 17ft x 10ft 6in, eaves
£5,250 + VAT
 delivered
 Many other options available

FARMPLUS SHAY LANE, LONGRIDGE, PRESTON PR3 3BT
 Tel: 01772 785252 www.farmplus.co.uk



Young farmers hear of robo

NESTLED just outside of the small Pembrokeshire village of Puncheston, near Haverfordwest, is Fagwrfran East farm, home to the Williams family, and 150 dairy cows.

Here Michael Williams farms with his parents Gareth and Annette, producing milk for cheese on a First Milk contract. When the family bought the farm in 1981, it was derelict and hadn't been farmed for a few years. It had been mainly a beef and sheep farm but as Gareth and Annette had both come from dairy farms, and dairy was their passion, it was converted to a dairy farm.

Gareth and Annette started milking with a few cows in a second hand eight abreast parlour. They progressively built the dairy herd up and whilst Michael studied for his A levels they installed a 10/20 swing over herringbone style parlour.

Michael returned home to the farm in 2006 after completing a Master degree in Exploration Geology at Cardiff University and after a few years became a partner with his parents in the business.

The farm continued to grow with investment in buildings, silage pits, slurry storage and lately the Robotic Dairy. Since January 2017 the herd has been milked by DeLaval VMS robots with a third robot installed in the summer of 2018.

Taking a group of young farmers for a tour of the farm, as part of the FUW Academi organised by the Union's Pembrokeshire branch, Michael explains some of the benefits of doing things differently.

"Milk output has changed dramatically from the conventional system to the robotic system. It's fair to say the cost of production is higher but the rewards in both animal health and milk quality are worth it.

"We can produce consistent volumes of high constituent milk which suits our milk contract with First Milk who turn our milk into cheese. The robots allow us to have better control over feeding, and cows who have the potential to produce a lot of milk get the opportunity without the limitations of twice a day milking.

"Our foot health has improved and our mastitis rates have dropped, and hence we have seen a dramatic reduction in treatments. However, with lower cell counts and a far more hygienic environment from milking to accommodation, we have to be even more vigilant against particular mastitis bugs," said Michael.

Showing the group the new robots and demonstrating how they work, Michael adds: "There are so many different reports and settings, which provide us with all the information we could possibly need. For example, I can tell if a cow has mastitis one day before she actually shows clinical signs. I also know exactly how much milk a cow produces, how often she wants to walk through to be milked or if she is not walking through as often as she did before. There is no place for a poorly cow to hide, the system will pick it up straight away."

The cows learn how to use the system, which usually takes them about 15 attempts or three days and then they know what to do, he says.

"Once they have learned how to go through the gate, they get milked automatically if they are ready for milking and if they try to go through too often, they get redirected to the exit.

"This type of system works well for us. Essentially, we never finish milking, the system runs 24 hours a day, seven days a week. The cows do it themselves and are feeling better for it."

But even though the milking happens automatically, Michael still has to make sure that everything runs smoothly. For that to happen he says, maintenance is key.



From left, Gareth, Annette and Michael - the passion for dairy runs deep in the Williams family.

"Just because the cows get milked automatically, doesn't mean there is no work for me. The system and robots need maintaining and looking after. Maintenance is key to make sure the robots work well. You wouldn't get on a plane that hasn't been serviced would you, so this is no different.

"We have also learned that sand bedding doesn't work with robots because the grains get into all the little spaces and cause problems. So we use sawdust instead, which is renewable and doesn't break the machines," he explains.

The milking cows are fed a TMR (total mixed ration) of grass silage, maize and some blend depending on analysis of the forages to balance the diet. They are also fed a concentrate in the robot depending on the stage of lactation and yield.

Dry cows are fed a more mature late cut silage which is baled, this is then mixed with straw and the dry cows are housed separately to the main milking herd. Youngstock will all be reared on the farm with beef animals sold as store cattle.

"The silage for the dairy cows is made using a multicut technique whereby the silage is cut around May 12 and every 30-32 days thereafter through the summer. Around 40 acres of maize is grown on the farm and this acreage will probably increase going forward," Michael explains.

Five years ago the family looked at their slurry storage and utilization, deciding they needed to be able to time their applications better with the aim of reducing bought in nutrients.

"Due to our high rainfall, we decided a slurry tower gave us the best solution. All of the yards are covered avoiding any clean rainwater entering the storage. The yards and robot unit all feed into a small reception pit (approx. 150,000 gallons).

"During the summer this is emptied after each cut of silage and during the winter the reception pit contents are pumped to the tower (600,000 gallons) to store until more favourable weather conditions permit us to apply it to the fields in the spring," Michael says.

The system has allowed the family to greatly reduce the amount of bought-in fertilizer with no P&K fertilizer used at all and only targeted Nitrogen applications. Regular soil sampling also allows them to monitor the soil indices and adjust application rates.

Aware of the proposed slurry regulations which may come into force in 2020, Michael has concerns: "Currently our storage and application rates would meet proposed changes to manure use but we are always looking to improve our situation and covers for the slurry tower and reception pit are being looked at.

"Any changes to legislation that includes a dated closed period for spreading manures could be problematic, even for us with adequate storage. It is better to be able to apply whilst weather and crop/ground conditions are favorable rather than following a calendar date."

The changes implemented over the years, from better slurry management to automated milking mean that the family have a more flexible schedule on the farm.

"There is no tie at both ends of the day with milking and this is especially seen in the afternoon when jobs would be wound up early to go and fetch cows and milk. I find more time to help with our children before and after school and my father has more time to dedicate to rearing calves.

"This has also seen improved health and reduced treatments within the calf shed. There are often days when we are busy with silage or simply having a family day off-farm and we know that the robotic unit continues to tick over and cows remain happy and content," he said.

The changes implemented over the years, from better slurry management to automated milking mean that the family have a more flexible schedule on the farm.



Maintenance is key.



Cow scratcher - a welcome addition to the cow shed.

Robotic benefits on dairy farm



The FUW Academi hear how robotic milking has made a positive impact on farm and family life.



Michael explains the feeding regime on farm to the FUW Academi group.



Taking a group of young farmers for a tour of the farm, as part of the FUW Academi organised by the Union's Pembrokeshire branch, Michael explains some of the benefits of doing things differently. "Milk output has changed dramatically from the conventional system to the robotic system. It's fair to say the cost of production is higher but the rewards in both animal health and milk quality are worth it. We can produce consistent volumes of high constituent milk which suits our milk contract with First Milk who turn our milk into cheese. The robots allow us to have better control over feeding, and cows who have the potential to produce a lot of milk get the opportunity without the limitations of twice a day milking. Our foot health has improved and our mastitis rates have dropped, and hence we have seen a dramatic reduction in treatments."

Planting Hedges or Woodland?

- Trees & Hedging Plants
Native Provenance, Handled with GREAT CARE
- Transparent Spiral Guards
"OWN Brand" Better Quality
Overlapped for easy chemical control
- Fine Mesh Shelters for Shrubs & Trees
- no outdated tubes!

All Planting Accessories, Deer Fencing etc.
Farm Forestry Co Ltd
 Tel: 01588 650496 | Fax: 01588 650631
www.farmforestry.co.uk

KeBeK - meet the team

Who's in your team?

Keith Owen is an Environment Consultant and Director of KeBeK Ltd, leading delivery of on-farm infrastructure consultancy for Welsh Government and Natural England. Expertise is based on over 28 years' experience within the UK agriculture industry in environmental consultancy, farm building design and conversion, project management and training. Specialising in one to one advice for farmers on all aspects of pollution control, regulatory compliance, planning and building design.



Rebecca Jones is an Environment Consultant and Director of KeBeK Ltd. Rebecca has delivered rural environmental confidential advice for agricultural pollution and risk assessments, pollution prevention and anti-pollution design for over 30 years. She has undertaken advisory consultancy roles for RSK ADAS and AEA Technology, and a regulatory role for the Environment Agency and its predecessors National Rivers Authority. Rebecca's areas of expertise are water quality, regulatory and environmental permit compliance, resource efficiency, waste minimisation and payment for ecosystem services (PES). A comprehensive understanding of water and waste legislation, along with other environmental statutory frameworks, enables Rebecca to manage resource efficiency programmes for a range of clients.

Brian Klass has recently joined KeBeK and specialises in agricultural pollution control and was responsible for environmental incident response at tactical and operational level. A highly experienced environmental regulator with long standing experience of both the waste and water sector. During Brian's 32 years with Natural Resources Wales (NRW, Environment Agency Wales and Preseli District Council), he was at the forefront of environmental compliance, protection and regulation. Excellent interpersonal and communication skills and significant experience influencing the private, agricultural industry sector and key stakeholders. Thorough, methodical and practical, maintaining high standards of personal pride.



Enys Young is the Operational Manager for KeBeK Ltd, her roles encompass excellent bilingual communications with the clients and consultants; establishing client needs, scheduling work delivery to client specification, maintaining records in line with legislative and client standards and ensures that all work is delivered on time and to the correct format. Enys ensures that the businesses financial management system is up-to-date, and that all data controls are in place. Enys has worked in the Agricultural industry for over 30 years and has been involved in many changes throughout agriculture. Having worked with staff delivering agriculture expertise across a range of agricultural and land management sectors, Enys has gained knowledge and insight, of many diverse aspects of agriculture including the dairy industry, beef and sheep, pigs and poultry and arable and supporting consultants delivering farm buildings and infrastructure advice.

Why was the business started?

After delivering farm infrastructure and building design advice and spending a large proportion of our time delivering work outside Wales, we wanted to spend more time helping Welsh agriculture with practical economic solutions to achieve regulatory compliance and making the most of the resources we have here in Wales.

Here at KeBeK we are passionate about the Welsh environment, the heritage and hiraeth for Wales. Together we have many many years of trusted and valuable experience.

Why the name KeBeK?

The company was set up by Keith and Rebecca (KeBeK). We thought it was catchy and read the same backwards. Nothing more exciting than that sorry!

What can you help members with?

Our main area of work at the moment is helping farmers improve farm infrastructure and compliance with current and proposed pollution regulations. Our experience of the regulations and knowledge of what NRW expect, helps to ensure that farmers can get to compliance in a practical way, that is affordable. We often act as the "go between" with NRW and planning authorities.

The other areas of work we are involved in is farm building design, planning applications and associated controls for drainage and water, which ties into the regulatory compliance.

Most interesting case you have come across over the years?

All the cases are unique which is what we like about the job. No two farms are the same. We have worked with farms with less than 20 cows and worked for James Dyson who is the largest private landowner in the UK. The diversity of the job is what keeps it interesting. The most satisfying part of the job is seeing the pressure being taken off the farmer when solutions are found.

What would you say are the most common pitfalls when it comes to economic compliance and what could the consequences be?

The most common pitfall is not speaking to someone about the problem. Having someone to talk who is trusted, and in confidence, is essential otherwise the problem escalates, and it is difficult for the farmer to see the way out.

KeBeK offers confidential advice that addresses the problem in a way that is practical and achievable. We will also discuss any issues with NRW if required. We have the trust of the organisation who understand that progress is then being made to address any issues.

How many pollution cases have you dealt with over the last year and how could they have been avoided?

Over the last year we have visited well over 350 farms on pollution related compliance. Farmers are often under the impression that they need new slurry storage, which puts them off getting advice due to the perceived high cost.

New slurry stores are normally the last form of mitigation required. Almost every farm we go to produces more dirty water than slurry and if this is initially addressed, the slurry storage capacity released is often enough to comply with the farm regulations. It is far more cost effective to reduce dirty water than to simply build a bigger slurry store. It is also significantly cheaper!

What are you looking forward to the most in 2020?

Helping farmers understand that the cost of new regulatory compliance will not be as expensive as they think it will. The experience that KeBeK has, helping farmers in this area, will be invaluable to the Welsh Agriculture industry.

Reducing the stress and offering solutions for worried farmers is, and will be, the best part of our job. We, at KeBeK, believe that each one of us can make a difference to the environment: to the quality of our Welsh rivers and seas; after all no step is too small as long as it is in the right direction.

How do your services set you apart from other companies?

Simply experience. We have been to literally 1000's of farms in the last 30 years. No other company offers the on-site practical experience that we can offer in this field. We approach each farm with the view of "How can we achieve regulatory compliance in the most economical practical way?"

Anyone can turn up and provide solutions that are expensive and will probably be unaffordable in the current economic climate. We approach the problem as if we had to pay for the work ourselves and what would we do if it was our money being spent.

What makes being based in Wales so important to you?

Keith says: "Having worked away from Wales for 75 per cent of the last 15 years I knew I wanted to come back to stay in Wales. You simply can't beat working in Wales, seeing the countryside and meeting the different characters."

Rebecca adds: "Water is taken for granted here in Wales as we have so much rain. We need clean water that is fit for life, fit enough for our fishes and the food that they eat, good enough for our children to swim in and for animals and us to drink - KeBeK can help to achieve this."



**Rural
Environmental
Services**

- Confidential pollution prevention advice
- Economic compliance solutions
- Agricultural planning and building design

Greener by design

Contact us

Tel: 07368391501

Email: enquiries@kebek.co.uk

Kebek Ltd, specialise in

- pollution prevention advice on farms and in rural businesses;
- confidential and practical solutions to regulatory compliance; and
- design, technical and planning support for agricultural structures.

With over 60 years experience in the sector, we can make a real difference to your business. Working with members, we'll look for cost effective ways to reduce your environmental impact and achieve regulatory compliance.

Passionate about Wales - our environment, heritage and community - we're looking forward to working with members of the Farmers' Union of Wales.

Highlighting Brexit fears

THE implications of a 'hard Brexit' and fear of losing free access to the EU's Single Market, as well as the pivotal role farming families play in keeping the Welsh economy going, were highlighted by the Langford family from Tredegar in a meeting with local AM and former Welsh Agricultural Minister, Alun Davies.

Wayne, his wife Tracy and daughter Emily, farm at Penrhyn Farm, Nantybwh, Tredegar, which is situated 1,100 feet above sea level at the head of the Sirhowy valley. The typical family farm extends to 140 acres, half-owned, half tenanted, plus hill rights on the Llangynidr Common and is home to 300 Talybont type Welsh Mountain ewes plus followers, which are kept together with 20 Galloway cross Angus Suckler cows.

Wayne regards the Brexit negotiations pivotal to the future of Welsh Hill farms and was keen to highlight the vital role farmers play in preserving the rural economy. Speaking on farm, he said: "Farming matters in so many ways that are seldom realised. Not only do farms produce food but they are also the cornerstone of our rural economies. Family farms, in particular, are at the heart of our rural economy, caring for our landscape, and of course our culture.

"They make innumerable other contributions to the well-being of Wales and the UK. Central to such benefits is the production of food and the improvement in domestic food security. All those businesses who supply essential services, materials, and machinery to farmers, through to the farmers themselves and their products, to the processors who turn them into food, and the consumers

themselves, have a critical part to play in our rural economy. And that is at stake if we get Brexit wrong."

Wayne is particularly concerned about a bad Brexit outcome and highlighted that as an industry, Welsh agriculture is particularly vulnerable to the impacts of losing access to the affluent mainland European markets which are on our doorstep.

"The implications of a 'hard Brexit' and losing free access to the EU's Single Market would be particularly acute for Wales. As a family, we are very concerned about it all and urge the next UK Government to do all it can to ensure that those fears don't become a reality.

"Of course these concerns don't fall into the remit of the Welsh Government but I would urge every politician, whether in Cardiff or Westminster, to work in genuine partnership with the agricultural industry and develop a framework of common principles which underpin further policy development. It really is crucial to ensure the economic and environmental sustainability of family farms, for the sake of all our futures."

During his visit, the former Minister, who was born close to Penrhyn Farm, emphasised that he realised the vital role that farming plays in preserving the uplands of Wales.

"I would like to thank Alun Davies for joining us on the farm visit and listening to our member's concerns. I feel encouraged that he pledged to support innovative ways of maintaining stock on common land in order to preserve the ecological balance, and environmental stability of the commons," said FUW Gwent County Executive Officer Glyn Davies.



From left, FUW Gwent county chairman Wayne Langford, FUW Gwent County Executive Officer Glyn Davies, member Chris Lewis, FUW Vice President Brian Bowen and Alun Davies AM.

FUW COUNTY NEWS/NEWYDDION O'R SIR

01248 750250

anglesey@fuw.org.uk

ANGLESEY

Brecwast Cymreig a rhoi'r byd yn ei le!

Pa ffordd well i gychwyn eich penwythnos?! Dewch i ymuno a ni ar gyfer ein brecwast ffermdy elusenol eleni draw yn Neuadd Fwyd, Cae Sioe Môn ar fore Sadwrn 18fed o Ionawr rhwng 9yb-11.00yb. Bydd croeso cynnes yn eich aros felly peidiwch ag oedi cyn archebu eich lle drwy gysylltu gyda ni yn y swyddfa ar 01248 750 250.

What better way to start your weekend?! Come and join us for our charity farmhouse breakfast this year at the Food Hall, Anglesey Showground on Saturday January 18 between 9am-11am. A warm welcome awaits you so please do not hesitate to book your place by contacting us at the office on 01248 750250.

Holi'r ymgeiswyr!



Cafwyd noson hynod o ddifyr a thrafodaethau tanllyd yng nghyfarfod Hustyngau Amaethyddol y sir a gynhaliwyd yn ddiweddar yng Nghartio Môn, Bodedern, ar y cyd gyda NFU Cymru a'r CFFI. Dyma oedd cyfle'r aelodau i leisio eu barn a holi'r ymgeiswyr cyn bwrw eu pleidlais yn yr Etholiad Cyffredinol. Hoffwn ddiolch i'r tri ymgeisydd am roi eu hamser i fynychu'r cyfarfod.

The County Agricultural Hustings was held recently at Cartio Môn, Bodedern, joint with NFU Cymru and the YFC. It was a very entertaining evening with heated discussions. This was an opportunity for members to voice their opinions and question the candidates before casting their vote in the General Election. I would like to thank all three candidates for taking the time to attend the meeting.

01982 554030

breconandradnor@fuw.org.uk

BRECON & RADNOR

We are delighted to welcome Mrs Catrin Price as our new County Executive Officer. Catrin was previously employed by the FUW in our Carmarthen office, before briefly leaving to work for Wales YFC.

Outside of work, Catrin farms in partnership

with her husband in Llangadog, Carmarthen, and has had success showing their flock of Badger Face Sheep, winning Overall Hill Champion at the Royal Welsh in 2019.

We look forward to welcoming Catrin to the office and working with her in the future.

01286 672541

caernarfon@fuw.org.uk

CAERNARFON

Cinio Blynyddol



Cynhaliwyd Cinio Blynyddol y sir yng Ngwesty Nanhoron, Nefyn mis diwethaf. Cafwyd noson lwyddiannus gyda chinio bendedig ac adloniant gan Gwilym Bowen Rhys. Pawb wedi mwynhau.

The County's Annual Dinner was held at Nanhoron Hotel, Nefyn last month. We had a successful evening with a wonderful dinner and entertainment by Gwilym Bowen Rhys. Everyone enjoyed.

01267 237974

carmarthen@fuw.org.uk

CARMARTHEN

Carmarthen hustings



Farmers from Carmarthen West and South Pembrokeshire came together to quiz the general election hopefuls in an agricultural hustings event, which was held at the Carmarthen Athletic Rugby Club on December 2.

The well-attended event, which was hosted in partnership with NFU Cymru and Carmarthenshire YFC, heard from Simon Hart (Conservative), Marc Tierney (Labour), Alistair Cameron, Welsh Liberal Democrats and Dr Rhys Thomas Plaid Cymru, as the candidates outlined their party policies before the floor was opened to questions from the audience.

Sub branch meetings

Guest speakers will be FUW Policy Officer discussing a range of relevant topics and Mark Williams, Life Consultant, FUW Insurance Services, everyone welcome. Dates as follows:

Monday January 13, 7.30pm - Clwb Top Upper Tumble Social Club, Tumble.

Thursday January 23, 7.30pm - Talardd Inn, Llanllwni.

Thursday February 13, 7.30pm - The Cottage Inn, Llandeilo.

Thursday February 20, 7.30pm - Llanboidy Sports and Social Club.

Cyfarfod a chinio



Cyfarfod pwyllgor gwaith sirol a chinio Nadolig a gynhelir ar nos Iau 5ed o Ragfyr yn yr Emllyn Arms, Llanarthne. / County executive meeting and Christmas dinner held on Thursday December 5 at the Emllyn Arms, Llanarthne.

NOSON BINGO!
BINGO NIGHT!

Croeso i bawb!

Everyone welcome!



7.30YH Nos Lun 6 Ionawr 2020 / 7.30PM Mon 6 Jan 2020

Yn codi arian i / In aid of: DPJ Foundation

Talardd Arms Llanllwni



01570 424515

ceredigion@fuw.org.uk

CEREDIGION

Ceredigion farmers quiz election candidates

Farmers from Ceredigion turned out in force to quiz general election candidates at a hustings organised by the local FUW branch and Ceredigion YFC. The event, which was held on Wednesday December 4 at Lampeter Rugby Club and chaired by YFC Young Farmer of the Year Endaf Griffiths, heard from Ben Lake - Plaid Cymru, Mark Williams - Liberal Democrats, Dinah Mullholland - Labour, Amanda Jenner - Conservatives, Chris Simpson - Green Party and Gethin James - Brexit Party.

Speaking after the event, FUW Ceredigion County Chairman Morys Ioan said: "I would like to thank everyone who attended the hustings and used the opportunity to find out what each of the candidates have to offer in terms of agriculture and their thoughts on wider farming matters. "We had a very interesting and lively discussion on a number of agricultural topics, mainly Brexit, TB and what the future of agriculture could bring for young farmers."



01824 707198

dinbychflint@fuw.org.uk

DENBIGH & FLINT

Election hustings



We held an election hustings on December 9 where three candidates - Conservative candidate for Clwyd West David Jones (left), candidate for Clwyd West Liberal David Wilkins (middle) and Plaid candidate for Clwyd West Elfed Williams (right) outlined their party policies. Labour were invited but did not send anyone.

Flint Christmas Social Event



Flint Christmas Social Event was held on Wednesday December 11 with a visit to New Horizon Plastics and a Christmas meal at Cross Keys Pub in Sychdyn, Mold. New Horizon Plastics is a company in Flint who are looking at Farm plastic recycling and we had a very enjoyable evening.

GLAMORGAN

Glamorgan hustings



Farmers from the Vale of Glamorgan came together to quiz the general election hopefuls in an agricultural husting event, which was held at the Bear Hotel in Cowbridge.

The well-attended event, which was hosted in partnership with NFU Cymru, heard from Alun Cairns (Conservative), Belinda Loveluck-Edwards (Labour) and Anthony Slaughter (Green Party), as the candidates outlined their party policies before the floor was opened to questions from the audience.

FUW Glamorgan chairman Richard Walker said: "I would like to thank the candidates who joined us on the night for their contributions and the thought-provoking conversations. It was by no means a single subject discussion and our farming members engaged with the candidates about some of the more local issues that affect their livelihood and community.

"Topics including climate change, bovine TB, a second referendum and the current Brexit deal, how Brexit would impact on animal welfare standards and food imports and also the supermarket stronghold on the consumer market and the need for a Grocery Adjudicator with stronger powers."

01341 422298

meirionnydd@fuw.org.uk

MEIRIONNYDD

Cyfarfod yr ymgeiswyr

Trefnwyd cyfarfod ar gyfer ymgeiswyr yr Etholiad Cyffredinol yn etholaeth Meirion Dwyfor ar ddechrau mis Rhagfyr. Fe'i cynhaliwyd yn Clwb Pêl Droed Porthmadog, a daeth nifer dda ynghyd. Roedd y cyfarfod wedi ei drefnu ar y cyd gyda Mudiadau Ffermwyr Ifanc Eryri a Meirionnydd ynghyd a NFU Cymru, ac rydym yn ddiolchgar iawn am y cyd-weithio. Roedd gwahoddiad wedi ei roi i'r holl wleidyddion oedd yn sefyll yn yr etholiad, ond yn affodus dau wleidydd ddaeth i annerch, sef Liz Saville Roberts o Blaid Cymru a Tomos Dafydd Davies, o'r Blaid Geidwadol.



Trafodwyd nifer fawr o bynciau, ond yn ddi-os Brexit oedd prif thema'r noson gyda'r pynciau a godwyd i gyd yn gwyrdroi o amgylch yr effeithiau posib y byddai ymadael a'r Undeb Ewropeaidd yn ei gael ar fywoliaeth yr etholwyr.

Cadeiriwyd y cyfarfod gan Sion Ifans, Cadeirydd FUW Meirionnydd, ac fe'i gwelir uchod yn estyn croeso i'r gynulleidfa.

In early December a meeting was arranged for the General Election candidates of the Meirion Dwyfor constituency. It was held at Porthmadog Football Club and was well attended. The meeting was organised joint with Eryri and Meirionnydd YFC and NFU Cymru, and we are very grateful for the co-operation. All the politicians standing for the election had been invited, but unfortunately only two politicians attended, Liz Saville Roberts from Plaid Cymru and Tomos Dafydd Davies, from the Conservative Party. Many topics were discussed, but Brexit was undoubtedly the main theme of the evening with the issues raised all revolving around the potential effects of leaving the European Union on the livelihood of the electorate. The meeting was chaired by Sion Ifans, Chairman of FUW Meirionnydd and is seen welcoming the audience above.

Clwb 100

Tynnwyd gwobrau ein Clwb 100 blynyddol yn ddiweddar, a gweler isod rhestr yr enillwyr. Rydym yn ddiolchgar iawn i bawb sydd wedi cefnogi ein Clwb 100 eto dros y flwyddyn ddiwethaf, a chodi arian i gronfa gweithgareddau cymdeithasol y gangen sirol.

The prizes of our annual 100 Club were recently drawn, and below is the list of winners. We are very grateful to everyone who has supported our 100 Club again over the past year, and raised money for the county branch's social activities fund.

Mis Medi / September

Dylan Jones, Tyddyn Briddell, Cwm Maethlon
Teulu Penbryn Mawr, Arenig
Glyn Griffiths, Bodlondeb, Rhyd.

Mis Hydref / October

Iona Roberts, Islwyn, Llandderfel
Mererid Jones, Henllys, Mallwyd
Dewi Thomas, Faeldref, Dyffryn Ardudwy.

Mis Tachwedd / November

Simon Jones, Ysguboriau, Tywyn
Alun Edwards, Cae Coch, Rhydymain

Teulu Cymerau, Aberllefenni.

Mis Rhagfyr / December

Teulu Penbryncoch, Parc
Swancott Pugh, Henblas, Llwyngwril
Dilys Hughes, Garej Mallwyd.

Gwobrau Nadolig / Christmas prizes

Edwin Jones, Nant, Llanegryn
Dewi Owen, Esgairgyfela Aberdyfi
Teulu Cymerau, Aberllefenni
Rhian Roberts, Rhydycriw Llanegryn
Gwilym James, Arlyn, Trawsfynydd.

FUW 100 Club

Great opportunity to support your local county office activities by joining our 100 Club!

For just £10 a year, you will have the chance to WIN one of two prizes in our draw!

(Prize draw takes place every 2 months)

Contact Chris on
01446 774838
for more information

Thank you for
your support!

Join
today!

We will be drawing our 100 Club again in January 2020 - it is 10 per number and we draw the numbers for a first prize of £50 and a 2nd prize of £20 every two months. Please contact the office for more information.

01873 853280

gwent@fuw.org.uk

GWENT

Is your land correctly Registered?

Gwent County Executive Officer Glyn Davies is warning all members to ensure that their land is correctly registered with the Land Registry. This follows an alarming discovery, made by a member recently, when it transpired that the former Forestry Commission, now Natural Resources Wales, or Welsh Government had registered part of his farm as belonging to them.

Mr David Van Poucke, who farms at Gilfach Y Rhyd, Abercynon, in the South Wales Valleys, was amazed to find that 12 acres of his farm, including the house and buildings was incorrectly registered by the Welsh Government in 2006.

The farm was purchased from the Forestry Commission by David's parents in 1968, but was never registered in their name. Following the death of his mother, last year, David needed to resolve some legal issues, and this is when a search of the Land Registry revealed the mistake.

Fortunately, David was in possession of the title deeds, and the matter is in the process of being resolved. However, he is keen to point out the difficulties such a scenario has caused in terms of grant applications with the local Authority, legal expenses, and concern over the eight months taken to put the matter right.

Glyn Davies added: "Members who bought their farms, or individual blocks of land from the Forestry Commission, may be particularly vulnerable to such a mistake being made. A relatively inexpensive search of the land registry will reveal any errors, and in the long-run, could help save thousands of pounds in legal fees to correct any errors."



David Van-Pouck outside his Farm House.

01686 626889

montgomeryshire@fuw.org.uk

MONTGOMERYSHIRE

FUW election hustings

Monday December 9 2019, saw our FUW Election Hustings at Welshpool Livestock Sales, in Welshpool chaired by Montgomeryshire FUW County Chairman, Bryn Francis.

All four candidates Craig Williams (Conservative), Kishan Devani (Liberal Democrat), Gwyn Wigley Evans (Gwlad Gwlad) and Kait Duerden (Labour) took to the platform to talk about their parties manifesto followed by a questions and answer session.



From left, Bryn Francis (Montgomeryshire County Chair), Gwyn Wigley Evans (Gwlad Gwlad), Kishan Devani (Liberal Democrat), Craig Williams (Conservative) and Kait Duerden (Labour).

Trip wnaiff aros yn y cof am byth



Eurgain Haf (2il o'r chwith) gyda'r aelodau arall ar y daith.

gan Eurgain Haf, CFFI Bro Ddyfi

Ym mis Hydref 2019, cefais i, a pum aelod arall o CFFI Cymru gyfle arbennig i deithio i'r Wladfa i wario pythefnos yn dysgu am ddiwylliant, ffordd o fyw, profi profiadau ac yn fwy na dim cyfarfod cymeriadau na anghofia i fyth!

Diwrnod tawel oedd y diwrnod cyntaf, gyda chyfle i flasau Alfajores Dulce de Leche a Choripan ac ymweld â Casa Rosada thirnodau eraill yn y ddinas. Yn ystod yr ail ddiwrnod ym Muenos Aires, cawsom gyfle i ymweld â'r farchnad wartheg fwyaf yn y byd (Marchnad Liniers) ac ymweld â Cabana Las Lilas (Cattle Fertility Centre), a mynd i noson Tango gyda'r nos.

Roedd hi'n amser ffarwelio â'r ddinas, a chychwyn ar ein taith bws 19 awr i lawr i'r Wladfa. Cyferbyniad llwyr â'r ddinas! Wedi cyrraedd Trelew, ac wedi croeso cynnes gan Alejandro Jones, ein tywysydd am y 10 diwrnod nesaf, roedd hi'n bryd mynd draw i'r Gaiman, ein cartref yn Nyffryn Camwy. Seremoni'r Orsedd oedd yn ein disgwyl wrth i ni gyrraedd, er bod rhan fwyaf ohonom wedi bod yn rhan, neu wedi gweld seremoni'r orsedd yng Nghymru, roedd hon yn wahanol, ac yn unigryw.

Treulio ni tua phum niwrnod yn y Dyffryn, yn ymweld â ffermydd defaid a gwartheg, ymweld ag Ysgol Gymraeg y Gaiman ac Ysgol yr Hendre, treulio amser ym Mhorth Madryn, lle glaniodd y Cymry cyntaf yn 1865 a mynychu Eisteddfod Chubut yn Nhrelew - heb anghofio am yr holl ganu a chymdeithasu oedden ni'n ei wneud ym mhobman!

Roedd hi'n amser ffarwelio a'r dyffryn, a chroesi'r paith; taith fws 11 awr i gyrraedd Trevelin, ac anodd coelio fod y Cymry wedi gwneud yr un daith dros y paith, ond ar gefn ceffylau dros 150 mlynedd yn ôl! Yn yr Andes cawsom gyfle i ymweld â ffermydd, Gwinllan Nant y Fall a Fferm Tiwlips. Cawsom groeso arbennig yn ein hail asado gan deulu Alejandro a oedd yn brofiad gwahanol i'r dyffryn, ond

sbsial mewn ffordd wahanol! Wedi treulio pedwar diwrnod yn yr Andes, cawsom ein gwahodd i swper ffarwel yng Nghymdeithas Cymraeg Esquel, ond doedden ni'n bell o fod yn barod i ffarwelio, felly dyma newid trefniadau, a bwcio awyren hwyrach i fynd a ni'n ôl i Buenos Airies!

Roedd y daith adref yn un llawn emosiynau. Balchder o fod yn Gymraes ac o'r Cymry gwreiddiol yna fu mor ddewr 150 o flynyddoedd yn ôl, ac yn fwy na dim hiraeth am y lle a'r cymeriadau oedd yno!

In October 2019, five other Wales YFC members and I had the wonderful opportunity to travel to Patagonia, a trip that I will never forget! The first day was a chance to see Alfajores Dulce de Leche and Coripan and visit Casa Rosada and other landmarks in the city. During the second day in Buenos Aires, we visited the largest cattle market in the world (Liniers Market) and visited Cabana Las Lilas (Cattle Fertility Centre). We then travelled down to the Wladfa, on arriving at Trelew, we were warmly welcomed by Alejandro Jones and we headed to the Gaiman, our home in the Camwy Valley. We spent about five days in the valley, visiting sheep and cattle farms, visiting Ysgol Gymraeg y Gaiman and Ysgol yr Hendre, spending time in Porth Madryn. We then said goodbye to the valley, and crossed the pampas to Trevelin, in the Andes we had the opportunity to visit farms, Nant y Fall Vineyard and a Tulip Farm. After spending four days in the Andes, we were invited to a farewell dinner at the Esquel Welsh Society, but we were far from ready to say goodbye, so plans were changed and we booked a later plane to take us back to Buenos Aires! The journey home was full of mixed emotions. Proud of being Welsh and of those original Welshmen who were so brave 150 years ago, and above all the nostalgia for the place and its characters!

01437 762913

pembrokeshire@fuw.org.uk

PEMBROKESHIRE

Farms For City Children

It was with great pleasure that our County Chairman, Alun Phillips, recently presented a cheque for £587.59 to Dan Jones, from Farms for City Children, at Lower Treginnis, St David's. They are currently in the middle of re-designing their vegetable growing operation, so have decided to use the money towards the costs of this project and we look forward to seeing the outcomes. However, this wouldn't have been possible without members supporting our Evening with the Welsh Whisperer and our fundraising efforts at the Pembrokeshire County Show, so a big thank you to you all.



From left, County Chairman Alun Phillips and Dan Jones, Farms for City Children.

Breakfast Events

As always we are looking for any willing volunteers to assist us at our charity breakfast events in the county either through providing your time or some produce. We will be at Hermon Hall, on Tuesday January 21 and Crundale Hall on Friday January 24 2020, so if you are able to assist please get in touch. Any assistance no matter how small would be greatly appreciated. Telephone: 01437 762913 or e-mail: pembrokeshire@fuw.org.uk

Greening requirements for 2020

If you would like any assistance with the calculation of your EFAs or crop diversification figures for 2020, before you plant your crops, please contact the county office to make an appointment.

Transfer and Lease of BPS Entitlements

If you wish to trade entitlements in time for the 2020 scheme year you will need to ensure that your transfer form is submitted, via RPW Online, before midnight on 30 April 2020.

Upcoming EOI Window Details

Scheme	Summary	Window opens	Window closes
Sheep and Goat annual inventory	It's that time of year again to complete your Sheep and Goat annual inventory. All keepers should have received a paper form in the post throughout December. The annual inventory must be filled in with the number of sheep and goats you own on January 1 2020. The form must be returned by January 30 2020.		30 Jan 2020
BPS Transfer of Entitlements	You can now transfer BPS entitlements through sale, lease or inheritance. It must be accessed through the RPW online account. The recipient of entitlements transferred by sale or lease must meet the Active Farmer requirements (see SAF Rules for details).	3 June 2019	30 April 2020

Want to protect water quality? Plant trees along river banks

by Dr William Stiles, Farming Connect Knowledge Exchange Hub, IBERS, Aberystwyth University

IN recent years the impact of pollution on freshwater ecosystems from agricultural activities has been recognised as a major hazard for freshwater biodiversity and for the quality of surface and ground water reserves. A key challenge facing agriculture is how to reduce the impact of nutrient pollution generated by agricultural activities, particularly in the case of non-point source or diffuse pollution.

Riparian buffer strips are corridors of vegetation which flank the sides of freshwater systems such as rivers and streams and provide a barrier between field systems and freshwater systems, reducing the transfer of sediment, nutrients, and pesticides into freshwater ecosystems. Large woody vegetation buffer strips can also act to stabilise riverbanks, both by reducing the potential for river erosion directly and by restricting livestock access, which limits trampling damage.

The establishment of even narrow vegetation buffer strips (<3 metres) alongside watercourses in agricultural landscapes, will reduce some of the impact of agricultural pollution and will add benefit

in terms of riverbank stability and increased carbon sequestration in woody biomass, where trees are utilised as a buffer.

However, in general terms, to significantly reduce this impact to around or near to zero, requires buffer strips of significantly greater width. Aiming for a buffer strip width in the region of 30 metres wide should, in most scenarios, be an effective strategy.

Whilst this is a potentially sizeable portion of land for farmers to set aside from production, this may become necessary in order to limit the impact of agriculture on freshwater ecosystems, which is an area of growing concern.

In addition, this action could also be considered an opportunity to increase woody biomass and tree cover within Welsh farming systems, which currently have low tree cover rates.

This may also instigate an alternative production opportunity, such as the cultivation of biomass for solid fuel or biofuel markets. In the future, should government subsidy shift towards a payment system predicated on the delivery of public goods, then this management system could present an opportunity to increase tree cover on Welsh farms, whilst simultaneously reducing the potential for pollution - actions which are likely to have a value in subsidy terms.



Support and guidance for the red meat sector

ARE you a farmer in the red meat sector? If so, make sure you make the most of these opportunities available to you.

Farming Connect are offering the opportunity for businesses in the red meat sector to receive support and guidance through fully funded, bespoke one-to-one surgeries and clinics.

Part of the support offered is available to all red meat producers. This includes 'Cutting your overhead costs' on-farm clinics which includes specialist advice on energy, power and machinery and other overheads where possible savings are achievable.

This could really help you and your business to achieve your goals. Therefore, if you're a farmer within the red meat sector, go for it. Two other categories of support are available to businesses who have participated in the Hybu Cig Cymru / Farming Connect Red Meat Benchmarking programme only.

The first category of support available is 1 hour one-to-one surgeries with a consultant to discuss your individual benchmarking report, and the second is a 2 hour on-farm clinic with a business advisor to discuss how you could increase outputs and improve efficiency.

The window for applying for this support is open between 01/11/2019 and 31/01/2020. All clinics and surgeries will be offered on a first come, first serve basis.

To register for one or more of these clinics or surgeries contact the Farming Connect Service Centre on 08456 000 813 or for further information visit our website gov.wales/farmingconnect Farming Connect, which is delivered by Menter a Busnes and Lantra, is funded by the European Agricultural Fund for Rural Development and Welsh Government.

What you need to know about oil storage regulations



Picture: Certas Energy

OIL storage regulations (OSR) require anyone in Wales who has the capacity to store more than 200 litres of oil for their home or business to install an integrally-banded tank to a required standard for preventing leakage or pollution.

Existing tanks at significant risk (within 10 metres of surface water or wetland, or 50 metres of a borehole or well), have had to comply with the regulations since March 15 2018.

All new or replacement tanks (since March 15 2016) must comply with the regulations from the date of installation. Existing tanks which are not at a significant risk to water will have to comply by **March 15 2020**.

The regulations cover all types of oil (except bitumen) and liquids including petrol, diesel, vegetable oils, bio-fuels, synthetic and mineral oils, and waste oil. **ALL** domestic oil storage tanks i.e. for heating oil are exempt until the tanks are replaced. A farmhouse with occasional office use is categorised as domestic and is exempt until replaced, whereas buildings converted into holiday lets are considered as business and therefore must comply.

The OSR apply to the storage of any oil on farms including the storage of oil used for heating and/or power on premises as defined by the Agriculture Act 1947, therefore red diesel tanks must comply with the regulations. Oil in use within farm machinery is exempt.

Oil stored within a building must also comply with the regulations, however in some cases, such buildings could serve as its own secondary containment (e.g. impermeable walls and sleeping policemen for preventing losses).

For one tank, mobile bowser or Intermediate Bulk Container (IBC), the secondary containment must be able to hold 110 per cent of the volume that the container can hold and be able to withstand a total failure of the full tank.

See Farmers' Monthly Bulletin for further information.

Get to know the Ruthin team

Mari Dafydd Jones

County Executive Officer

How long with the Union? Just over 4 years

Previous jobs/education? European Funding officer for Denbighshire County Council, Community Funding Officer DCC

Home life (married/single etc)? Live on a farm with partner of 14 years Arfon, we have two daughters - Elsi and Effi and over 100 young cattle to feed

Hobbies/other activities outside work? Farming, socialising and drinking Gin

What does your job entail? All sorts of things Some are very random!

Most unusual request? Researching into bull electrification long story don't ask!!

What do you enjoy doing most? Winning cases for members

What's the most important part of your job? Making sure my members are happy and ok

What would you change to make your job even better? More time in the day!!

Typical day? Manic.



Gwennan Williams

Cynorthwy-ydd Gweinyddol

Pa mor hir gyda'r Undeb? 17 mlynedd

Swyddi/addysg flaenorol? Cyngor Gwasanaethau Gwirfoddol Clwyd, Archifdy Sirol Clwyd, Ffermio a gwraig tŷ

Bywyd cartref (priod/sengl ac ati)? Priod â Iwan ers 35 mlynedd, tair merch - Linor, Heledd ac Ilid a 4 o wyrion - Nico, Mabon, Owain ac Aron (digon i gadw fi'n brysur tu allan i oriau gwaith!!)

Diddordebau/gweithgareddau eraill y tu allan i'r gwaith? Cerddoriaeth, carafanio, cymdeithasu a gwarchod!

Beth mae eich swydd yn ei olygu? Popeth, o wneud y banded i lenwi ffurflenni BPS

Cais mwyaf anarferol? Cael galwad ffôn gan berson enwog yn gofyn ble allai gael mul ar gyfer sioe nadolig :)

Beth ydych chi'n fwynhau fwyaf? Cyfarfod â'r aelodau, sy'n amrywio o bendraw Sir Fflint i bendraw yr hen Sir Ddinbych ac hefyd yn cynnwys cyn belled ac ardaloedd o Bowys

Beth yw'r rhan bwysicaf o'ch swydd? Sicrhau fod yr Aelodau yn cael y gwasanaeth gorau posib.

Diwrnod 'typical'? Mae pob dydd yn wahanol ond byddaf yn cyfarch yr aelodau yn y swyddfa, ateb y ffôn, edrych ar yr ebyst ac ymateb iddynt, gwaith ar y system aelodaeth - a gwneud paned bob hyn a hyn!



Esther Richards

Account Executive

How long with the Union? 6 years

Previous jobs/education? Worked in retail management for 11 years previously

Home life (married/single etc)? Partner and two children (girls aged 7 & 8)

Hobbies/other activities outside work? Cinema, reading, socialising

What do you enjoy doing most? Spending time with my kids

What's the most important part of your job? Meeting the customers and keeping a relationship going with them

What would you change to make your job even better? Less paperwork and more time to spend out networking and getting new customers

Typical day? Office 9am-5pm - try and go out in the morning or afternoon to visit customers.



Lowri E Davies

Account Executive

How long with the Union? 1 year 2 months

Previous jobs/education? NFU

Home life (married/single etc)? Partnered

Hobbies/other activities outside work? Horse Riding, Socializing, Dining Out, Films

What does your job entail? Renewing Policies and finding new business

What do you enjoy doing most? Farm Visits

What's the most important part of your job? To ensure all customers are given the best customer service

What would you change to make your job even better? Coffee machine in the office

Typical day? Answering phonecalls or out visiting clients.



Lowri Wyn Williams

Account Handler

How long with the Union? Nearly 1 year

Previous jobs/education? Primary school teacher, working at a veterinary surgery

Home life (married/single etc)? Married

Hobbies/other activities outside work? Walking the dogs, shopping, spa days, nights out

What does your job entail? Work with other staff members, providing customers with insurance quotes, processing renewals, chasing and sending out documents, answering the phones, communicating with customers and insurance companies, chasing payments and banking

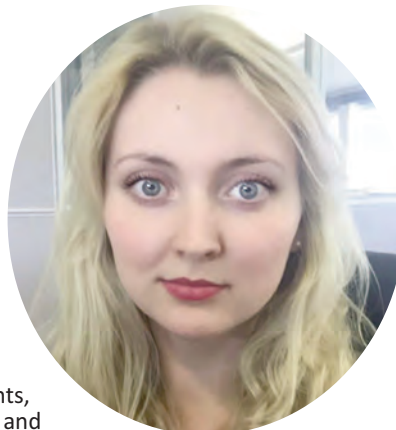
Most unusual request? I had to request photos of a dead dog for a claim

What do you enjoy doing most? Working as a team, providing customers with quotes and communicating with customers

What's the most important part of your job? Making customers happy and getting everything done on time

What would you change to make your job even better? A radio and a coffee machine

Typical day? Sorting through emails, answering phone, processing renewals, quotes, talking to customers.



Christopher Jones

Account handler

How long with the Union? 5 months

Previous jobs/education? CTM & Team Leader at Co-op Ruthin for 4 years and Data Maintenance Analyst at Refinitiv, Wrexham for 1 and a half years

Home life (married/single etc)? Partnered

Hobbies/other activities outside work? Streaming/playing video games, playing music & skateboarding

What does your job entail? Ensuring account execs books are well maintained and supporting customers

Most unusual request? I once had a client ask if they were covered for a dog with a UTI urinating on their carpet

What do you enjoy doing most? Interacting with customers either on the phone or in the office

What's the most important part of your job? Keeping the customers happy

What would you change to make your job even better? Air conditioning and a radio in the office to make it a little more comfortable for us (and the clients of course)

Typical day? Processing renewals, chasing documents from insurers, chasing payments from clients, answering emails/calls and general admin duties.



If you require a translation of the above profiles please contact our Translator Angharad Evans on 01970 820820

MEAT MATTERS

Starting the year off as we mean to go on

by John Richards, Hybu Cig Cymru Industry Development and Relations Manager

A NEW year always brings a refreshed sense of enthusiasm and focus for the year ahead and that is no different for us at HCC. Firstly, we are kick-starting the year off with a UK-wide multimedia campaign focusing on how Welsh Beef and Welsh Lamb is produced sustainably. This will include radio and on-demand television advertising as well as social media and some traditional print advertising. Of course, our iconic Welsh landscape will be the starring in the advert, complemented by voices of real Welsh farmers, telling and showing the true 'Welsh Way' of farming.

Secondly, we are encouraging and inviting farmers to join us to find out more about what we are doing at the start of February. We are holding evening meetings titled 'Innovative Farming for a Sustainable Future' in north and south Wales to allow farmers to find out more about a whole range of HCC work, including the Red Meat Development Programme and our research and development remit.

On Tuesday February 4 we will be at Coleg Meirion-Dwyfor where HCC staff will provide updates on marketing and campaign work and the Red Meat Development Programme as well as special guests Non Williams - who is researching the economic and environmental benefits of upland farming at Bangor University and Alwyn Phillips a ram breeder from Caernarfon who has been very successfully involved in the HCC funded Ram Compare project.

We will also be at Gelli Aur in Carmarthenshire on Thursday February 6 joined again by HCC staff and Non. Additionally, Aled Evans, a farmer from Carmarthenshire



will be sharing his experience of being involved in GrassCheck GB - a nationwide grassland improvement research project also part funded by HCC.

As well as hearing about Non's very topical research at Bangor University and best practice advice from local farmers, these meetings are a chance to engage with HCC and ask any questions you may have about our work and upcoming activities. Staff will be on-hand to answer any queries or questions you may have.

The events will be starting at 6.30pm with a buffet and registration and will end at approximately 9pm with a question and answer session. Farmers can register by contacting HCC on info@hybucigcymru or 01970 625050 before January 24 2020. We hope to see FUW members there!

Yn gyntaf, mae HCC yn cychwyn y flwyddyn gydag ymgyrch amlgyfrwng ledled y DU sy'n canolbwyntio ar sut mae cig eidion a chig oen o Gymru'n cael ei gynhyrchu'n gynaliadwy. Bydd hyn yn cynnwys hysbysebu radio a theledu ar alw yn ogystal â chyfryngau cymdeithasol a rhywfaint o hysbysebu print traddodiadol. Wrth gwrs, tirwedd eiconig Cymru fydd seren yr hysbyseb, wedi'i hategu gan leisiau ffermwyr Cymru, gan adrodd a dangos 'Y ffordd Gymreig' o ffermio. Gwahoddir aelodau FUW i gyfarfodydd 'Ffermio Arloesol ar gyfer Dyfodol Cynaliadwy' a fydd yn cael eu cynnal yng ngogledd a de Cymru er mwyn i ffermwyr ddysgu mwy am waith HCC, am ragor o wybodaeth ac i gofrestru ffoniwch HCC ar 01970 625050 cyn Ionawr 24 2020.

PROPERTY MATTERS

Stay in control to get tax relief on farm estate

by Eifion Bibby of Davis Meade Property Consultants

FARMING estates and farmers looking to reduce the burden of Inheritance Tax on agricultural property can take heart from a recent tribunal which ruled in favour of a deceased farmer over HMRC.

In the case Charnley and another v HMRC [2019], which went to the First Tier Tribunal in July, a farmer (deceased) succeeded in getting Agricultural Property Relief (APR) and Business Property Relief (BPR) on grazing land which he licensed out and his farmhouse.

The farmer in the case, who died in 2013, in his later years allowed other farmers to graze much of his land under annual grazing licences. After his death his estate claimed APR and BPR but the relief was refused by HMRC over the house, barn and buildings.

Whilst HMRC may yet appeal, the significant fact for the Taxpayer was the level of active husbandry undertaken in respect of the land, the grass and others' livestock allowed on under grazing licences to maintain his "working farmer status" in the years prior to death.

He spent a lot of time tending the land and the grazier's cattle, inspecting them at least once a day, very actively managing grass, boundaries, water etc and making silage for which he had a good range of machinery.

This meant that the estate could show that the farmer was in control of the land even though he let it out.

The issue of actual APR should not be a problem in this case as this relief is available on agricultural land no matter whom is doing the actual work provided it has been owned long enough.

The real challenge is for BPR on any excess of market value over agricultural value, and for APR on the farmhouse itself.

Since the deceased was considered an active farmer managing the farm from his home, it followed that the farmhouse should qualify for relief. The buildings were used for housing stock and machinery so could also be included for APR and BPR.

The key message from this ruling is that the more farmers can prove that they do a genuine job of managing the grass crop the better their chances of claiming tax relief on death. Farmers should keep a careful record of all the work they do on their farm even though their land is licensed out.

HMRC seemed to make something of the fact that the farmer did this work voluntarily so it may be worth considering setting up a stock supervision agreement as part of, or alongside, a grazing licence in the future.

Although the hearing was back in July the decision was not issued until October 28.

Eifion Bibby can be contacted at DMPC on 01492 510360, email eifionbibby@dmpcuk.com

Gall ystadau ffermio a ffermwyr sy'n ceisio lleihau baich Treth Etifeddiant ar eiddo amaethyddol gymryd cysur gan dribiwnlys diweddar a ddyfarnodd o blaid ffermwr ymadawedig dros Gyllid a Thollau EM. Yn achos Charnley ac un arall v HMRC [2019], a aeth i'r Tribiwnlys Haen Gyntaf ym mis Gorffennaf, llwyddodd ffermwr (ymadawedig) i gael Rhyddhad Eiddo Amaethyddol (APR) a Rhyddhad Eiddo Busnes (BPR) ar dir pori a'i ffermdy a osodwyd allan. Y neges allweddol o'r dyfarniad hwn yw po fwyaf y gall ffermwyr brofi eu bod yn gwneud gwaith dilys o reoli'r cnwd glaswellt, gorau fydd eu siawns o hawlio rhyddhad treth ar farwolaeth. Dylai ffermwyr gadw cofnod gofalus o'r holl waith a wnânt ar eu fferm er bod eu tir yn cael ei osod allan.

MERCHED MEWN AMAETH

Blwyddyn Newydd - Dechrau Newydd

gan Tegwen Morris, Cyfarwyddwraig Cenedlaethol, Merched y Wawr

WEL mae 2020 wedi cyrraedd, dwi'n cofio ysgrifennu stori yn yr ysgol am sut fyddai'r byd yn y mileniwm sef y flwyddyn 2000, wel erbyn hyn mae 2020 wedi cyrraedd a'n byd wedi cael ei drawsnewid gan dechnoleg.

Rhaid i bensiynwyr bellach wneud cais am gael cerdyn teithio ar lein, rhaid i ffermwyr lenwi ffurflenni ar lein, mae'n heriol a dweud y lleiaf os nad ydych yn defnyddio technoleg neu yn dewis peidio ei ddefnyddio, neu yn wir yn cael trafferth i'w gael yn yr ardaloedd gwledig.

Roedd yna wledd i'r llygaid yn y Ffair Aeaf, gyda chynifer wedi galw i mewn i weld yr arddangosfa. Fe ddaeth y gymdeithas at ei gilydd i gymdeithasu, a dyna elfen sy'n hollol bwysig - y ddawn i siarad a sgwrsio yn hytrach na bod yn gaeth i ffôn ar y lôn neu gyfrifiadur côl.

Beth tybed ydyw eich addunedau blwyddyn newydd? Tacluso drôr bob wythnos, er rhaid cofio'r hen ddywediad "rhaid cael annibendod - cyn cael cymhendod" - fe ddechreuais arni llynedd, ond roedd ambell i wythnos yn amhosibl oherwydd teithio neu brysurdeb - felly dwi'n credu y bydd angen ail gychwyn eleni!

A ydych yn gwneud rhywbeth i chi eich hun ydyw'r cwestiwn a ofynnir yn rheolaidd? Beth am fynd ati i ddysgu crefft newydd, neu ymuno gyda grŵp newydd neu yn wir ddysgu sgil newydd - dwi yn gobeithio gorffen sampler a gafodd ei gychwyn flynyddoedd yn ôl ac ail gydio mewn gwneud cardiau personol, am ba hyd fydd yr addewidion yn parhau ni wn!

Yn ystod mis Ionawr cynhelir cyrsiau crefft yn y gogledd ac ym mis Mawrth yn y de gyda Merched y Wawr, maent yn ddyddiau cymdeithasol a phawb yn cael eu hysbrydoli i wneud mwy ar ôl dychwelyd adref.

Hyfryd oedd gweld cynifer wedi bod yn canu carolau, paratoi torchau Nadoligaidd ac yn wir yn dathlu llwyddiannau mewn ciniawau cymdeithasol yn ystod y mis diwethaf.

Beth am wneud 2020 yn flwyddyn arbennig, yn flwyddyn y byddwch yn mwynhau, yn gwneud rhywbeth i chi eich hun ac yn meddwl am adduned y byddwch yn mwynhau ei weithredu.

It's 2020! Have you made any new year resolutions? What about dedicating some time for yourself? Learn a new skill or join a new group. Let's make 2020 a year to remember, one to enjoy and look after yourself.

Agriculture has the worst rate of worker fatal injury

UNFORTUNATELY, farming continues to have a poor safety record when compared to other sectors of the economy. The figures published in the Health and Safety Executive's report 'Fatal injuries in agriculture, forestry and fishing in Great Britain 2018/19' show 39 people were killed as a result of farming and other agriculture-related activities during the year.

That's six more than last year and six more than the five-year average (33). Of these deaths, seven members of the public were killed, which included two children.

Agriculture has the worst rate of worker fatal injury (per 100,000) of the main industrial sectors. It is eighteen times as high as the average rate across all industries.

Nearly half of the agricultural workers killed were over 60 and transport - overturning vehicles or being struck by moving vehicles - caused most deaths.

Six people died in Wales. That's six families who went through life-changing trauma and many more will have been affected by the tragedies.

- A 24-year-old farm worker was run over and killed by a tractor with a rear-mounted sprayer. He had climbed out of the tractor leaving the engine running. He was found behind the tractor and under the sprayer with the wheels still turning. He died from crush injuries.

- A 50-year-old self-employed farmer was killed when he fell through a fragile roof. He was clearing the valley gutter of the building and fell through a skylight onto the concrete floor. He died from head injuries.

- A 62-year-old self-employed farm partner was crushed and killed when she was run over by an out-of-control telehandler. The driver had lost control on a slope. She died from multiple crush injuries.

- A 21-year-old member of the public was killed when he was struck by a landslide from land where forestry operations had taken place. He was standing on a public road that had been blocked by falling trees during a storm. He died from crush injuries.

- A 3-year-old child was run over and killed by a reversing vehicle and livestock trailer. He fell out of the back of the vehicle and was crushed under the rear wheel. He died from head injuries.

- A 68-year-old self-employed farmer was crushed and killed by a tree branch. After felling the tree, he was removing branches with a chainsaw. He was found trapped beneath a branch and died from crush injuries.

Together with our partners in the Wales Farm Safety Partnership we are working on raising awareness and reducing the risk of harm faced by those in our industry.

The aim for the next three months is to bring better awareness of transport and machinery incidents. Here's what the Health and Safety Executive (HSE) advise when it comes to overturning tractors and other self-propelled vehicles.

What you should know

All vehicles can overturn. Accidents on slopes are not confined to hilly or mountainous regions. They happen just as easily on or near banks, ditches, drains, ramps, uneven or flat ground. Vehicles can also overturn on artificial slopes such as ramps, or when performing tasks such as rolling silage.

When working on slopes the main risks are:

- **Loss of control** - This occurs when wheels lose traction rendering the brakes and steering ineffective. It is easier to lose control of a vehicle on a slope because of the effect of gravity and forward momentum.
- **Runaways** - Loss of control can lead to a runaway where the vehicle starts to move down the slope and the driver is unable to bring it back under control.
- **Jack-knifing** - This happens when a trailer or trailed appliance pushes into the tractor and slews the tractor round. Poor ground conditions, heavy loading and poor wheel grip increase the risk.
- **Overturns** - A vehicle may overturn sideways eg when attempting to traverse across a slope diagonally, or trying to turn down a slope as a consequence of a runaway and jack knife. Machines can also overturn forwards or backwards depending on the situation.

What you need to do

1. Plan the job

Before working on slopes you should assess the risks. Factors to consider include:

- **Gradient** - Different vehicles have different capabilities. Gradients on a slope can vary with some parts steeper than others.
- **Surface** - Different surfaces can affect how well a vehicle can deal with a slope eg grass, earth, loose stones.
- **Ground conditions** - A slope that is safe during dry conditions may become unsafe if wet, waterlogged, frozen or thawing. Uneven ground with ruts, pot holes and deep tracks can affect stability
- **Weather** - Wet and windy weather may increase the risks.
- **Obstacles** - Tree stumps and rocks may be struck, particularly when hidden by vegetation, and cause sideways overturns if struck on the uphill side.
- **Task** - The proposed task will also affect the risk. When using rear-mounted spreaders the load will decrease during spreading and this will reduce rear wheel grip. Tractors with trailed rollers, four-wheel trailers etc will have extra thrust imposed with no additional weight - they may slide away out of control.

2. Select a suitable vehicle fitted with a rollover protective structure (ROPS)

A roll bar or safety cab is designed to provide protection for the operator if the vehicle overturns. Where rollover protection is fitted, you should also have a lap belt or seat restraint fitted if a machine will be used in situations where there is a risk of overturning.

- check that the roll bar or safety cab is in good condition and correctly fitted. Corrosion and incorrect mounting bolts can cause them to fail in an overturn;
- never remove windows or doors from a safety cab;
- fit a lap belt where one has not been installed as original equipment;

To reduce the risk of an overturn:

- make sure that tractors and machines are properly equipped



and maintained, especially brakes, steering and tyres. Consider wide wheel settings for work on slopes;

- select a machine suitable for the job. Tractors with four-wheel drive are likely to be safer to use on slopes compared to those with two-wheel drive.

You may only use a tractor or self-propelled machine without ROPS in low-risk situations such as buildings and orchards or where specific exemptions exist.

3. Work safely

Always use safe systems of work when working on slopes. For example:

- you should turn uphill when working across a slope, and descend straight down the gentlest gradient;
- you cannot always safely descend a slope that you safely drove up;

- select an appropriate gear and speed
- take into account working with trailers, attachments and loads will change the centre of gravity.

To reduce the risk of injury from an overturn:

- stay in the cab and do not try to jump clear, as most deaths and serious injuries involve those who are crushed when they jump or are thrown out of a cab during overturning;
- don't carry loose items such as draw bar pins or tools inside the cab as they become projectiles and may cause extra injury in an overturn;
- wear the lap belt or seat restraint.

Anyone who is required to drive on slopes should receive adequate training so they are aware of the hazards, understand the factors influencing the risks and are able to perform safe driving techniques.

'Mid-life' up-grade for pick-up

by Huw Thomas, Vice Chairman, Welsh Motoring Writers

NISSAN'S current (NP300) Navara was launched in June 2014 for the 2015 'Model Year'. It reached the UK market in January 2016 and received a 'mid-life' up-grade last July. For the EU (and 'associated states') Navaras come from Nissan's plant in Barcelona rather than Thailand - global production centre for compact pick-ups.

Nissan produced its first pick-up in 1935 and the Navara line goes back to 1986. The "D Series" (D22), launched in 1997, got new engines (and the usual up-grades) in 1999 and 2001. D40 followed in 2004/05 with a 2.5 litre Diesel unit. Current D23 came with a 2.3dCi powerplant offering two states of 'tune': 160ps or 190ps.

The lower-output engine is now rated 163ps with torque up 22Nm to 425Nm. This has been done by installing two turbo-chargers as for the 190ps version. All models get a new 6-speed manual gearbox which has both longer ratios and a shorter gear-shift. "Real world" response has improved as a result. On road it's 4x2 rear wheel drive only. High and Low Ratio (centre diff-locked) 4x4 is for snow/ice and off-road.

Many current-generation pick-ups were on the market by 2015/16: VW Amarok, Ford Ranger, Isuzu D-Max and Mitsubishi L200. No surprise then that the NP300 too put a clear emphasis on driving refinement, comfort, ease of use and economy.

The body structure was lighter but more rigid and ground clearance greater despite a lower roof-line - a reduced body-mass/frontal area helped improve fuel consumption and emission figures. Construction remains 'body-on-frame' (separate chassis).

More than a mere catch-up exercise, double cab models dispensed with semi-elliptic leaf springs for the rear beam axle and adopted 5-link coil suspension instead. As part of the latest up-grade, King Cab (+2) variants inherit this coil-sprung set-up too.

SsangYong Musso's back-end assembly is similar but Nissan remains the sole mainstream manufacturer to have taken this step. To accompany its better on-road dynamics, the revised NP300 has a new braking system including larger front discs and rear wheel drums replaced by discs. Stopping distances are improved and trailer sway assist via the electronic stability control is now standard throughout the range.

A 1,045kg payload (increased now to 1,091kg for some models) is comfortably over the 1tonne VAT bar if not up to Ford Ranger's 1,252kg. But a braked trailer weight maximum of 3.5t (legal limit) throughout is as good as any other best-in-class.

A manual gearbox and mechanical handbrake are key assets for a credible 4x4. Both are here. Electronic support comes via ABL (Active Brake Limited Slip), Hill Start and Descent Assist. Add a mechanical rear "diff lock" (£450 or £500) and the NP300's off-road readiness is evident.



NISSAN NAVARA 2019.

Verdict: More comfortable, refined and steering communicative (not too light). New gearbox and clutch far less tiresome in traffic. Larger engine option would be good with a view to Amarok's all-3.0/V6 range and (Navara-based) Mercedes x350d V6. H/R 4x4 on-road (as L200 with Super Select) would be a major asset - Mitsubishi is now part of the Renault-Nissan Alliance. But the Navara 190 is a responsive, frugal and very capable pick-up usefully enhanced by this 'mid-life' up-grade.

Model Line-Up: King Cab (rear-hinged 'half doors') & Double Cab Visia, £22,150 & £23,000; King Cab & Double Cab Acenta, £23,100 & £23,950 (alloy wheels, auto-emergency braking, electric windows, etc.); D/Cab N-Connecta, £26,875 (Sat Nav, Touchscreen Connectivity, Reversing Camera, etc.); D/Cab Tekna, £28,525 (Surround-View monitor, Heated Front Seats, Roof Rails, etc.); D/Cab N-Guard, £29,525 (18" Alloys, Rear Parking Sensors, Sunroof, Black Bodykit, Steps, etc.)

Facts & Figures: Tekna D/Cab 2.3dCi 190; 6-speed manual (7-speed auto - £1,600); 114mph; 0-62mph 11.2secs; 31.7mpg (WLTP combined); 32mpg on test (Trip Computer); CO2-235g/km; Road Tax £260 (LGV TC39); Ins.Grp.37/38; Warranty & Roadside Assistance - 5yrs/100,000 miles. Prices above exclude VAT.

WALES LONGEST AND LARGEST SUPPLIER OF 4 DOOR PICK-UPS

FAMILY OWNED & RUN FOR OVER 50 YEARS

51 YEARS
1968 - 2019

Geraint Jones
4x4 Ltd.
INDEPENDENT 4X4 DEALER

15 ISUZU DMAX UTAH
BALANCE OF 5 YEAR WARRANTY, ONE OWNER, FULLY LOADED WITH EXTRAS, ONLY 28,000 MILES

67 FORD RANGER
LTD, TDCI AUTOMATIC, ONE OWNER, ONLY 23,500 MILES.

WISHING ALL OUR CUSTOMERS A **Merry Christmas** and a **Happy New Year**

LAND ROVER COMMERCIALS

- 65 DEFENDER 110 XS ONE LOCAL OWNER FROM NEW, ONLY 17,000 MILES, 7 SEATS, MINT CONDITION.
- 64 DEFENDER, 110 COUNTY, TD, D/C, ONE OWNER, NO AGRICULTURAL WORK, ONLY 40K.
- 63 DEFENDER, 90 HARD TOP TD, LOCALLY OWNED MINT CONDITION, 34,000 MILES.
- 13 DEFENDER TRUCK CAB ONLY 25,000 MILES, MINT CONDITION.
- 11 DEFENDER 90 H-TOP X TECH LE TD, ONE OWNER.

LAND ROVER

- 59 RANGE ROVER SP HSE TDV6 AUTO, LOCALLY OWNED.
- 09 RANGE ROVER SPORT, HSE TDV8 AUTO, LOCALLY OWNED, LOW MILES, SERVICE HISTORY, PRIVATE PLATE.
- 57 FREELANDER 2, GS TD4 BLUE, LOCALLY OWNED, SERVICE HISTORY, MINT CONDITION.

COMMERCIALS

- 66 MITSUBISHI SHOGUN, SG2, AUTO, SWB, 1 LOCAL OWNER, 12K MILES.
- 15 MITSUBISHI SHOGUN, SWB, MANUAL IN SILVER, 52,000 MILES.

4 DOOR PICK-UPS WITH VAT @ 20%

- NISSAN NAVARA, NP300'S, AVAILABLE IN VISIA, ACENTA, ACENTA+ AND TEKNA MODELS, SELECTION OF COLOURS, 3.5 TONNE TOWING, 5 YEAR WARRANTY.
- 67 FORD RANGER LTD TDCI, AUTOMATIC, ONE OWNER ONLY 23,500 MILES.
- 16 NISSAN NP300 NAVARA, VISIA, ONLY 15,500 MILES, ONE LOCAL OWNER.
- 15 ISUZU DMAX, UTAH, ONE OWNER, BALANCE OF 5 YEAR WARRANTY, 28,000 MILES.
- 64 VOLKSWAGEN TRENDLINE TDI 4 MOTION DC, MANUAL, SERVICE HISTORY.
- 14 VOLKSWAGEN AMAROK CANYON, A32 SPECIAL EDITION 28,000 MILES, ONE OWNER, SERVICE HISTORY.
- 63 ISUZU DMAX, UTAH, 2.5 AUTO, LOCALLY OWNED.
- 62 SSANGYONG KORANDO, SPORT EX, ONE OWNER + DEMO, SERVICE HISTORY.
- 09 FORD RANGER THUNDER, LOCALLY OWNED, SILVER IN COLOUR.
- 57 MITSUBISHI L200, AUTO, LOCAL IN SILVER.

TOYOTA PICKUPS - SUPPLIED BY US

- 19 HILUX INVINCIBLE 2.4 3.5 TONNE, TOWING CAPACITY, BALANCE OF WARRANTY, OUR DEMO, 1000 MILES, T-BAR, LINER.
- 62 HILUX INVINCIBLE, 3L, LOCALLY OWNED, ONLY 57,000 MILES.
- 62 HILUX INVINCIBLE, 3L, IN BLACK.
- 10 HILUX INVINCIBLE, 3L, IN BLACK, LOCALLY OWNED.

CARS & VANS

- 62 FORD FOCUS, TITANIUM X TDCI, SILVER.
- 10 FORD TRANSIT, CONNECT 75, T200 DIESEL.
- 06 MERCEDES BENZ C-CLASS, ELEGANCE SC, ONE OWNER, ONLY 31,000 MILES.
- 04 AUDI A3, BLACK, LOCAL.

OTHER

- 67 NISSAN X-TRAIL, N-VISION ONLY 9,000 MILES, IMMACULATE.
- 67 DACIA DUSTER LAUREATE DCI, LOCALLY OWNED, 37,000 MILES.
- 16 FIAT PANDA, MULTIJET, 15,800 MILES, SERVICE HISTORY.
- 60 SUZUKI SX4, SZ4, ONE OWNER, SERVICE HISTORY.
- 59 TOYOTA RAV 4 LTD ED, PETROL, LOCALLY OWNED, 63,000 MILES
- 57 JEEP PATRIOT, LOCAL, LOW MILES, BLUE.

FLYING THE SSANGYONG FLAG SINCE 2003

- 66 TIVOLI, ELX 1.6 ONLY 13,000 MILES, WITH SERVICE HISTORY, STILL UNDER MANUFACTURERS WARRANTY, £30 A YEAR TAX.
- 16 KORANDO, ELX 2.2 AUTO, LEATHER, IMMACULATE.
- 15 REXTON ELX AUTO, BLACK, 7 LEATHER SEATS, TOP SPEC, SERVICE HISTORY, ONE LOCAL OWNER + DEMO.
- 14 REXTON W, MANUAL, ONE LOCAL OWNER + DEMO, LOW MILES, SERVICE HISTORY
- 10 REXTON, II 270 SPR AUTO, LOW MILES, ONE LOCAL OWNER+DEMO.
- 07 REXTON RX 270 SE 5, LOCAL SILVER.
- 56 REXTON 270 S, LOCAL, 7 SEATS.

High Noon Garage Whitemill Carmarthen Carm SA32 7EN
OPEN 6 DAYS A WEEK (CLOSED SUNDAYS)
5 MINUTES FROM CARMARTHEN

01267 290 900

www.GERAINTJONES4X4.co.uk

WE OFFER
• SALES • SERVICING • PARTS & ACCESSORIES

SALES TEAM ASK FOR:
Marie, Gavin or Beryl

STORES & SERVICE TEAM ASK FOR:
Gavin or Beryl

NEW KIOTA MECHRON, 4 DOOR & 6 SEATER 4X4 WITH TIPPER, DIESEL, IN STOCK. 2 YEAR WARRANTY ON ALL NEW. NEW KIOTA MECHRON, 2 DOOR.

INDEPENDENT TOYOTA HILUX SPECIALIST

Models portrayed for illustration purposes only. Details correct at time of going to press. All commercials +Vat @20%.

Lodi's *Gems* ...to die for



WYNNSTAY

20% OFF

PROFESSIONAL GEMS
RODENTICIDES

DURING DEC 2019 & JAN 2020

**JADE
Bait**

**SAPPHIRE
Bait**



**SAPPHIRE
Bait**

UK'S STRONGEST RODENT POISON, KILLS IN A SINGLE FEED!

Use biocides safely. Always read the label and product information before use. Follow the CRRU code of practice for effective results and to reduce the risk to non-target animals and birds.
Can only be supplied to professional users holding certification demonstrating compliance with the CRRU UK Rodenticide Stewardship Regime. E&OE

Available from all Wynnstay stores - 20% off during Dec 2019 and Jan 2020